

## Excellent Integrated System Limited

Stocking Distributor

Click to view price, real time Inventory, Delivery & Lifecycle Information:

[Molex Connector Corporation](#)  
[0351500390](#)

For any questions, you can email us directly:

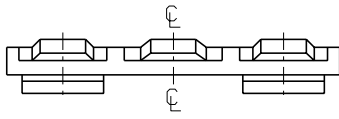
[sales@integrated-circuit.com](mailto:sales@integrated-circuit.com)

ENG. NO. SD 35150-039\*

EDP NO.

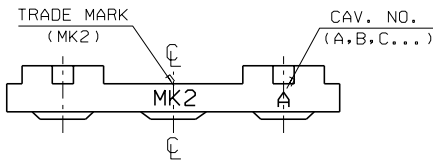
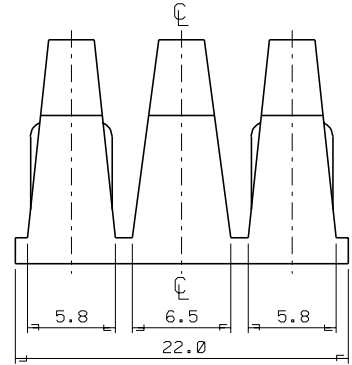
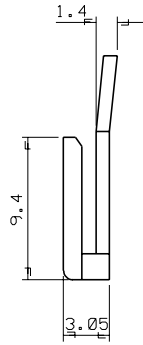
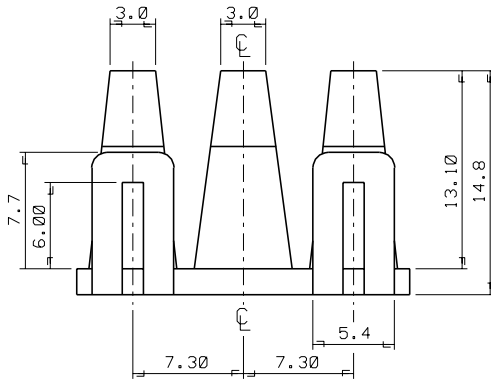
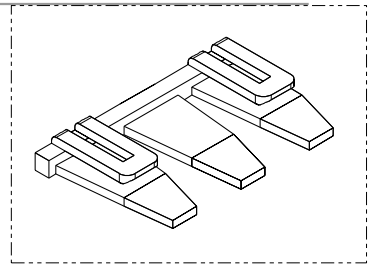
SIMILAR ITEM

PROJECT NO. 070 W/W CONN\*



NOTES

- MATERIAL : NYLON 66 (UL94V-2)
- COLOR : 35150-0390 (NATURAL)  
35150-0392 (RED)  
35150-0393 (YELLOW)  
35150-0394 (BLUE)
- MATCHED HOUSING : 35150-030\*/031\*  
35151-031\*  
35150-060\*/061\*  
35151-061\*



		MATERIAL SEE NOTES		molex MOLEX-KOREA CO.,LTD.	
		GENERAL TOLERANCE DIMENSION : ±0.3 ANGLE : ±1°		DRAWN BY J.S.KANG CHK'D BY	
B	REVISED	95-127	95-11-22	APP'D BY SCALE 4/1	
A	NEW RELEASED	92-9-14		TITLE: 7.3 PITCH W/W CONN* T.P.A - 3P	
LTR	REVISION RECORD	ECN	DATE	SHEET 1 OF 1	
REVISE ONLY ON CAD SYSTEM				REV B	