

## Excellent Integrated System Limited

Stocking Distributor

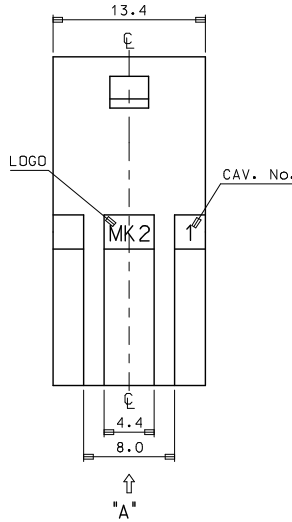
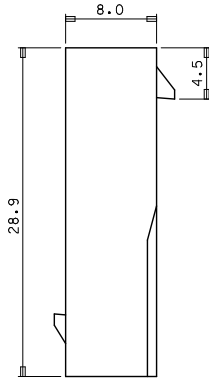
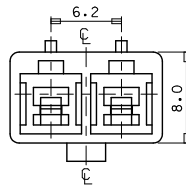
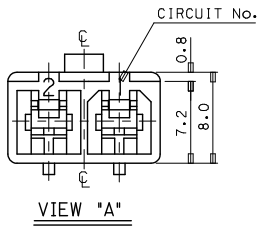
Click to view price, real time Inventory, Delivery & Lifecycle Information:

[Molex Connector Corporation](#)  
[0351500200](#)

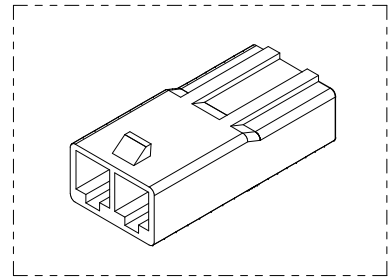
For any questions, you can email us directly:

[sales@integrated-circuit.com](mailto:sales@integrated-circuit.com)

10 9 8 7 6 5 4 3 2 1



- NOTES
1. MATERIAL :SEE TABLE
  2. COLOR :SEE TABLE
  3. MATCHED HOUSING : 35151-021\*  
35150-029\* (TPA)
  4. APPLIED TERMINAL : 35745-0\*10



NO	PRODUCT		MATERIAL	
	PART NO	MATERIAL NO	COLOR	DESCRIPTION
1	35150-0200	351500200	NATURAL	PBT (UL94V-0)
2	35150-0202	351500202	RED	
3	35150-0204	351500204	BLUE	
4	35150-0209	351500209	NATURAL	
5	35150-2209	351502209	RED	PC/PET (UL94V-0)
6	35150-3209	351503209	YELLOW	
7	35150-4209	351504209	BLUE	

REVISED  
EC NO: KOR2009-0026  
DRAWN: HPAK01 2008/08/25  
CHKD: WT YANG 2008/11/25  
APPR: TUNSKK1TH 2008/11/25

QUALITY SYMBOLS  
▽=0  
▽=0

	GENERAL TOLERANCES (UNLESS SPECIFIED)	
	mm	INCH
4 PLACES	± ---	± ---
3 PLACES	± ---	± ---
2 PLACES	± ---	± ---
1 PLACE	± 0.2	± ---
ANGULAR ± 1 °		

DIMENSION STYLE  
MM ONLY

DRAWN BY JS.KANG DATE  
CHECKED BY DATE  
APPROVED BY DATE

MATERIAL NO. SEE TABLE

SIZE A3

SCALE 3:1  
DESIGN UNITS METRIC  
THIRD ANGLE PROJECTION

TITLE  
6.2 PITCH W/W CONN  
MALE HOUSING-2P(W/O EAR)

MOLEX INCORPORATED

DOCUMENT NO. SD-35150-020\*

SHEET NO. 1 OF 01

THIS DRAWING CONTAINS INFORMATION THAT IS PROPRIETARY TO MOLEX INCORPORATED AND SHOULD NOT BE USED WITHOUT WRITTEN PERMISSION

9 8 7 6 5 4 3 2 1