

Excellent Integrated System Limited

Stocking Distributor

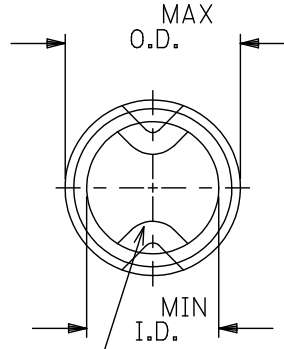
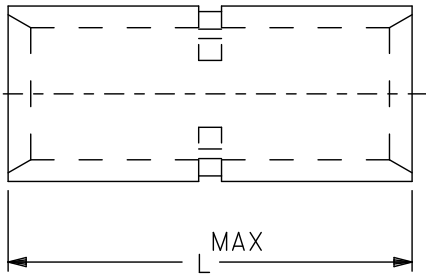
Click to view price, real time Inventory, Delivery & Lifecycle Information:

[Molex Connector Corporation](#)
[0192150046](#)

For any questions, you can email us directly:

sales@integrated-circuit.com

MATERIAL NO.	ENG NO.	WIRE SIZE	I.D. MIN.	O.D. MAX.	"L" MAX.	WIRE STOP QTY.
192150034	D-354	8	.165	.295	.864	ONE
192150040	E-362	6	.230	.374	1.045	ONE
192150045	F-364	4	.277	.457	1.155	ONE
192150046	G-372	2	.357	.538	1.280	ONE
192150047	H-383	1/0	.439	.620	1.440	TWO
192150048	J-388	2/0	.496	.697	1.440	TWO
192050012	K-393	3/0	.554	.760	1.540	TWO
192050013	L-378	4/0	.621	.860	1.540	TWO



WIRE STOP SEE CHART FOR QUANTITY

REDRAWN FROM DOC CD-31003
DRAWN BY RCM 1994/03/17

REDRAWN & RELEASED EC NO: IPG2015-2179 DRAWN: GRO JAS01 2015/06/30 CHKD: JMACNEIL 2015/06/30 APPR: JMACNEIL 2015/07/16 DESCRIPTION REV A	QUALITY SYMBOLS ▽=0 ▽=0	GENERAL TOLERANCES (UNLESS SPECIFIED) <table border="1"> <thead> <tr> <th></th> <th>mm</th> <th>INCH</th> </tr> </thead> <tbody> <tr> <td>4 PLACES</td> <td>± .005</td> <td>± .0005</td> </tr> <tr> <td>3 PLACES</td> <td>± .005</td> <td>± .0005</td> </tr> <tr> <td>2 PLACES</td> <td>± 0.13</td> <td>± .01</td> </tr> <tr> <td>1 PLACE</td> <td>± 0.25</td> <td>± .01</td> </tr> <tr> <td>0 PLACE</td> <td>±</td> <td>±</td> </tr> </tbody> </table> ANGULAR ±1/2° DRAFT WHERE APPLICABLE MUST REMAIN WITHIN DIMENSIONS		mm	INCH	4 PLACES	± .005	± .0005	3 PLACES	± .005	± .0005	2 PLACES	± 0.13	± .01	1 PLACE	± 0.25	± .01	0 PLACE	±	±	DIMENSION STYLE INCH ONLY DRAWN BY GRO JAS01 DATE 2015/06/30 CHECKED BY JMACNEIL DATE 2015/06/30 APPROVED BY JMACNEIL DATE 2015/07/16 MATERIAL NO. SEE CHART	SCALE --- DESIGN UNITS INCH THIRD ANGLE PROJECTION	TITLE VERSAKRIMP BUTT CONNECTORS molex DOCUMENT NO. SD-19215-007 SHEET NO. 1 OF 1
		mm	INCH																				
	4 PLACES	± .005	± .0005																				
	3 PLACES	± .005	± .0005																				
2 PLACES	± 0.13	± .01																					
1 PLACE	± 0.25	± .01																					
0 PLACE	±	±																					
NOTES: 1. MATERIAL: COPPER. 2. FINISH: TIN PLATED. 3. PARTS ARE ROHS COMPLIANT.																							
THIS DRAWING CONTAINS INFORMATION THAT IS PROPRIETARY TO MOLEX INCORPORATED AND SHOULD NOT BE USED WITHOUT WRITTEN PERMISSION																							
SIZE A																							

ib_frame_A_P_ME_T
Rev E1 2012/01/25

5

4

3

2

1