

Excellent Integrated System Limited

Stocking Distributor

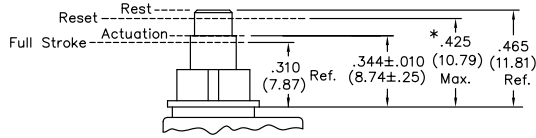
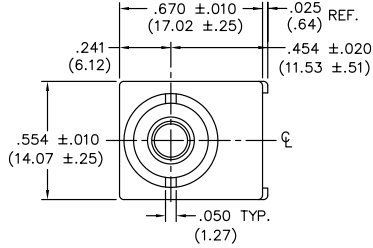
Click to view price, real time Inventory, Delivery & Lifecycle Information:

[CW Industries](#)
[GC-536B-0108](#)

For any questions, you can email us directly:
sales@integrated-circuit.com

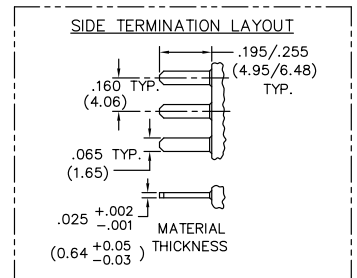
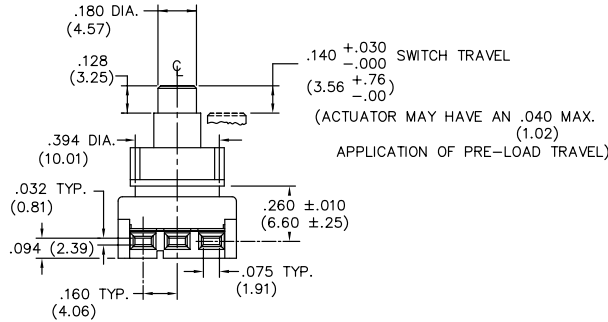
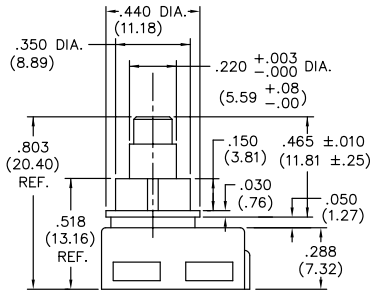
DIMENSIONS IN INCHES (MILLIMETERS)
DO NOT SCALE DRAWING

Dwg. No.
GC-536B-0108



SWITCH TRAVEL SPECIFICATIONS

* Mating Part can Pre-Load Actuator down to .425 (10.79) max..



TERMINATION - Insert male tabs into switch housing using side termination. Refer to side termination layout for dimensions."

1	2	3	4	5	6	7	8	9	10
---	---	---	---	---	---	---	---	---	----

FORM-B3 REVISIONS	
	THIS INFORMATION IS CONFIDENTIAL AND PROPRIETARY TO CW INDUSTRIES INCORPORATED AND ITS AFFILIATES. IT MAY NOT BE DISCLOSED TO ANYONE, OTHER THAN CW INDUSTRIES PERSONNEL, WITHOUT WRITTEN AUTHORIZATION FROM CW INDUSTRIES INCORPORATED, SOUTHAMPTON, PENNSYLVANIA USA.

CW INDUSTRIES Southampton, Pa. 18966 TOLERANCES UNLESS OTHERWISE SPECIFIED 2 Place Decimal ±.010 METRIC 3 Place Decimal ±.005 1 Place Dec. ±.25mm Angles ±1' 2 Place Dec. ±.13mm	Title: SWITCH ASSEMBLY PUSH ON-PUSH OFF S.P.D.T. W/RIBS DAMPER SPRING VERSION
	Made for: CW IND. Division: SWITCH
	Drawn by: DGW 11-17-2010 Checked by: G. Guld 11-18-10 Approval: EJP 11/19/10
	Dwg. No.: GC-536B-0108