



Excellent Integrated System Limited

Stocking Distributor

Click to view price, real time Inventory, Delivery & Lifecycle Information:

[Essentra Components \(formerly Richco, Inc.\)](#)
[SRB-R-5](#)

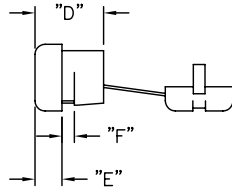
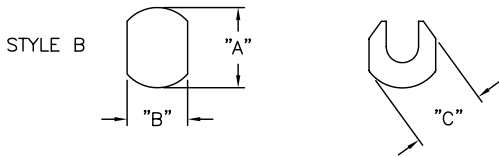
For any questions, you can email us directly:
sales@integrated-circuit.com

PART NO.	WIRES ACCOMMODATED	APPROX. WIRE SIZE	MOUNTING HOLES		C	D	E	F MAX. PANEL THICKNESS
			A	B				
SRB-D-3	SP-1, SPT-1 #18/2	.120 X .220 (3.1 X 5.6)	.437 (11.10)	.395 (10.03)	.460 (11.68)	.410 (10.41)	.160 (4.06)	.062 (1.57)
SRB-F-2	SP-1, SPT-1 #18/2	.11 X .21 (2.8 X 5.3)	.375 (9.53)	.345 (8.76)	.425 (10.80)	.410 (10.41)	.155 (3.94)	.062 (1.57)
	XT (CLOCKWIRE) #18/2	.09 X .18 (2.3 X 4.6)						
SRB-F-4	SP-2, SPT-2 #16/2 HPN #16/2	.161 X .30 (4.1 X 7.6)	.515 (13.08)	.465 (11.81)	.570 (14.98)	.500 (12.70)	.171 (4.34)	.100 (2.54)
	SP-2, SPT-2 #18/2 HPN #18/2	.15 X .28 (3.8 X 7.1)	.500 (12.70)					
SRB-F-5	HPN #16/3	.16 X .37 (4.1 X 9.4)	.562 (14.27)	.530 (13.46)	.610 (15.49)	.600 (15.24)	.240 (6.10)	.130 (3.30)
	SPT-2 #18/3	.15 X .34 (3.8 X 8.6)						
	SPT-3 #16/2	.20 X .37 (5.1 X 9.4)						
SRB-F-7	SPT-3 #18/2	.18 X 3.5 (4.6 X 8.9)	.500 (12.70)	.456 (11.58)	.545 (13.84)	.401 (10.20)	.142 (3.60)	.071 (1.80)
	SPT-1 #18/3	.19 X .30 (3.0 X 7.6)						
	SPT-2 & HPN #18/2	.15 X .28 (3.8 X 7.1)						
SRB-R-5	SPT-2 & HPN #16/2	.16 X .30 (4.1 X 7.6)	.500 (12.70)	.465 (11.81)	.560 (14.22)	.430 (10.92)	.165 (4.19)	.100 (2.54)
	SV, SVT #18/2	.250 (6.43)						
	SV, SVT #18/3	.265 (6.73)						
	HPD #16/2	.290 (7.37)						
SRB-R-6	HPD #18/2	.270 (6.86)	.656 (16.66)	.570 (14.48)	.730 (18.54)	.680 (17.27)	.275 (6.99)	.125 (3.18)
	SJ, SJT, SJO #16/2	.325 (8.26)						
	SJ, SJT, SJO #18/2	.300 (7.62)						
	SJ, SJT, SJO #16/3	.355 (9.02)						
	SJ, SJT, SJO #18/3	.330 (8.38)						

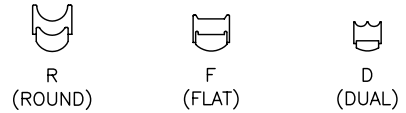
MOUNTING HOLES



BUSHING DIMENSIONS



KEY-CONTOUR STYLE



- NOTES:
 1. MATERIAL: NYLON 6/6 (RMS-01).
 2. COLOR: BLACK.

TITLE: STRAIN RELIEF BUSHINGS				DWG IN IN (MM)	FINAL
TOLERANCES UNLESS NOTED .XX=±.010 .XXX=±.005 FRAC=±1/64 ANG=±1°	FILE # SRB	DWN: R.S.	APP:		
MAT'L: SEE NOTES	RE: RICHCO, INC.	DT: 12-08-93	DT: RICHCO INC. PO BOX 804238, CHICAGO, 60680 (773) 539-4060	PART #	PRINT TYPE
				SEE TABLE	CA

B	REM. "PART STAMPING" COLUMN, CHANGED FILE NO.	SM 01.08.02
A	UL and CSA note removed	JL 12.9.99
REV	DESCRIPTION	ENGR DATE