

## Excellent Integrated System Limited

Stocking Distributor

Click to view price, real time Inventory, Delivery & Lifecycle Information:

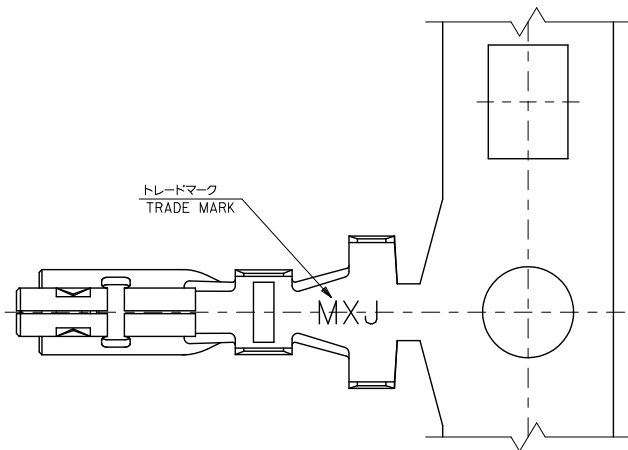
[Molex Connector Corporation](#)

[0561349100](#)

For any questions, you can email us directly:

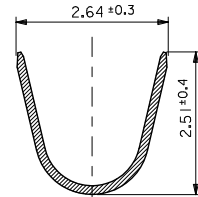
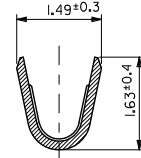
[sales@integrated-circuit.com](mailto:sales@integrated-circuit.com)

10 9 8 7 6 5 4 3 2 1



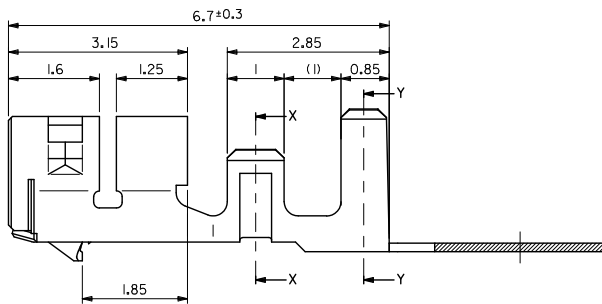
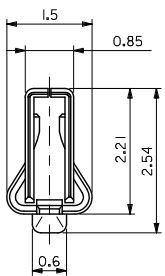
**注記  
NOTES**

1. 使用材料 : 銅合金, 銅メッキ (t=0.15)  
MATERIAL : PRE-TINNED COPPER ALLOY
2. 適合ハウジング : 51242, 51382, 51353シリーズ  
APPLICABLE HOUSING : 51242, 51382, 51353 SERIES
3. ELV及びRoHS適合  
ELV AND RoHS COMPLIANT.



無鉛  
LEAD FREE

56134-9100	バラ状 LOOSE
56134-9000	連続状 CHAIN
MATERIAL NO.	端子形状 FORM



MATERIAL 材料	FINISH 仕上り
注記参照 SEE NOTES	//
WIRE RANGE 適用電線範囲	
AWG#22-#28 : 0.079-0.34mm <sup>2</sup>	
KV0.2-0.4 : 0.2-0.4mm <sup>2</sup>	
INS. RANGE 検査外径	
∅0.9 ~ ∅1.7 mm	

REVISED EC NO. J2011-0960 DRAWN HORI CHIKIDAKAWA APPROX. NIKITA DESCRIPTION 2011/01/20 2011/01/20 2011/01/21	GENERAL TOLERANCES (UNLESS SPECIFIED)
	10 UNDER ± 0.2
	10 OVER 30 UNDER ± 0.25
	30 OVER ± 0.3
	ANGULAR ± 3 °
	DRAFT WHERE APPLICABLE MUST REMAIN WITHIN DIMENSIONS

DIMENSION STYLE MM ONLY	SCALE 15:1	DESIGN UNITS METRIC	THIRD ANGLE PROJECTION
DRAWN BY NITO	DATE 2002/02/28	TITLE 2.0 WIRE TO BOARD CONN. CRIMP RECEPTACLE	
CHECKED BY KASAKAWA	DATE 2003/06/12		
APPROVED BY	DATE		
MATERIAL NO.	DOCUMENT NO.		
SEE CHART			

MOLEX INCORPORATED		SHEET NO. 1 OF 1
SD-56134-005		
THIS DRAWING CONTAINS INFORMATION THAT IS PROPRIETARY TO MOLEX INCORPORATED AND SHOULD NOT BE USED WITHOUT WRITTEN PERMISSION		