

Excellent Integrated System Limited

Stocking Distributor

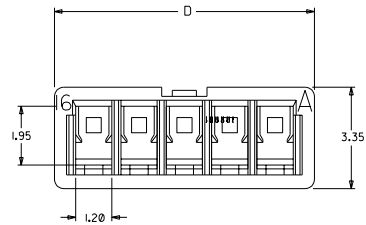
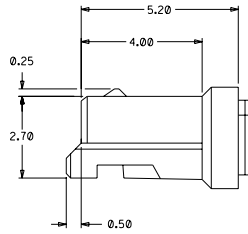
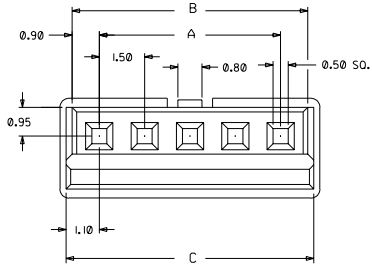
Click to view price, real time Inventory, Delivery & Lifecycle Information:

[Molex Connector Corporation](#)
[0874390501](#)

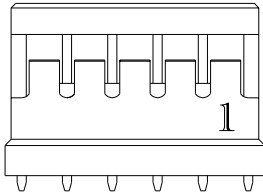
For any questions, you can email us directly:

sales@integrated-circuit.com

PART NO.	NO. OF CRT'S	A	B	C	D
87439-0201	2	1.50	3.30	3.70	4.10
87439-0301	3	3.00	4.80	5.20	5.60
87439-0401	4	4.50	6.30	6.70	7.10
87439-0501	5	6.00	7.80	8.20	8.60
87439-0601	6	7.50	9.30	9.70	10.10
87439-0701	7	9.00	10.80	11.20	11.60
87439-0801	8	10.50	12.30	12.70	13.10
87439-0901	9	12.00	13.80	14.20	14.60
87439-1001	10	13.50	15.30	15.70	16.10
87439-1101	11	15.00	16.80	17.20	17.60
87439-1201	12	16.50	18.30	18.70	19.10
87439-1301	13	18.00	19.80	20.20	20.60
87439-1401	14	19.50	21.30	21.70	22.10
87439-1501	15	21.00	22.80	23.20	23.60



NOTE:
1. MATERIAL:
NYLON 66, 94V-0, COLOR: BLACK
2. HOUSING TO ACCEPT MOLEX P/N 87421-0000



REL PER PDR# S-0000348-0498 EC NO. S2003-0498 DRWN: KSEE CHR: KCLING APPR: SKTOH 030415 030526 030526	QUALITY SYMBOLS MAJOR CRITICAL DESCRIPTION	GENERAL TOLERANCES: (UNLESS SPECIFIED)		SCALE NTS	DESIGN UNITS <input checked="" type="checkbox"/> mm <input type="checkbox"/> INCH	THIRD ANGLE PROJECTION	DIMENSIONS: <input type="checkbox"/> mm <input type="checkbox"/> INCH	SHT REV			
		DRAWN BY & DATE KSEE 030415	TITLE: 1.50 mm PITCH, HOUSING, RECEPTACLE			MOLEX INCORPORATED		MATERIAL NO. SEE TABLE	DRAWING NO. SD-87439-001	SHEET NO. 1 OF 1	
		CHECKED BY & DATE KCLING 030526	APPROVED BY & DATE SKTOH 030526	CAD FILENAME -	THIS DRAWING CONTAINS INFORMATION THAT IS PROPRIETARY TO MOLEX INCORPORATED AND SHOULD NOT BE USED WITHOUT WRITTEN PERMISSION.						SIZE A3
		TOLERANCES: 4 PLACES ±0. - ±. - 3 PLACES ±0. - ±. - 2 PLACES ±0.20 ±. - 1 PLACE ±0. - ±. - ANGULAR: ± 3 °	REV A								