

Excellent Integrated System Limited

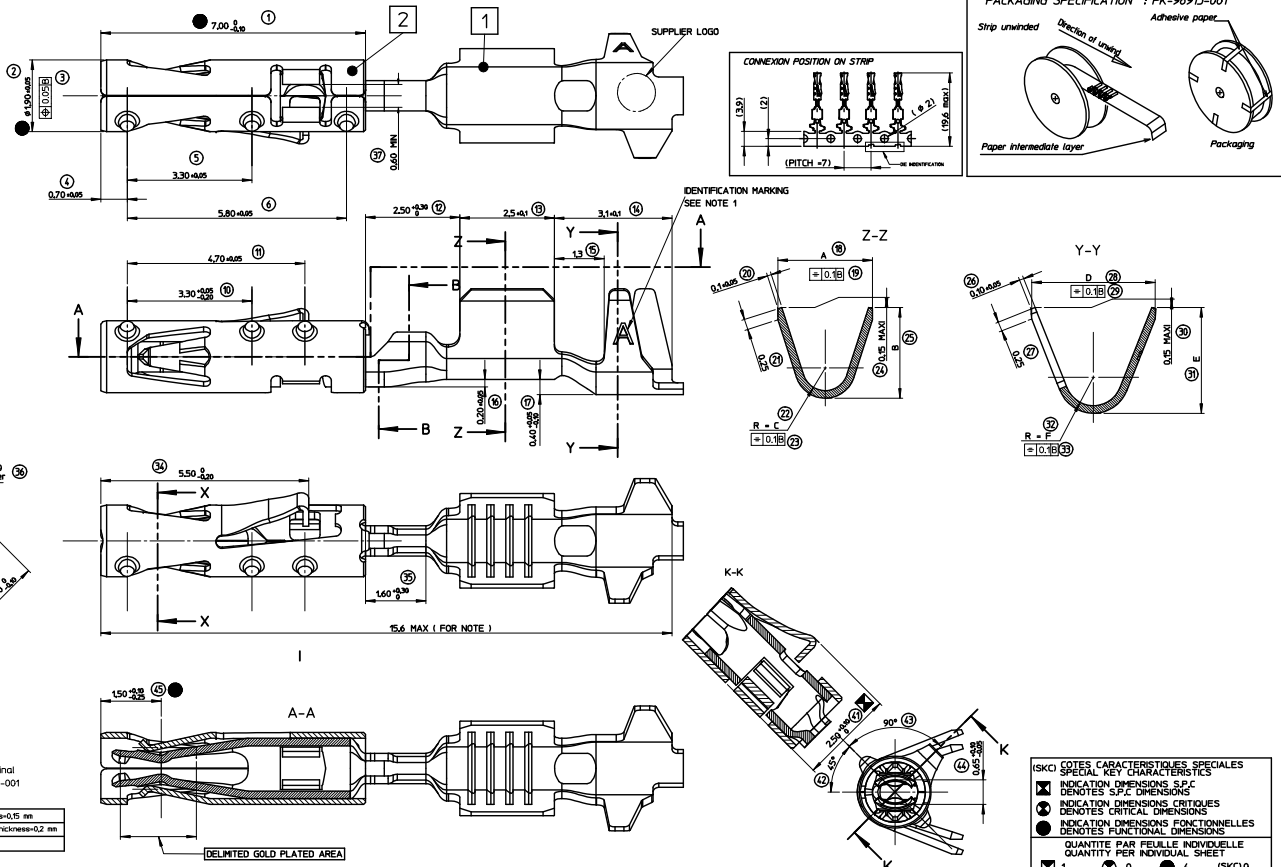
Stocking Distributor

Click to view price, real time Inventory, Delivery & Lifecycle Information:

[Molex Connector Corporation](#)
[0643221029](#)

For any questions, you can email us directly:

sales@integrated-circuit.com



NOTE :
- MARKING 'A' is used to identify 'STANDARD' terminal
- CRIMPING SPECIFICATION ACCORDING TO AS-64322-001

2	BOX TERMINAL	STAINLESS STEEL thickness=0.15 mm
1	BODY TERMINAL	high conductivity copper alloy thickness=0.2 mm
MARK	DESIGNATION	MATERIAL

0643221029	Sn	Sn	Ni	0.75	2.5	2.4	0.6	3.3	2.8	0.75	0.119
0643221219	Au 127μ MINI	Sn	Ni	0.50	2.3	2.2	0.6	3.1	2.6	0.75	0.117
0643221239	Au 127μ MINI	Sn	Ni	0.22 TO 0.44	2.0	1.7	0.6	3.1	2.6	0.75	0.112
0643221019	Sn										
0643221229	Au 127μ MINI	Sn	Ni								
PART NUMBER	CONTACT AREA	CRIMPING AREA	UNDERLAYER	CRIMPING RANGE (mm2)	A±0.2	B±0.2	rC +0.15 -0.1	D±0.2	E±0.2	rF±0.1	WEIGHT (g)

(SKCI) COTES CARACTERISTIQUES SPECIALES
SPECIAL KEY CHARACTERISTICS
INDICATION DIMENSIONS S.P.C. DIMENSIONS
INDICATION DIMENSIONS CRITIQUE
DENOTES FUNCTIONAL DIMENSIONS
QUANTITE PAR FEUILLE INDIVIDUELLE
QUANTITY PER INDIVIDUAL SHEET
1 0 4 (SKCI) 0

UPDATED VIEWS REC NO. 0643221029-0160 DRAWN: SMITH 2013/07/31 CHKD: FERRELLIN 2013/08/20 APPROVED:	GENERAL TOLERANCES (UNLESS SPECIFIED)	mm	INCH	DRAWN BY	DATE	SCALE	DESIGN UNITS	FIRST ANGLE PROJECTION
	4 PLACES	±---	±---	FPAROLARI	2007/09/17	20:1	METRIC	CP RCPT TRM 0.6
	3 PLACES	±---	±---	CHECKED BY	DATE			
	2 PLACES	± 0.10	±---	JDUCLIOS	2007/09/17			
	1 PLACE	± 0.1	±---	APPROVED BY	DATE			
	0 PLACE	± 0.1	±---	STICKEIR	2007/09/17			
	ANGULAR	± 2°		MATERIAL NO.				
	DRAFT WHERE APPLICABLE			SEE CHART				
	SIZE			THIS DRAWING CONTAINS INFORMATION THAT IS PROPRIETARY TO MOLEX INCORPORATED AND SHOULD NOT BE USED WITHOUT WRITTEN PERMISSION				