

Excellent Integrated System Limited

Stocking Distributor

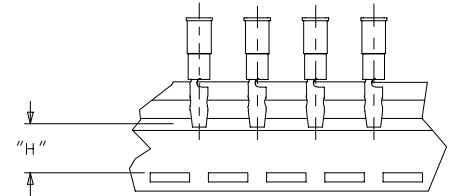
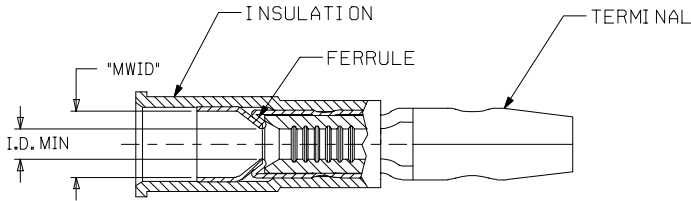
Click to view price, real time Inventory, Delivery & Lifecycle Information:

[Molex Connector Corporation](#)
[0190350004](#)

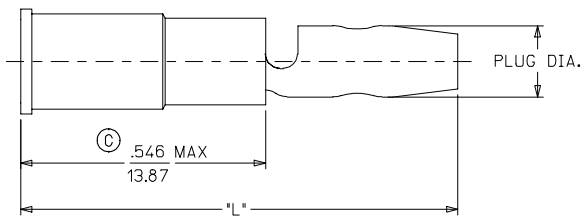
For any questions, you can email us directly:

sales@integrated-circuit.com

LOOSE PIECE		TAPE MOUNTED		WIRE RANGE	INSULATION	I.D. MIN.	PLUG	MAX	*MWID*	"H"
MATERIAL NO.	ENG. NO.	MATERIAL NO.	ENG. NO.	AWG	COLOR		DIA.	"L"		±.010/0.25
190350001	A-559	190350002	A-559T	18-22	RED	.056/1.42	.180/4.57	1.046/26.57	.140/3.56	.495/12.57
190350003	A-569	190350004	A-569T	18-22	RED	.056/1.42	.156/3.96	.986/25.04	.140/3.56	.555/14.10
190350005	B-579	190350008	B-579T	14-16	BLUE	.084/2.13	.180/4.57	1.046/26.57	.170/4.32	.495/12.57
190350009	B-589	190350012	B-589T	14-16	BLUE	.084/2.13	.156/3.96	.986/25.04	.170/4.32	.555/14.10



TAPE MOUNTING DETAIL



SALES DRAWING

NOTE:

1. TERMINAL: MATERIAL COPPER .032 MAX FINISH: ELECTRO-TIN.
FERRULE : MATERIAL: BRASS FINISH: ELECTRO-TIN.
INSULATION: NYLON.
2. MWID = MAXIMUM WIRE INSULATION DIAMETER.
3. ASSEMBLY IS ROHS COMPLIANT.

CORRECTED DIM. & ADDED ROHS EC NO: ETC2007-0397 DRAWNSHILLE 2007/02/17 CHYKD-JIMACNEIL 2007/05/09 APPR: JIMACNEIL 2007/05/10	QUALITY SYMBOLS ▽=0 ▽=0	GENERAL TOLERANCES (UNLESS SPECIFIED)		DIMENSION STYLE IN/MM		SCALE ---	DESIGN UNITS INCH	THIRD ANGLE PROJECTION		
		4 PLACES ± --- ± ---	3 PLACES ± --- ± .005	2 PLACES ± 0.13 ± .01	1 PLACE ± 0.25 ± ---	ANGULAR ±1/2°	DRAWN BY BRE	DATE 2003/02/13	TITLE MALE BULLET SNAP PLUG, MOLDED, AVIKRIMP	
		DRAFT WHERE APPLICABLE MUST REMAIN WITHIN DIMENSIONS		SEE CHART		APPROVED BY RWD		DATE 2003/02/13	MATERIAL NO. SD-19035-001	SHEET NO. 1 OF 1
		THIS DRAWING CONTAINS INFORMATION THAT IS PROPRIETARY TO MOLEX INCORPORATED AND SHOULD NOT BE USED WITHOUT WRITTEN PERMISSION								