



Distributor of Molex Connector Corporation: Excellent Integrated System Limited
Datasheet of 0836119016 - D-Sub Connector Plug, Male Pins 9 Position Panel Mount, Through Hole, Right Angle Solder

Contact us: sales@integrated-circuit.com Website: www.integrated-circuit.com

Excellent Integrated System Limited

Stocking Distributor

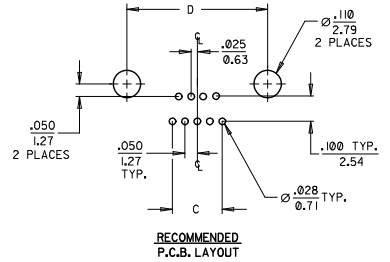
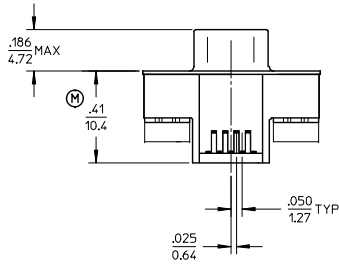
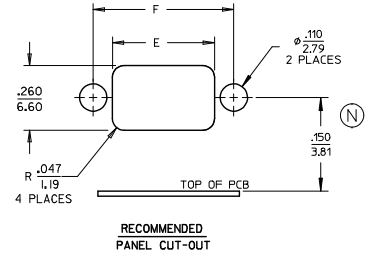
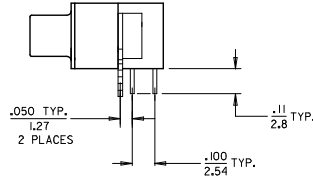
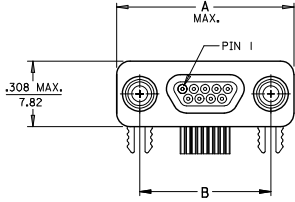
Click to view price, real time Inventory, Delivery & Lifecycle Information:

[Molex Connector Corporation](#)
[0836119016](#)

For any questions, you can email us directly:
sales@integrated-circuit.com

Contact us: sales@integrated-circuit.com Website: www.integrated-circuit.com

MATERIAL NO.	ENG. NO.	SIZE	A MAX.	B	C	D	E	F
836119016	83611-9016	9	.783/19.93	.565/14.35	.200/5.08	.565/14.35	.410/10.41	.565/14.35
836129022	83612-9022	15	.933/23.75	.715/18.16	.350/8.88	.715/18.16	.560/14.22	.715/18.16
836149014	83614-9014	25	1.185/30.10	.965/24.51	.600/15.23	.965/24.51	.810/20.57	.965/24.51



SALES DRAWING

SIZE 9 SHOWN

3. PART IS RoHS COMPLIANT
 2. MARKING: NONE.
 1. REFER TO PS-83421-9000 FOR PRODUCT SPECIFICATION.
 NOTES: UNLESS OTHERWISE SPECIFIED.

ADD DIM. EC NO: ICG2014-1165 DRAWN BY: DRWINBARDEN CHKD: CHKD: APPR: APPR: 2013/12/30	QUALITY SYMBOLS ▽=0 ▽=0	GENERAL TOLERANCES (UNLESS SPECIFIED)		DIMENSION STYLE		SCALE	DESIGN UNITS	THIRD ANGLE PROJECTION
				IN/MM			INCH	
		4 PLACES ±	---	---	---	DRAWN BY	DATE	TITLE
		3 PLACES ±	---	---	---	CHECKED BY	DATE	CONNECTOR SUB-ASSEMBLY RIGHT ANGLE PLUG WITHOUT JACKPOSTS SIZE 9-15-25
2 PLACES ±	0.25	±	.01	RDEROSS	06/04/17	Molex	MOLEX INCORPORATED	
1 PLACE ±	0.25	±	---	APPROVED BY	DATE			
ANGULAR ±		1/2°	---	RDEROSS	06/04/17			
DRAFT WHERE APPLICABLE MUST REMAIN WITHIN DIMENSIONS		MATERIAL NO.		DOCUMENT NO.		SHEET NO.		
		SEE CHART		SD-83611-002		1 OF 1		
		THIS DRAWING CONTAINS INFORMATION THAT IS PROPRIETARY TO MOLEX INCORPORATED AND SHOULD NOT BE USED WITHOUT WRITTEN PERMISSION						