

Excellent Integrated System Limited

Stocking Distributor

Click to view price, real time Inventory, Delivery & Lifecycle Information:

[Molex Connector Corporation](#)
[71251-0013](#)

For any questions, you can email us directly:

sales@integrated-circuit.com

NOTES:

- CARD SLOT ACCEPTS .050±.004 (1.27±0.10) MODULE THICKNESS. (MEASURED OVER P.C. PADS).
- ALL PEGS ARE INTERFERENCE FITS TO PCB UNLESS NOTED ON THE DWG.
- REFER TO PRODUCT SPEC PS-71243-9999 FOR PERFORMANCE SPECIFICATIONS.
- PRODUCT IS PACKAGED IN TRAYS.
- RECOMMENDED MODULE LAYOUT SHALL BE PER JEDEC MO-161.
- RECOMMENDED PLATING ON MODULE PADS: 30 MICROINCH/(0.76 MICROMETER) MINIMUM HARD GOLD (Au) OVER 79 MICROINCH/(2.0 MICROMETER) MINIMUM NICKEL (Ni).
- SEE CHART FOR HOLE SIZE AND PRESENCE AND PLATING OPTION.
- PRODUCT WILL HAVE DATE CODE STAMPED ON SIDE OF HOUSING.

MATERIALS:

HOUSING - GLASS FILLED LIQUID CRYSTAL POLYMER (LCP), UL 94V-0, COLOR: BLACK.
TERMINAL - PHOSPHOR BRONZE
LATCHES - GLASS FILLED HIGH TEMPERATURE NYLON, UL 94V-0, COLOR: IVORY.

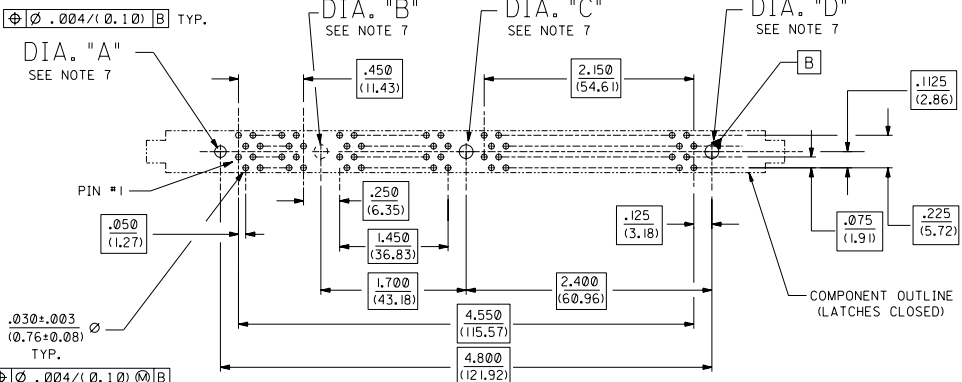
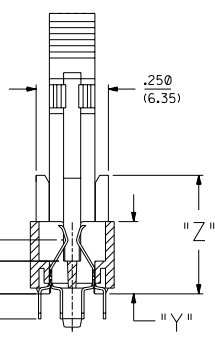
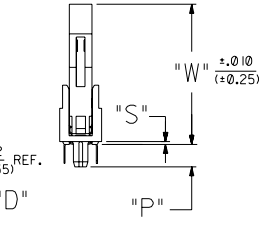
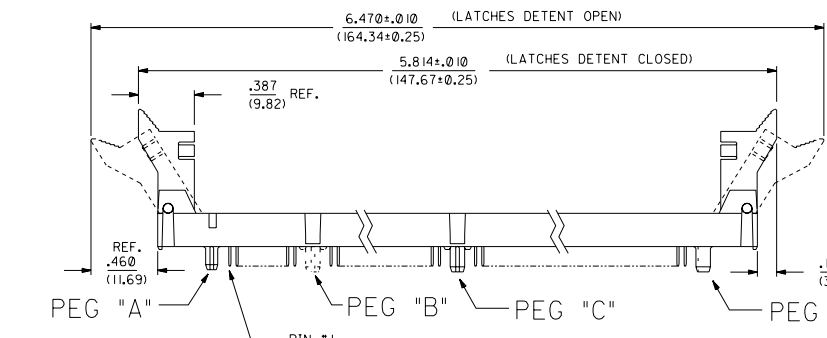
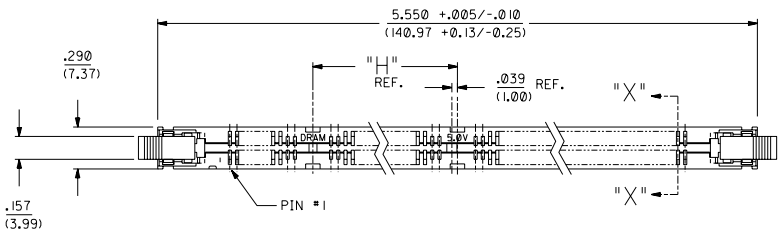
PLATING:

CONTACT AREA: OPTION A: GOLD (Au) FLASH; THICKNESS=2-10 MICROINCH/(0.05-0.25 (0.05-0.25 MICROMETER), OVER PALLADIUM-NICKEL (Pd-Ni); THICKNESS=30 MICROINCH/(0.76 MICROMETER) MINIMUM.
OPTION B: GOLD (Au) FLASH; THICKNESS=2-10 MICROINCH/(0.05-0.25 MICROMETER), OVER PALLADIUM-NICKEL (Pd-Ni); THICKNESS=20 MICROINCH/(0.51 MICROMETER) MINIMUM.

SOLDER TAILS: TIN (Sn); THICKNESS=150 MICROINCH/(3.81 MICROMETER) MINIMUM.
UNDERPLATE: NICKEL (Ni) OVER ENTIRE CONTACT.

NOTE FOR LEAD FREE CONVERSION:

THE PRIMARY SHIPPING CARTON WILL BE LABELED "COMPLIANT TO ROHS DIRECTIVE 2002/95/EC AND ELV ANNEX II OF DIRECTIVE 2000/53/EC". CARTONS WITHOUT THIS LABEL MAY CONTAIN PRODUCT WITH LEAD.



RECOMMENDED P.C. BOARD HOLE PATTERN (CONNECTOR SIDE)



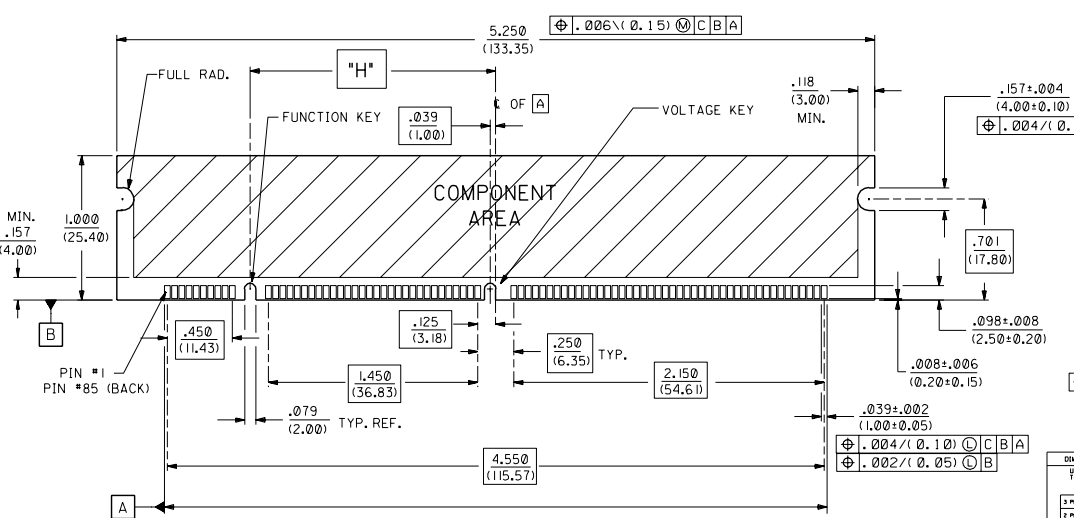
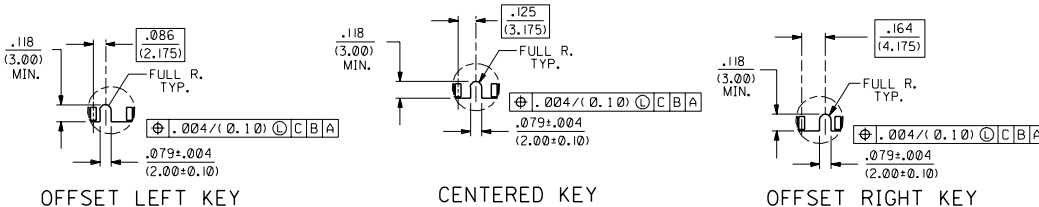
| DIMENSIONS SHOWN (METRIC) INCH | | TITLE | |
|--|-----|--|----|
| 1 | 2 | 3 | 4 |
| ± PLATE ± .005 | --- | 3 | H |
| ± PLATE ± .013 | --- | 2 | F3 |
| ± PLATE ± 0.25 | --- | 1 | HI |
| DRAFT WHEN AVAILABLE MUST REMAIN WITHIN DIMENSIONS | | REVISE ONLY ON CAD SYSTEM | |
| DWG. DCB CHK'D. DCB | | PART NO. DATE | |
| APP'D. DCB SCALE 2:1 | | FILE NAME | |
| | | MOLEX INCORPORATED | |
| | | SEE CHART SDA-71251-0 *** | |
| | | MOLT. INC. AND SHOULD NOT BE USED WITHOUT WRITTEN PERMISSION. CP | |

| REV. | DATE | DESCRIPTION |
|------|------------|--|
| H1 | 04/03/09 | ADD LEAD FREE NOTE ECN# U02004-1732 DMORGAN 04/03/09 |
| H | 08/05/19 | RELEASE - 0027 ECN# U02000-151 DMORGAN 08/05/19 |
| H | 08/05/19 | RELEASE - 0027 ECN# U02000-151 DMORGAN 08/05/19 |
| G | 08/08/09 | CHG. Sn-Pb THICKNESS ECN# U01893-0454 DMORGAN 08/08/09 |
| F3 | 08/08/09 | REVISED PER ECN# U08435 97-8-8 LAURX |
| F2 | 07/16/97 | REVISED PER ECN# U07162 97-4-15 LAURX |
| F1 | 10-9 LAURX | REVISED PER ECN# U070367 96-10-9 LAURX |
| F | 08/13/96 | REVISED PER ECN# U061133 96-9-25 LAURX |
| E1 | 06/08/96 | REVISED PER ECN# U060836 1-19-96 JCL |
| E | 06/08/96 | REVISED PER ECN# U060822 1-19-96 JCL |
| D2 | 10-95 JCL | REVISED PER ECN# U060452 10-10-95 JCL |
| D1 | 06/03/91 | REVISED PER ECN# U060361 9-18-95 JCL |
| D | 05/28/88 | REVISED PER ECN# U05288 8-4-95 JCL |

| PART NUMBER | COLOR | DESCRIPTION | FUNCTION KEY | VOLTAGE KEY | DIA. "A" | DIA. "B" | DIA. "C" | DIA. "D" | DIM. "H" | DIM. "P" | DIM. "S" | DIM. "T" | DIM. "W" | DIM. "X" | DIM. "Y" | DIM. "Z" | CONTACT AREA PLATING |
|-------------|-------|----------------------|--------------|-------------|--------------------------|----------|--|--|------------------|----------------|----------------|----------------|-----------------|----------------|----------------|-----------------|----------------------|
| 71251-0001 | BLACK | 3.3 VOLT STD DRAM | CENTER | CENTER | .080±.002 (2.03±0.05) | NONE | .093 +.003/-0.000 (2.36+0.08/-0.00) | .093 +.003/-0.000 (2.36+0.08/-0.00) | 1.700 (43.18) | .155 (3.94) | .020 (0.51) | .127 (3.23) | .970 (24.64) | .113 (2.87) | .250 (6.35) | .410 (10.41) | OPTION A |
| 71251-0004 | BLACK | 5.0 VOLT STD DRAM | CENTER | OFFSET LEFT | .080±.002 (2.03±0.05) | NONE | .093 +.003/-0.000 (2.36+0.08/-0.00) | .093 +.003/-0.000 (2.36+0.08/-0.00) | 1.700 (43.18) | .155 (3.94) | .020 (0.51) | .127 (3.23) | .970 (24.64) | .113 (2.87) | .250 (6.35) | .410 (10.41) | OPTION A |
| 71251-0012 | BLACK | 3.3 VOLT UNBUFFERED | OFFSET RIGHT | CENTER | .080±.002 (2.03±0.05) | NONE | .093 +.003/-0.000 (2.36+0.08/-0.00) | .093 +.003/-0.000 (2.36+0.08/-0.00) | 1.661 (42.19) | .155 (3.94) | .020 (0.51) | .127 (3.23) | .970 (24.64) | .113 (2.87) | .250 (6.35) | .410 (10.41) | OPTION A |
| 71251-0013 | BLACK | 5.0 VOLT UNBUFFERED | OFFSET RIGHT | OFFSET LEFT | .080±.002 (2.03±0.05) | NONE | .093 +.003/-0.000 (2.36+0.08/-0.00) | .093 +.003/-0.000 (2.36+0.08/-0.00) | 1.661 (42.19) | .155 (3.94) | .020 (0.51) | .127 (3.23) | .970 (24.64) | .113 (2.87) | .250 (6.35) | .410 (10.41) | OPTION A |
| 71251-0016 | BLACK | 3.3 VOLT SYNCHRONOUS | OFFSET LEFT | CENTER | .080±.002 (2.03±0.05) | NONE | .093 +.003/-0.000 (2.36+0.08/-0.00) | .093 +.003/-0.000 (2.36+0.08/-0.00) | 1.739 (44.17) | .155 (3.94) | .020 (0.51) | .127 (3.23) | .970 (24.64) | .113 (2.87) | .250 (6.35) | .410 (10.41) | OPTION A |
| 71251-0017 | BLACK | 5.0 VOLT SYNCHRONOUS | OFFSET LEFT | OFFSET LEFT | .080±.002 (2.03±0.05) | NONE | .093 +.003/-0.000 (2.36+0.08/-0.00) | .093 +.003/-0.000 (2.36+0.08/-0.00) | 1.739 (44.17) | .155 (3.94) | .020 (0.51) | .127 (3.23) | .970 (24.64) | .113 (2.87) | .250 (6.35) | .410 (10.41) | OPTION A |

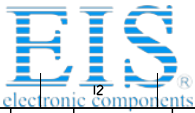
NOTES:

- STRAIGHTNESS OF MODULE APPLIES TO THE AREA FROM THE BOTTOM OF THE CARD UP .157/(4.00).
- IF THE BARS ARE ATTACHED TO PADS, THE TIE BAR SHOULD BE ON AN INTERNAL LAYER, SO THAT THE REMNANT CANNOT CAUSE DAMAGE TO THE CONTACTS.



| | |
|----|-------------|
| F3 | SEE SHEET I |
| F2 | SEE SHEET I |
| F1 | SEE SHEET I |
| F | SEE SHEET I |
| E1 | SEE SHEET I |
| E | SEE SHEET I |
| D2 | SEE SHEET I |
| D1 | SEE SHEET I |
| D | SEE SHEET I |
| C | SEE SHEET I |
| B1 | SEE SHEET I |
| B | SEE SHEET I |
| A | SEE SHEET I |

| | | | |
|---|--------|-----------------------------|--|
| DIMENSIONS SHOWN (METRIC) INCH | | REVISE ONLY ON CAD SYSTEM | |
| UNLESS OTHERWISE SPECIFIED TOLERANCES ARE: ± 1/2° | | TITLE | |
| 3 PLACE ± .005 | --- | .050/(1.27) PITCH MULTI-KEY | |
| 2 PLACE ± .01 | ± 0.13 | 168 CKT DIMM RAM ASSY | |
| 1 PLACE --- | ± 0.25 | 17.8mm LATCH SALES DWG. | |
| DRAFT WHEN APPLICABLE MUST REMAIN WITHIN DIMENSIONS | | MOLEX INCORPORATED | |
| DRG. NO. DCB | | PART NO. SDA-71251-0000 | |
| APP'D. DCB | | DATE 10/10/94 | |
| SCALE 2:1 | | SHEET 2 OF 2 | |



Distributor of Molex Connector Corporation: Excellent Integrated System Limited

Datasheet of 71251-0013 - CONN SOCKET DIMM UNBUFFERED 5.0V

Contact us: sales@integrated-circuit.com Website: www.integrated-circuit.com

| PART NUMBER | COLOR | DESCRIPTION | FUNCTION KEY | VOLTAGE KEY | DIA. 'A' | DIA. 'B' | DIA. 'C' | DIA. 'D' | DIM. 'H' | DIM. 'P' | DIM. 'S' | DIM. 'T' | DIM. 'W' | DIM. 'X' | DIM. 'Y' | DIM. 'Z' | CONTACT AREA PLATING |
|-------------|-------|----------------------|--------------|-------------|--|--|--|--|------------------|----------------|----------------|----------------|-----------------|----------------|----------------|-----------------|----------------------|
| 71251-0001 | BLACK | 3.3 VOLT STD DRAM | SEE SHEET 2 | | | | | | | | | | | | | | OPTION A |
| 71251-0002 | BLACK | 3.3 VOLT STD DRAM | CENTER | CENTER | NONE | .093 +.003/-0.000 (2.36+0.08/-0.00) | .093 +.003/-0.000 (2.36+0.08/-0.00) | NONE | 1.700 (43.18) | .155 (3.94) | .020 (0.51) | .127 (3.23) | .970 (24.64) | .113 (2.87) | .250 (6.35) | .410 (10.41) | OPTION A |
| 71251-0003 | BLACK | 5.0 VOLT STD DRAM | CENTER | OFFSET LEFT | NONE | .093 +.003/-0.000 (2.36+0.08/-0.00) | .093 +.003/-0.000 (2.36+0.08/-0.00) | NONE | 1.700 (43.18) | .155 (3.94) | .020 (0.51) | .127 (3.23) | .970 (24.64) | .113 (2.87) | .250 (6.35) | .410 (10.41) | OPTION A |
| 71251-0004 | BLACK | 5.0 VOLT STD DRAM | SEE SHEET 2 | | | | | | | | | | | | | | OPTION A |
| 71251-0005 | BLACK | 5.0 VOLT UNBUFFERED | OFFSET RIGHT | OFFSET LEFT | .080±.002 (2.03±0.05) | NONE | NONE | .080±.002 (2.03±0.05) | 1.661 (42.19) | .125 (3.18) | .035 (0.89) | .102 (2.59) | .985 (25.02) | .128 (3.25) | .265 (6.73) | .425 (10.79) | OPTION A |
| 71251-0006 | BLACK | 5.0 VOLT STD DRAM | CENTER | OFFSET LEFT | .080±.002 (2.03±0.05) | NONE | .093 +.003/-0.000 (2.36+0.08/-0.00) | .080±.002 (2.03±0.05) | 1.700 (43.18) | .155 (3.94) | .020 (0.51) | .127 (3.23) | .970 (24.64) | .113 (2.87) | .250 (6.35) | .410 (10.41) | OPTION A |
| 71251-0007 | BLACK | 3.3 VOLT STD DRAM | CENTER | CENTER | .080±.002 (2.03±0.05) | NONE | .080±.002 (2.03±0.05) | .080±.002 (2.03±0.05) | 1.700 (43.18) | .140 (3.56) | .020 (0.51) | .127 (3.23) | .970 (24.64) | .113 (2.87) | .250 (6.35) | .410 (10.41) | OPTION A |
| 71251-0008 | BLACK | 5.0 VOLT STD DRAM | CENTER | OFFSET LEFT | NONE | .093 +.003/-0.000 (2.36+0.08/-0.00) | .093 +.003/-0.000 (2.36+0.08/-0.00) | .093 +.003/-0.000 (2.36+0.08/-0.00) | 1.700 (43.18) | .155 (3.94) | .020 (0.51) | .127 (3.23) | .970 (24.64) | .113 (2.87) | .250 (6.35) | .410 (10.41) | OPTION A |
| 71251-0009 | BLACK | 5.0 VOLT STD DRAM | CENTER | OFFSET LEFT | .080±.002 (2.03±0.05) | NONE | NONE | .080±.002 (2.03±0.05) | 1.700 (43.18) | .125 (3.18) | .035 (0.89) | .102 (2.59) | .985 (25.02) | .128 (3.25) | .265 (6.73) | .425 (10.79) | OPTION A |
| 71251-0010 | BEIGE | 3.3 VOLT STD DRAM | CENTER | CENTER | .080±.002 (2.03±0.05) | NONE | NONE | .080±.002 (2.03±0.05) | 1.700 (43.18) | .125 (3.18) | .035 (0.89) | .102 (2.59) | .985 (25.02) | .128 (3.25) | .265 (6.73) | .425 (10.79) | OPTION A |
| 71251-0011 | BLACK | 3.3 VOLT STD DRAM | CENTER | CENTER | .093 +.003/-0.000 (2.36+0.08/-0.00) | NONE | .093 +.003/-0.000 (2.36+0.08/-0.00) | .093 +.003/-0.000 (2.36+0.08/-0.00) | 1.700 (43.18) | .155 (3.94) | .020 (0.51) | .127 (3.23) | .970 (24.64) | .113 (2.87) | .250 (6.35) | .410 (10.41) | OPTION A |
| 71251-0012 | BLACK | 3.3 VOLT UNBUFFERED | SEE SHEET 2 | | | | | | | | | | | | | | OPTION A |
| 71251-0013 | BLACK | 5.0 VOLT UNBUFFERED | SEE SHEET 2 | | | | | | | | | | | | | | OPTION A |
| 71251-0014 | BLACK | 3.3 VOLT UNBUFFERED | OFFSET RIGHT | CENTER | .080±.002 (2.03±0.05) | NONE | NONE | .080±.002 (2.03±0.05) | 1.661 (42.19) | .125 (3.18) | .035 (0.89) | .112 (2.84) | .985 (25.02) | .128 (3.25) | .265 (6.73) | .425 (10.79) | OPTION A |
| 71251-0015 | BLACK | 3.3 VOLT STD DRAM | CENTER | CENTER | .080±.002 (2.03±0.05) | NONE | .093 +.003/-0.000 (2.36+0.08/-0.00) | .093 +.003/-0.000 (2.36+0.08/-0.00) | 1.700 (43.18) | .155 (3.94) | .020 (0.51) | .117 (2.97) | .970 (24.64) | .113 (2.87) | .250 (6.35) | .410 (10.41) | OPTION A |
| 71251-0016 | BLACK | 3.3 VOLT SYNCHRONOUS | SEE SHEET 2 | | | | | | | | | | | | | | OPTION A |
| 71251-0017 | BLACK | 5.0 VOLT SYNCHRONOUS | SEE SHEET 2 | | | | | | | | | | | | | | OPTION A |
| 71251-0018 | BLACK | 3.3 VOLT UNBUFFERED | OFFSET RIGHT | CENTER | .093 +.003/-0.000 (2.36+0.08/-0.00) | NONE | .093 +.003/-0.000 (2.36+0.08/-0.00) | .093 +.003/-0.000 (2.36+0.08/-0.00) | 1.661 (42.19) | .140 (3.56) | .035 (0.89) | .102 (2.59) | .985 (25.02) | .128 (3.25) | .265 (6.73) | .425 (10.79) | OPTION A |
| 71251-0019 | BLACK | 5.0 VOLT STD DRAM | CENTER | OFFSET LEFT | NONE | .093 +.003/-0.000 (2.36+0.08/-0.00) | .093 +.003/-0.000 (2.36+0.08/-0.00) | NONE | 1.700 (43.18) | .155 (3.94) | .020 (0.51) | .127 (3.23) | .970 (24.64) | .113 (2.87) | .250 (6.35) | .410 (10.41) | OPTION B |
| 71251-0020 | BLACK | 3.3 VOLT STD DRAM | CENTER | CENTER | .080±.002 (2.03±0.05) | NONE | .080±.002 (2.03±0.05) | .080±.002 (2.03±0.05) | 1.700 (43.18) | .140 (3.56) | .020 (0.51) | .127 (3.23) | .970 (24.64) | .113 (2.87) | .250 (6.35) | .410 (10.41) | OPTION B |
| 71251-0021 | BLACK | 3.3 VOLT STD DRAM | CENTER | CENTER | .080±.002 (2.03±0.05) | NONE | .093 +.003/-0.000 (2.36+0.08/-0.00) | .093 +.003/-0.000 (2.36+0.08/-0.00) | 1.700 (43.18) | .155 (3.94) | .020 (0.51) | .127 (3.23) | .970 (24.64) | .113 (2.87) | .250 (6.35) | .410 (10.41) | OPTION B |
| 71251-0022 | BLACK | 3.3 VOLT UNBUFFERED | OFFSET RIGHT | CENTER | .080±.002 (2.03±0.05) | NONE | .093 +.003/-0.000 (2.36+0.08/-0.00) | .093 +.003/-0.000 (2.36+0.08/-0.00) | 1.661 (42.19) | .155 (3.94) | .020 (0.51) | .127 (3.23) | .970 (24.64) | .113 (2.87) | .250 (6.35) | .410 (10.41) | OPTION B |
| 71251-0023 | BLACK | 3.3 VOLT UNBUFFERED | OFFSET RIGHT | CENTER | .080±.002 (2.03±0.05) | NONE | NONE | .080±.002 (2.03±0.05) | 1.661 (42.19) | .125 (3.18) | .035 (0.89) | .102 (2.59) | .985 (25.02) | .128 (3.25) | .265 (6.73) | .425 (10.79) | OPTION A |
| 71251-0024 | BLACK | 3.3 VOLT UNBUFFERED | OFFSET RIGHT | CENTER | .080±.002 (2.03±0.05) | NONE | .093 +.003/-0.000 (2.36+0.08/-0.00) | .093 +.003/-0.000 (2.36+0.08/-0.00) | 1.661 (42.19) | .155 (3.94) | .020 (0.51) | .105 (2.67) | .970 (24.64) | .113 (2.87) | .250 (6.35) | .410 (10.41) | OPTION A |
| 71251-0026 | BEIGE | 3.3 VOLT STD DRAM | CENTER | CENTER | .080±.002 (2.03±0.05) | NONE | NONE | .080±.002 (2.03±0.05) | 1.700 (43.18) | .125 (3.18) | .035 (0.89) | .090 (2.29) | .985 (25.02) | .128 (3.25) | .265 (6.73) | .425 (10.79) | OPTION A |
| 71251-0027 | BLACK | 3.3 VOLT SYNCHRONOUS | OFFSET LEFT | CENTER | NONE | .093 +.003/-0.000 (2.36+0.08/-0.00) | .093 +.003/-0.000 (2.36+0.08/-0.00) | NONE | 1.739 (44.17) | .155 (3.94) | .020 (0.51) | .127 (3.23) | .970 (24.64) | .113 (2.87) | .250 (6.35) | .410 (10.41) | OPTION A |

| | | | | | | | | | | | | | |
|--|--|--|--|--|--|--|--|--|--|--|--|-----------------------------------|--|
| | | | | | | | | | | DIMENSIONS SHOWN (METRIC) INCH | | REVISE ONLY ON CAD SYSTEM | |
| | | | | | | | | | | UNLESS OTHERWISE SPECIFIED TOLERANCES ARE AS FOLLOWS | | TITLE | |
| | | | | | | | | | | INCH METRIC | | .050/(.127) PITCH MULTI-KEY | |
| | | | | | | | | | | 3 PLACE ± .005 --- | | 168 CKT DIMM RAM ASSY | |
| | | | | | | | | | | 4 PLACE ± .01 ± 0.13 | | 17.8mm LATCH SALES DWG. | |
| | | | | | | | | | | 5 PLACE --- ± 0.25 | | MOLEX INCORPORATED SHEET NO. DATE | |
| | | | | | | | | | | DRAWING APPLICABLE MUST REMAIN WITHIN DIMENSIONS | | 3 12/07/95 | |
| | | | | | | | | | | PART NO. SDA-71251-0000 | | CP | |
| | | | | | | | | | | DRAWING BY: DCB | | SCALE: 2:1 | |
| | | | | | | | | | | APP'D BY: DCB | | CP | |

| | | | | | | | | | | | | |
|----|----|----|----|---|---|---|---|---|---|---|---|---|
| 13 | 12 | 11 | 10 | 9 | 8 | 7 | 6 | 5 | 4 | 3 | 2 | 1 |
|----|----|----|----|---|---|---|---|---|---|---|---|---|