

Excellent Integrated System Limited

Stocking Distributor

Click to view price, real time Inventory, Delivery & Lifecycle Information:

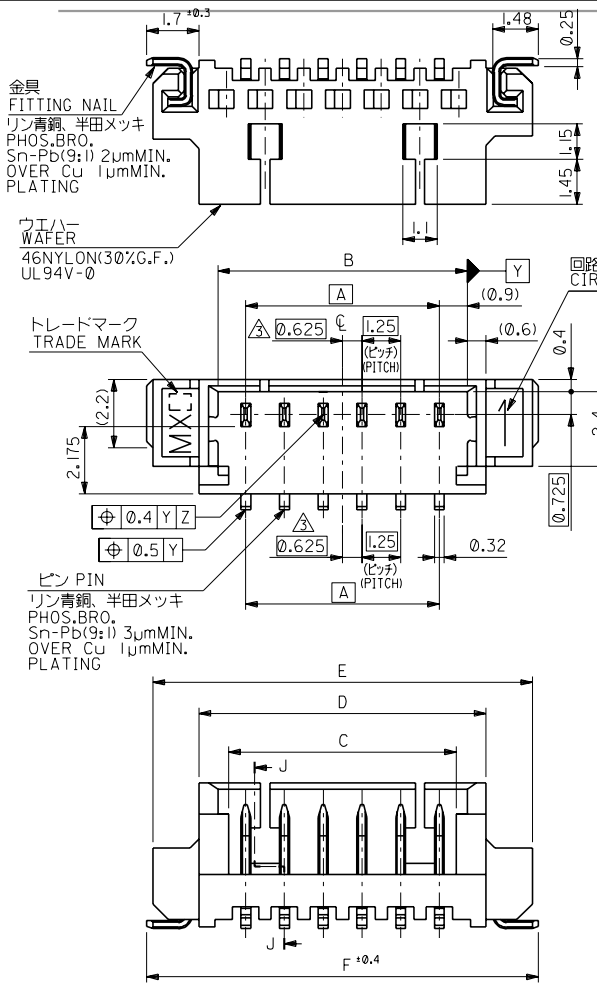
[Molex Connector Corporation](#)
[53398-0390](#)

For any questions, you can email us directly:

sales@integrated-circuit.com

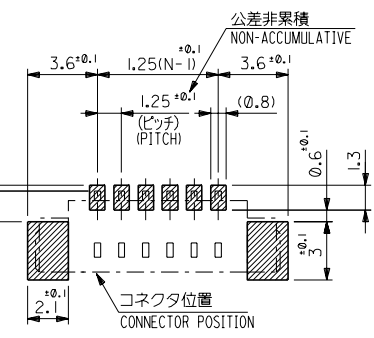
DWG. NO. SD-53398-**-10

DIMENSIONS IN METRIC DO NOT SCALE DRAWING



注記 NOTES

1. 嵌合相手: 51021 シリーズ MATE WITH : 51021 SERIES
- △ 水平面上においての、ワエハー底面 W とソルダーテール及びフィッティングネイル底面とのズレ量を示す。
MISALIGNMENT OF SOLDER TAIL & FITTING NAIL FROM W
- △ 偶数極にのみ適用。APPLY EVEN CIRCUIT PRODUCTS.
- △ ロック窓は、2, 3極は1ヶ所、4極以上は2ヶ所とする。
LOCKING WINDOW : ONE PLACE FOR 2&3 CKTS.
TWO PLACES FOR MORE THAN 4 CKTS.



23.9	23.5	20.5	18.6	19.3	17.5	53398-1510	15
22.65	22.25	19.25	17.35	18.05	16.25	-1410	14
21.4	21	18	16.1	16.8	15	-1310	13
20.15	19.75	16.75	14.85	15.55	13.75	-1210	12
18.9	18.5	15.5	13.6	14.3	12.5	-1110	11
17.65	17.25	14.25	12.35	13.05	11.25	-1010	10
16.4	16	13	11.1	11.8	10	-0910	9
15.15	14.75	11.75	9.85	10.55	8.75	-0810	8
13.9	13.5	10.5	8.6	9.3	7.5	-0710	7
12.65	12.25	9.25	7.35	8.05	6.25	-0610	6
11.4	11	8	6.1	6.8	5	-0510	5
10.15	9.75	6.75	4.85	5.55	3.75	-0410	4
8.9	8.5	5.5	3.6	4.3	2.5	-0310	3
7.65	7.25	4.25	2.35	3.05	1.25	53398-0210	2
F	E	D	C	B	A	ENG. NO.	極数 NO. OF CKTS.

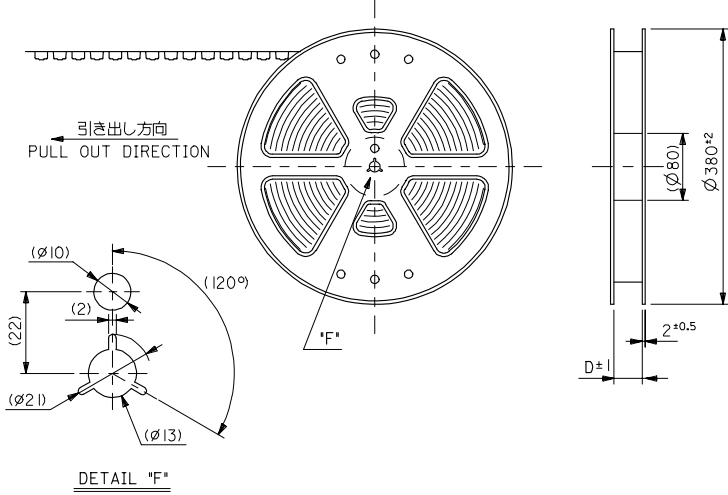
角度 ANGLE	+30	30以上 OVER	+0.3	10以上 OVER 30未滿	+0.25	10未滿 UNDER	+0.2
一般公差 GENERAL TOLERANCES	記号 LTR	変更内容 REVISION RECORD	DR	CHK	DATE		

F	変更 REVISED	UC2000-0630	K.K.	00/3/30	材料 MATERIAL	図中参照 SEE DRAWING
E	変更 REVISED	UC2000-0400	N.J.	91/11/6	仕上げ FINISH	—
D	変更 REVISED	UC2000-0400	H.H.	93/10/8	適用電線範囲 WIRE RANGE	—
C	変更 REVISED	UC2000-0400	K.T.	93/11/29	被覆外径 INS. RANGE	—
B	変更 REVISED	UC2000-0400	H.H.	93/6/18	DRAWN BY '92/10/12	CHK'D BY '00/3/30
A	変更 REVISED	UC2000-0400	H.H.	93/3/12	K.T.OJO	T.Y.AMAGUCHI
0	新規作成 RELEASED	UC2000-0400	H.H.	92/10/12	APP'D BY '00/3/30	尺度 SCALE
	材料 MATERIAL		DR	DATE	M.FUKUSHIMA	

MOLEX-JAPAN CO.,LTD. 日本モレックス株式会社	
REVISE ONLY ON CAD SYSTEM	
TITLE 名称	
1.25 WIRE TO BOARD CONN. WAFER ASS'Y FOR SMT (ST.)	
DWG. NO.	REV
SD-53398-**-10	F

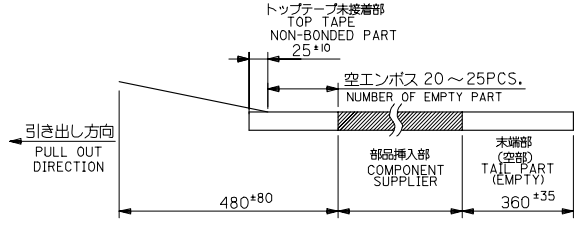
THIS DRAWING CONTAINS INFORMATION THAT IS PROPRIETARY TO MOLEX/JAPAN AND SHOULD NOT BE USED WITHOUT WRITTEN PERMISSION
本図面は日本モレックス(株)の所有する情報を含むもので、当社の許可なく複製を禁止する。
EN-01C(032)MXJ-32

10 9 8 7 6 5 4 3 2 1

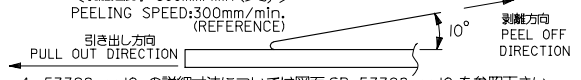


NOTES

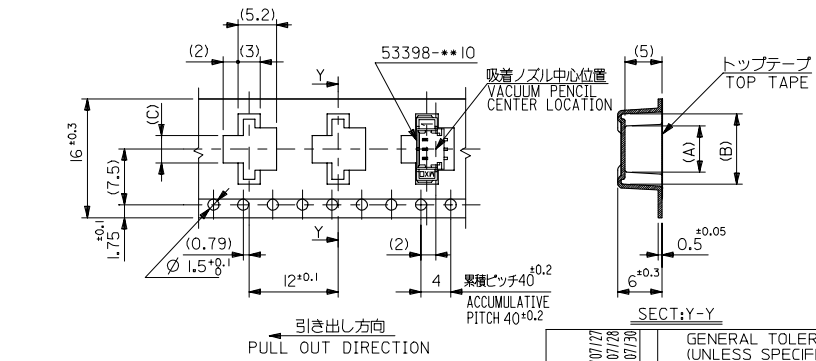
1. 梱包数量：1000個/リール
NUMBER OF CONNECTOR: 1000PCS/REEL
2. リードテープ長さ
LEAD TAPE LENGTH



3. トップテープの剥離強度：0.6±0.35N(60±35gf) (剥離方向は下図参照)
PEELING OFF FORCE OF TOP TAPE: 0.6±0.35N(60±35gf)
(PEELING DIRECTION IS SHOWN IN FOLLOWING FIG.)
<剥離速度：300mm/min(参考)>
PEELING SPEED: 300mm/min (REFERENCE)



4. 53398-***10 の詳細寸法については図面 SD-53398-***10 を参照下さい。
RE DETAILED DIMENSIONS, SEE SD-53398-***10.
5. 材料 (MATERIAL)
キャリアテープ (CARRIER TAPE): ポリプロピレン (POLYPROPYLENE)
トップテープ (TOP TAPE): PET, PE, PEF
リール (REEL): ポリスチレン (P.S.) <リサイクル材含む>
POLYSTYREN(P.S.) <RECYCLE MATERIAL CONTAINED>



16	17.4	3.7	9.5	5.8	53398-0390	3
キャリアテープ幅 CARRIER TAPE WIDTH	D	(C)	(B)	(A)	53398-0290	2
					ENG. NO.	種数 CKT.

引き出し方向
PULL OUT DIRECTION

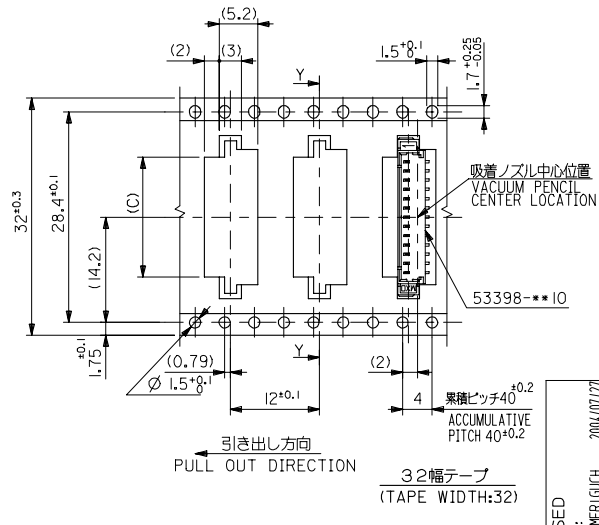
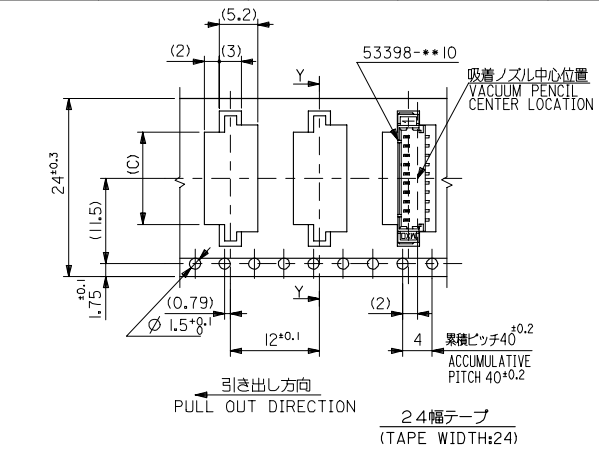
16幅テープ
(TAPE WIDTH: 16)

REVISED REC NO: T1 DRAWN BY: K. TOJO CHKD BY: YAMAGUCHI APP'RS: CHIKAMA DATE: 2004/07/28 DATE: 2004/07/30	GENERAL TOLERANCES (UNLESS SPECIFIED)		MM ONLY	SCALE ---	DESIGN UNITS METRIC	THIRD ANGLE PROJECTION
	10 UNDER	±0.2	DRAWN BY K. TOJO	DATE '93/04/13	TITLE 1.25 W/B CONN. WAFER ASS'Y FOR SMT. EMBOSSD TAPE PACKAGE MOLEX INCORPORATED	
	10 OVER 30 UNDER	±0.25	CHECKED BY YAMAGUCHI	DATE '00/12/08		
	30 OVER	±0.3	APPROVED BY FUKUSHIM	DATE '00/12/08		
	ANGULAR	±3 °	MATERIAL NO. SEE CHART	DOCUMENT NO. SD-53398-***90	SHEET NO. 1 OF 3	
DRAFT WHERE APPLICABLE MUST REMAIN WITHIN DIMENSIONS		SIZE A3 THIS DRAWING CONTAINS INFORMATION THAT IS PROPRIETARY TO MOLEX INCORPORATED AND SHOULD NOT BE USED WITHOUT WRITTEN PERMISSION				

10 9 8 7 6 5 4 3 2 1

F
E
D
C
B
A

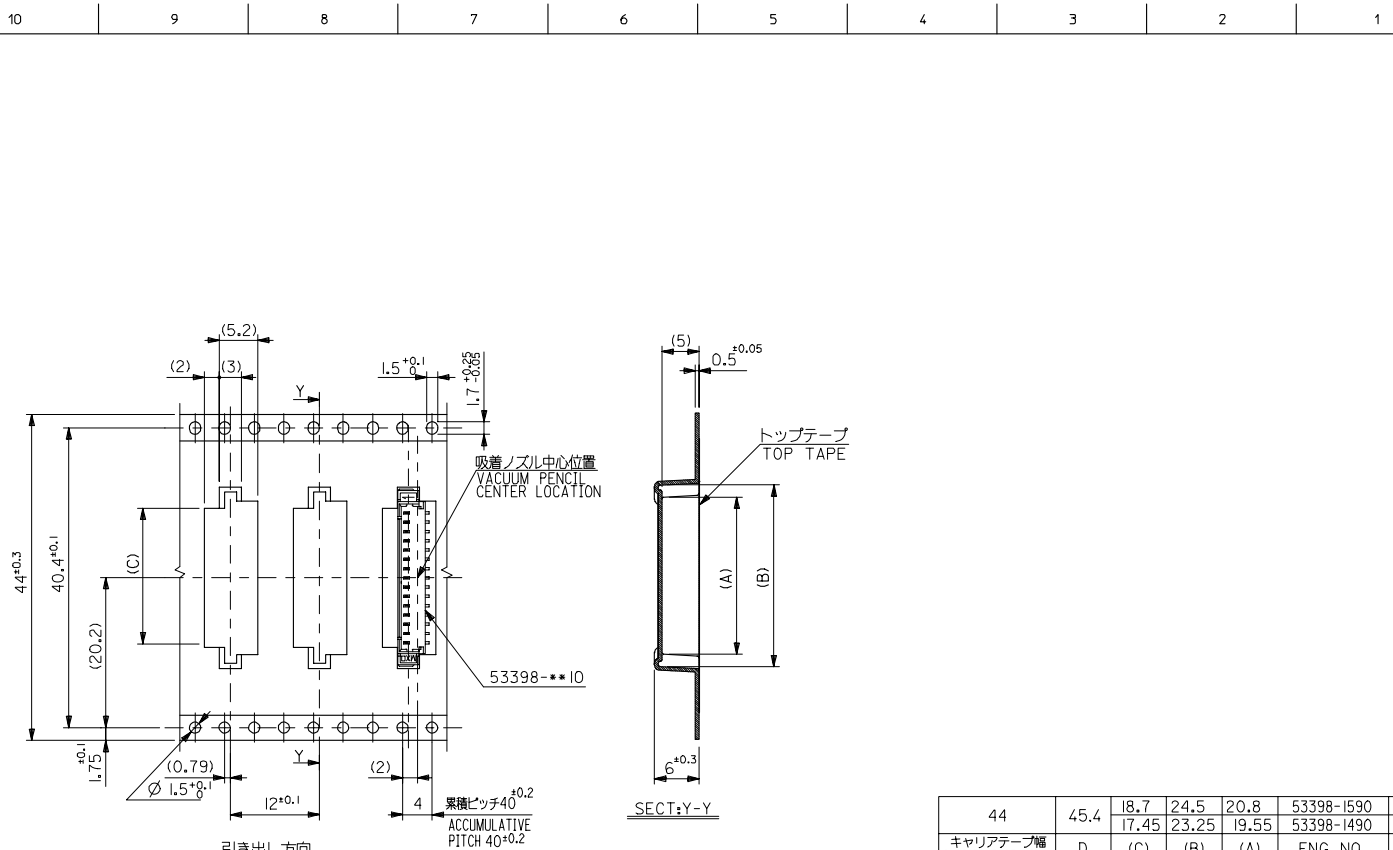
F
E
D
C
B
A



32	33.4	16.2	22	18.3	53398-1390	13
		14.95	20.75	17.05	-1290	12
24	25.4	13.7	19.5	15.8	-1190	11
		12.45	18.25	14.55	-1090	10
		11.2	17	13.3	-0990	9
		9.95	15.75	12.05	-0890	8
		8.7	14.5	10.8	-0790	7
		7.45	13.25	9.55	-0690	6
		6.2	12	8.3	-0590	5
		4.95	10.75	7.05	53398-0490	4
キャリアテープ幅 CARRIER TAPE WIDTH	D	(C)	(B)	(A)	ENG. NO.	種別 CKT.

REVISED EC NO: T1 DRWNER:GUCH CHKDK:ASAKAWA CHKDK:ASAKAWA APPR:SHIKAWA REV	2004/07/27	2004/07/28	2004/07/30	DESCRIPTION	GENERAL TOLERANCES (UNLESS SPECIFIED)	MM ONLY	SCALE ---	DESIGN UNITS METRIC	THIRD ANGLE PROJECTION
	10 UNDER	±0.2	30 UNDER	±0.25	10 OVER	±0.25	30 OVER	±0.3	ANGULAR ±3°
	DRAFT WHERE APPLICABLE MUST REMAIN WITHIN DIMENSIONS				SEE CHART	MATERIAL NO.		DOCUMENT NO.	SHEET NO.
	THIS DRAWING CONTAINS INFORMATION THAT IS PROPRIETARY TO MOLEX INCORPORATED AND SHOULD NOT BE USED WITHOUT WRITTEN PERMISSION				SIZE A3		SD-53398-***90		2 OF 3

1.25 W/B CONN. WAFER ASS'Y FOR SMT. EMBOSSED TAPE PACKAGE
MOLEX INCORPORATED



44	45.4	18.7	24.5	20.8	53398-1590	15
キャリアテープ幅 CARRIER TAPE WIDTH	D	(C)	(B)	(A)	53398-1490	14
					ENG. NO.	種別 CKT.

REVISED EC NO: DRAWN BY CHKD BY APPROV BY DATE	2004/07/27	DESCRIPTION GENERAL TOLERANCES (UNLESS SPECIFIED)	10 UNDER	±0.2	DRAWN BY DATE CHECKED BY DATE APPROVED BY DATE MATERIAL NO. DOCUMENT NO.	MM ONLY	SCALE ---	DESIGN UNITS METRIC	THIRD ANGLE PROJECTION
	2004/07/28		10 OVER 30 UNDER	±0.25		TITLE 1.25 W/B CONN. WAFER ASS'Y FOR SMT. EMBOSSD TAPE PACKAGE			
	2004/07/30		30 OVER	±0.3		MOLEX INCORPORATED			
			ANGULAR	±3 °		SEE CHART			
		DRAFT WHERE APPLICABLE MUST REMAIN WITHIN DIMENSIONS							