

Excellent Integrated System Limited

Stocking Distributor

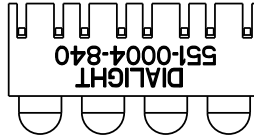
Click to view price, real time Inventory, Delivery & Lifecycle Information:

[Dialight](#)
[5510004840F](#)

For any questions, you can email us directly:
sales@integrated-circuit.com

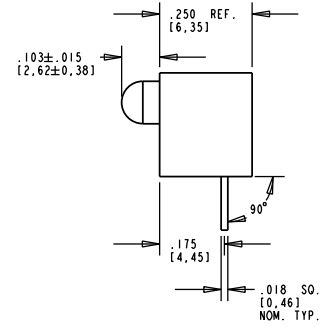
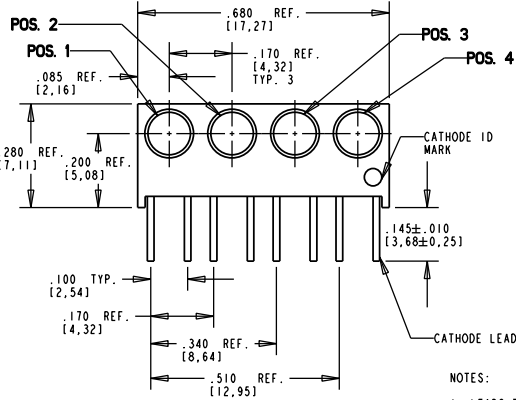
REV.	ECN NO.	REVISIONS	DRN.	CKD.	APP.	DATE
A		NEW RELEASE	JAV			

POS1	POS2	POS3	POS4
GREEN	GREEN	GREEN	RED

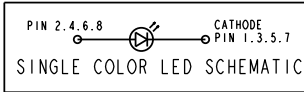
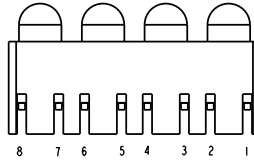
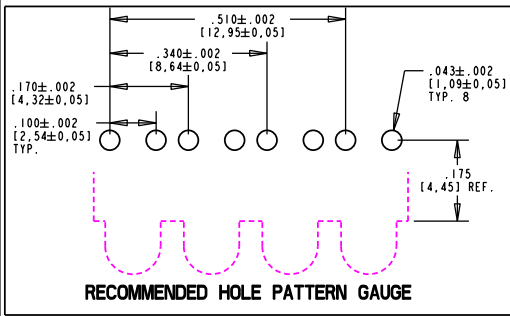


OPERATING CHARACTERISTICS AT 25°C AMBIENT						
CHARACTERISTICS	COLOR	MIN	TYP	MAX	UNITS	TEST CONDITIONS
LUMINOUS INTENSITY	GREEN	35	45		mcd	I _r = 20 mA
	RED	35	45			
FORWARD VOLTAGE	GREEN		2.2	3.0	V	I _r = 20 mA
	RED		1.9	2.6		
REVERSE CURRENT	GREEN			100	μA	V _r = 5 V
PEAK WAVELENGTH	GREEN		565		nm	
	RED		635			
VIEWING ANGLE	ALL		45		Degree	

ABSOLUTE MAXIMUM RATING AT 25°C AMBIENT			
CHARACTERISTICS	UNITS	GREEN	RED
CONTINUOUS FORWARD CURRENT	mA	30	30
PEAK FORWARD CURRENT (1/10 DUTY CYCLE, 0.1 ms PULSE WIDTH)	mA	90	90
LEAD SOLDERING TEMPERATURE (5 SEC., 1/16" FROM BODY)	°C	260	
OPERATING TEMPERATURE	°C	-20 TO +100	-55 TO +100
STORAGE TEMPERATURE	°C	-50 TO +100	



- NOTES:
- LEADS TO FIT INTO HOLES SPACED AS PER HOLE PATTERN GAUGE
 - LEADS TO BE FREE OF DEFORMATION AFTER BENDING AND CUTTING
 - LED LEAD DIMENSIONS SHOWN ARE MEASURED AT HOUSING EXIT
 - DIALIGHT PART NUMBER 551-0004-840



THIS DRAWING AND THE CONTENTS HEREIN ARE CONFIDENTIAL AND THE SOLE PROPERTY OF DIALIGHT. REPRODUCTION OF THIS DRAWING OR CONSTRUCTION OF ANY PARTS WITHIN THIS DRAWING ARE FORBIDDEN WITHOUT THE WRITTEN CONSENT OF DIALIGHT.		
SCALE: 4:000	DRAWING NUMBER	REV
ALL DIM'S IN: INCHES (MM)	C-17120	A
TOLERANCES: UNLESS OTHERWISE SPECIFIED	TITLE	
FRACTIONS: ±1/64	3MM QUAD LEVEL CBI BLOCK	
DECIMALS (.XX): ±.020	MATERIAL	
DECIMALS (.XXX): ±.015		
ANGLES: ±3°		
FINISH:		
FSCM 83330	Dialight 1501 ROUTE 34 SOUTH FARMINGDALE, NJ 07727	
	SHEET 1 OF 1	FAMILY TABLE: