

## Excellent Integrated System Limited

Stocking Distributor

Click to view price, real time Inventory, Delivery & Lifecycle Information:

[Dialight](#)  
[5510201F](#)

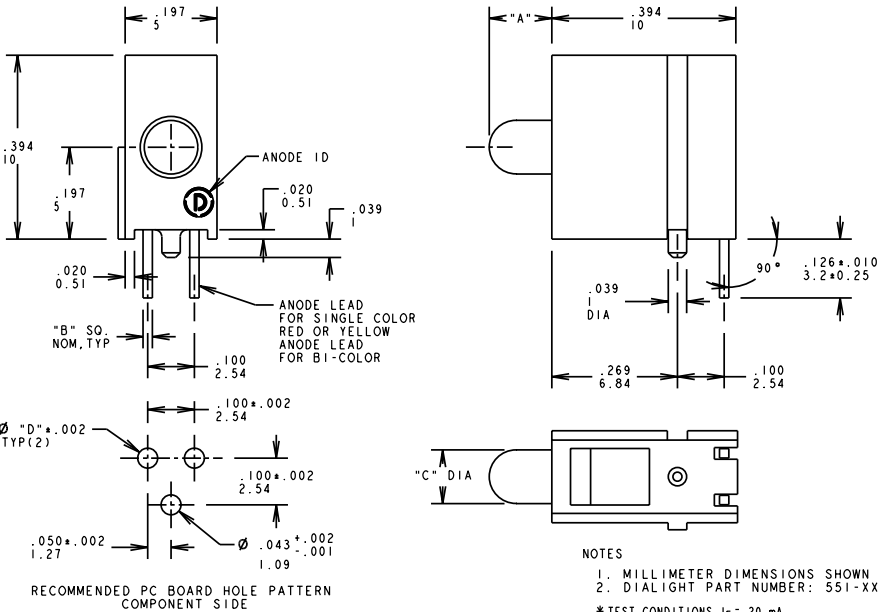
For any questions, you can email us directly:

[sales@integrated-circuit.com](mailto:sales@integrated-circuit.com)

OPERATING CHARACTERISTICS AT T<sub>a</sub> = 25 °C

PART NUMBER	FORWARD VOLTAGE/CURRENT		REVERSE VOLTAGE (V)	PEAK WAVELENGTH (nm)			LUMINOUS INTENSITY (mcd)			TEST CONDITIONS
	MIN	TYP		MIN	TYP	MAX	MIN	TYP	MAX	
551-0201	#2.1 V	#2.8 V	V <sub>r</sub> = 5 V MIN @ 100µA	565	4.7	12.6				I <sub>f</sub> = 10 mA
551-0301	#2.1 V	#2.8 V	V <sub>r</sub> = 5 V MIN @ 100µA	585	7.4	10.0				I <sub>f</sub> = 10 mA
551-0401	#2.0 V	#2.8 V	V <sub>r</sub> = 5 V MIN @ 100µA	635	7.4	10.0				I <sub>f</sub> = 10 mA
551-0501	1.0 mA	15 mA	V <sub>r</sub> = 5 V MIN @ 100µA	635	1.5	4.0				V <sub>r</sub> = 5 V
551-0601	12 mA	15 mA	V <sub>r</sub> = 5 V MIN @ 100µA	565	2.0	8.0				V <sub>r</sub> = 5 V
551-0701	10 mA	15 mA	V <sub>r</sub> = 5 V MIN @ 100µA	583	2.0	8.0				V <sub>r</sub> = 5 V
**551-0801	3.5 V	4.2 V		428	6.3		20			I <sub>f</sub> = 10 mA
551-1101	1.8 V	2.2 V	V <sub>r</sub> = 5 V MIN @ 50µA	635	1.0	1.8				I <sub>f</sub> = 2 mA
551-1201	1.9 V	2.7 V	V <sub>r</sub> = 5 V MIN @ 50µA	583	1.0	1.6				I <sub>f</sub> = 2 mA
551-1301	1.8 V	2.6 V	V <sub>r</sub> = 5 V MIN @ 50µA	565	1.0	1.6				I <sub>f</sub> = 2 mA
551-1501	#2.1 V	#2.8 V	V <sub>r</sub> = 5 V MIN @ 100µA	565	32	50				I <sub>f</sub> = 10 mA
551-1801	1.8 V	2.4 V	V <sub>r</sub> = 4 V MIN @ 100µA	660	8.7	48.0				I <sub>f</sub> = 20 mA
551-2501	1.5 V	2.2 V	V <sub>r</sub> = 5 V MIN @ 100µA	600	3.0	6.5				I <sub>f</sub> = 10 mA
551-3001	2.0 V	2.2 V		835/365	2.5					I <sub>f</sub> = 10 mA
551-3101	2.0 V	2.6 V		585/585	2.5					I <sub>f</sub> = 10 mA

REV.	ECN NO.	NEW RELEASE	DRN.	CKD.	APP.	DATE
A			YY		N.O.	2-18-94
B		CHANGED LED FOR P/N 551-1101 551-1201 & 551-1301. "D" DIM .002/- .001" WAS "Ø .044±.002"	YY		N.O.	5-2-94
C		ADDED 3 NEW P/N 551-0501, 551-0601 AND 551-0701.	YY		N.O.	7-15-94
D		ADDED 551-1801 & 551-2501; REMOVED REVERSE VOLTAGE SPEC ON 551-3001 & 551-3101.	TC		N.O.	1-7-97
E		P/N 551-0201 LUM. INTENSITY MIN. 4.7, TYP. 12.6 WAS 4.0, 8.5; FWD VOLTAGE TYP 2.1, MAX 2.8 WAS 2.3, 3.0; "C" DIM 118 ± .010 WAS .115 ± .010; P/N 551-0301 PEAK WAVELENGTH 585 WAS 583; LUM INT. MIN 7.4 WAS 6.0; FWD VOLT TYP 2.1, MAX 2.8 WAS 2.3, 3.0. ADDED NOTE 2; P/N 551-0401 LUM. INT. MIN. 7.4 WAS 6.0, FWD VOLTAGE TYP 2.0, MAX 2.8 WAS 2.2, 3.0.	TC	DC	N.O.	5-20-99
F		ADDED P/N 551-1501 AND TITLE.	TC	DC	N.O.	9-28-99
G		ADDED PART NUMBER 551-0801 AND ATTENTION NOTE.	TC			



PART NUMBER	LED COLOR	"A" DIMENSION (INCH/MM)	"B" DIMENSION (INCH)	"C" DIMENSION (INCH)	"D" DIMENSION (INCH)
551-0201	GREEN DIFFUSED	.132/3.35	.018	.118 ± .010	.040
551-0301	YELLOW DIFFUSED	.132/3.35	.018	.118 ± .010	.040
551-0401	RED DIFFUSED	.132/3.35	.018	.118 ± .010	.040
551-0501	RED DIFF. 5 VOLT	.132/3.35	.018	.115 ± .010	.040
551-0601	YELLOW DIFF. 5 VOLT	.132/3.35	.018	.115 ± .010	.040
551-0701	GREEN DIFF. 5 VOLT	.132/3.35	.018	.115 ± .010	.040
**551-0801	BLUE NON-TINTED DIFFUSED	.138/3.5	.020	.110 ± .004	.043
551-1101	RED DIFFUSED	.132/3.35	.018	.115 ± .010	.040
551-1201	YELLOW DIFFUSED	.132/3.35	.018	.115 ± .010	.040
551-1301	GREEN DIFFUSED	.132/3.35	.018	.115 ± .010	.040
551-1501	GREEN TINTED NON-DIFFUSED	.132/3.35	.018	.118 ± .010	.040
551-1801	RED AlGaAs DIFFUSED	.132/3.35	.020	.118 ± .010	.043
551-2501	ORANGE DIFFUSED	.132/3.35	.018	.115 ± .010	.040
551-3001	RED/GREEN DIFFUSED	.138/3.5	.020	.118 ± .004	.043
551-3101	YELLOW/GREEN DIFFUSED	.138/3.5	.020	.118 ± .004	.043

THIS DRAWING AND THE CONTENTS HEREIN ARE CONFIDENTIAL AND THE SOLE PROPERTY OF DIALIGHT. REPRODUCTION OF THIS DRAWING OR CONSTRUCTION OF ANY PARTS WITHIN THIS DRAWING ARE FORBIDDEN WITHOUT THE WRITTEN CONSENT OF DIALIGHT.

SCALE 5:1

DRAWING NUMBER	REV
C-15837	G

TITLE: 3 mm DIN CBI

MATERIAL:

ANGLES: ±3°

FINISH:

FSCM	83330	SHEET	OF	FAMILY TABLE:
------	-------	-------	----	---------------