

Excellent Integrated System Limited

Stocking Distributor

Click to view price, real time Inventory, Delivery & Lifecycle Information:

[Dialight](#)
[5511407F](#)

For any questions, you can email us directly:
sales@integrated-circuit.com



Distributor of Dialight: Excellent Integrated System Limited
 Datasheet of 5511407F - LED CBI 3MM RED ALGAAS WATER CLR

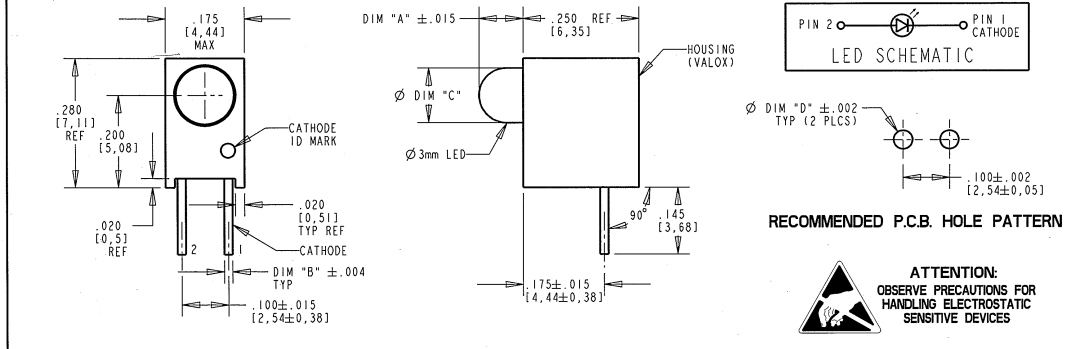
DIALIGHT PART NUMBER	LED COLOR	DIM "A"	DIM "B"	DIM "C"	DIM "D"	OPERATING CHARACTERISTICS AT 25°C AMBIENT												
						LUMINOUS INTENSITY TEST CONDITION			FORWARD VOLTAGE / CURRENT		FORWARD VOLTAGE / CURRENT		REVERSE CURRENT		PEAK WAVELENGTH		VIEWING ANGLE (DEG)	
						MIN	TYP	MAX	TEST COND	TYP	MAX	MAX	TYP	TYP	TYP	TYP		
551-0207F	GREEN DIFFUSED	.105	.020 SQ.	.122±.008	.043	IF = 10mA	5.6	16.0	---	IF = 10mA	2.1 V	3.0 V	10	563	45			
551-0307F	YELLOW DIFFUSED	.105	.020 SQ.	.122±.008	.043	IF = 10mA	2.2	6.3	---	IF = 10mA	2.1 V	3.0 V	10	585	45			
551-0407F	RED DIFFUSED	.105	.020 SQ.	.122±.008	.043	IF = 10mA	3.6	10	---	IF = 10mA	2.0 V	3.0 V	10	650	45			
551-0507F	RED DIFFUSED	.095	.018 x .016	.118±.010	.040	VF = 5V	8.7	29	---	VF = 5V	10 mA	20 mA	100	635	60			
551-0607F	GREEN DIFFUSED	.095	.018 x .016	.118±.010	.040	VF = 5V	5.6	19	---	VF = 5V	10 mA	20 mA	100	565	60			
551-0707F	YELLOW DIFFUSED	.095	.018 x .016	.118±.010	.040	VF = 5V	3.7	12.6	---	VF = 5V	10 mA	20 mA	100	585	60			
551-0807F	BLUE NON-TINTED DIFF	.101	.020 SQ.	.110±.004	.043	IF = 10mA	7.1	12.5	18	IF = 10mA	3.5 V	4.1 V	10	428	70			
551-1107F	RED DIFFUSED	.095	.018 x .016	.118±.010	.040	IF = 2mA	1.0	1.6	---	IF = 2mA	1.7 V	2.2 V	10	635	60			
551-1207F	YELLOW DIFFUSED	.095	.018 x .016	.118±.010	.040	IF = 2mA	1.0	1.6	---	IF = 2mA	1.8 V	2.7 V	10	585	60			
551-1307F	GREEN DIFFUSED	.095	.018 x .016	.118±.010	.040	IF = 2mA	1.0	1.6	---	IF = 2mA	1.9 V	2.2 V	10	565	60			
551-1407F	AlGaAs RED WC	.095	.018 SQ.	.115±.010	.040	IF = 1mA	2	3	---	IF = 1mA	1.6 V	1.8 V	100	645	45			
551-1507F	GREEN TINTED NON-DIFF	.095	.018 x .016	.118±.010	.040	IF = 10mA	32	50	---	IF = 20mA	2.1 V	2.8 V	100	565	45			
551-1607F	YELLOW TINTED NON-DIFF	.095	.018 x .016	.118±.010	.040	IF = 10mA	10	50	---	IF = 20mA	2.1 V	2.8 V	100	565	45			
551-1707F	RED TINTED NON-DIFF	.095	.018 x .016	.118±.010	.040	IF = 10mA	8.7	29	---	IF = 20mA	2.0 V	2.8 V	100	635	45			
551-2507F	ORANGE DIFFUSED	.095	.018 SQ.	.115±.010	.040	IF = 10mA	3.4	7.0	10.8	IF = 10mA	1.9 V	2.4 V	100	600	60			
551-5807F	AlInGaP YELLOW WC	.095	.018 x .016	.118±.010	.040	IF = 20mA	180	320	---	IF = 20mA	2.0 V	2.4 V	100	588	56			
551-5907F	InGaN GREEN WC	.101	.020 SQ.	.110±.004	.043	IF = 10mA	260	---	710	IF = 10mA	3.0 V	3.7 V	10	523	30			
551-6107F	InGaN BLUE WC	.095	.018 SQ.	.115±.010	.040	IF = 20mA	110	---	310	IF = 20mA	3.5 V	4.0 V	10	470	45			

REV	ECN NO	REVISIONS	DRN	CKD	APP	DATE
A	---	NEW RELEASE	TWC	TC	N. O.	9-22-05
B	---	ADDED P/N 551-2507F	TWC	MES	N. O.	11-2-05
C	---	ADDED P/N'S 551-5807F, -5907F, -6107F; ADDED LED SCHEMATIC; ADDED NOTES 1, 2, AND 3; ADDED METRIC DIMS, UPDATED SPECS.	KLJ	---	---	12-9-08

PART NUMBER	ABSOLUTE MAXIMUM RATINGS AT 25°C AMBIENT									
	POWER DISSIPATION	DC FORWARD VOLTAGE	CONT. FWD CURRENT	PEAK FWD CURRENT	LINEAR DERATION	REVERSE VOLTAGE	SOLDERING TEMP FOR 5 SEC.	OPERATING TEMPERATURE	STORAGE TEMPERATURE	
551-0207F	75 mW	---	25 mA	60 mA	0.5 mA/°C FROM 50°C	3 V	260 °C	-25°C / +85 °C	-30°C / +100°C	
551-0307F	60 mW	---	20 mA	60 mA	0.5 mA/°C FROM 50°C	3 V	260 °C	-25°C / +85 °C	-30°C / +100°C	
551-0407F	60 mW	---	20 mA	60 mA	0.5 mA/°C FROM 50°C	3 V	260 °C	-25°C / +85 °C	-30°C / +100°C	
551-0507F	---	7.5 V	---	---	0.086 V/°C FROM 50°C	5 V	260 °C	-40°C / +85 °C	-55°C / +100°C	
551-0607F	---	7.5 V	---	---	0.086 V/°C FROM 50°C	5 V	260 °C	-40°C / +85 °C	-55°C / +100°C	
551-0707F	---	7.5 V	---	---	0.086 V/°C FROM 50°C	5 V	260 °C	-40°C / +85 °C	-55°C / +100°C	
551-0807F	90 mW	---	20 mA	---	0.44 mA/°C FROM 50°C	5 V	260 °C	-55°C / +100°C	-55°C / +100°C	
551-1107F	20 mW	---	7 mA	---	0.7 mA/°C FROM 90°C	5 V	260 °C	-55°C / +100°C	-55°C / +100°C	
551-1207F	20 mW	---	7 mA	---	0.7 mA/°C FROM 90°C	5 V	260 °C	-55°C / +100°C	-55°C / +100°C	
551-1307F	20 mW	---	7 mA	---	0.7 mA/°C FROM 90°C	5 V	260 °C	-55°C / +100°C	-55°C / +100°C	
551-1407F	87 mW	---	30 mA	---	0.5 mA/°C FROM 50°C	5 V	260 °C	-20°C / +100°C	-55°C / +100°C	
551-1507F	100 mW	---	30 mA	120 mA	0.4 mA/°C FROM 50°C	5 V	260 °C	-55°C / +100°C	-55°C / +100°C	
551-1607F	60 mW	---	20 mA	80 mA	0.25 mA/°C FROM 50°C	5 V	260 °C	-55°C / +100°C	-55°C / +100°C	
551-1707F	100 mW	---	30 mA	120 mA	0.4 mA/°C FROM 50°C	5 V	260 °C	-55°C / +100°C	-55°C / +100°C	
551-2507F	135 mW	---	25 mA	90 mA	0.5 mA/°C FROM 50°C	5 V	260 °C	-55°C / +100°C	-55°C / +100°C	
551-5807F	75 mW	---	30 mA	60 mA	0.4 mA/°C FROM 70°C	5 V	260 °C	-40°C / +100°C	-55°C / +100°C	
551-5907F	80 mW	---	20 mA	---	0.57 mA/°C FROM 65°C	5 V	260 °C	-55°C / +100°C	-55°C / +100°C	
551-6107F	140 mW	---	30 mA	100 mA	0.32 mA/°C FROM 25°C	5 V	260 °C	-35°C / +85°C	-35°C / +85°C	

NOTES:

- LED LEAD DIMENSIONS SHOWN ARE MEASURED AT HOUSING EXIT.
- LEADS TO FIT INTO HOLES SPACED AS PER PATTERN.
- PIN NUMBERS FOR REFERENCE ONLY. DESIGNATION NON-EXISTENT ON PART.
- DIALIGHT PART NUMBERS: 551-XX07F.
- THIS ASSEMBLY CONTAINS ELECTROSTATIC DISCHARGE SENSITIVE DEVICES (ESDS). MAINTAIN ALL PRECAUTIONARY MEASURES DURING ASSEMBLY, HANDLING, AND STORAGE IN ACCORDANCE WITH IPC-A-610.



RoHS COMPLIANT 551-XX07F

Part Numbers with the "F" suffix ending are RoHS Compliant. For example: 551-0207F. Packaging is marked with "RoHS Compliant" label or equivalent markings. Parts can be wave soldered, dip soldered or hand soldered using typical lead-free soldering process with max 260°C temp. for 5 sec.

THIS DRAWING AND THE CONTENTS HEREIN ARE CONFIDENTIAL AND THE SOLE PROPERTY OF DIALIGHT. REPRODUCTION OF THIS DRAWING OR CONSTRUCTION OF ANY PARTS WITHIN THIS DRAWING ARE FORBIDDEN WITHOUT THE WRITTEN CONSENT OF DIALIGHT.	
SCALE: DRAWING SCALE	DRAWING NUMBER
ALL DIM'S IN: INCHES (MM)	C-17306
TOLERANCES: UNLESS OTHERWISE SPECIFIED	REV
FRACTIONS: ±1/64	C
DECIMALS (.XXX): ±.02	TITLE 3mm CBI, .200 LED CENTERLINE
DECIMALS (.XXX): ±.010	RoHS COMPLIANT
ANGLES: ±3°	MATERIAL
FINISH:	Dialight
FSCM 83330	1501 ROUTE 34 SOUTH FARMINGDALE, NJ 07727
	SHEET 1 OF 1 FAMILY TABLE: