

## Excellent Integrated System Limited

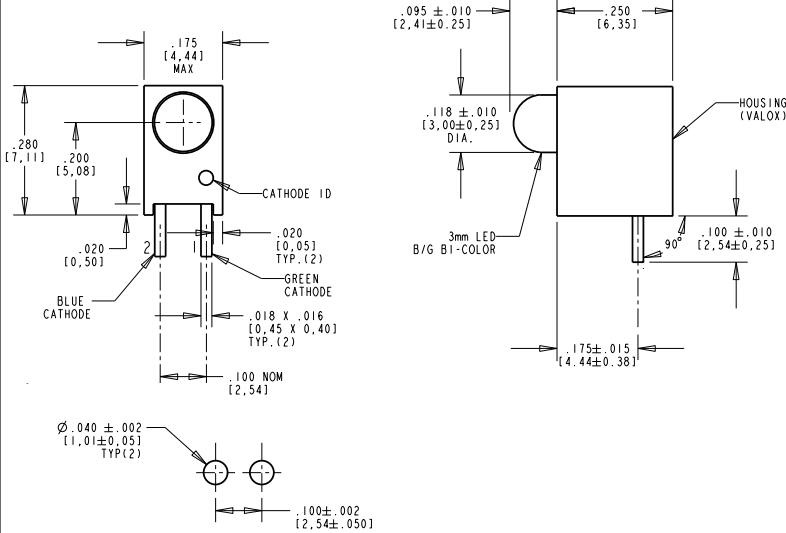
Stocking Distributor

Click to view price, real time Inventory, Delivery & Lifecycle Information:

[Dialight](#)  
[5513307802F](#)

For any questions, you can email us directly:  
[sales@integrated-circuit.com](mailto:sales@integrated-circuit.com)

REV	ECN NO	REVISIONS	DRN	CKD	APP	DATE
A		NEW RELEASE	KLJ	N.O.	MES	11-16-07
B		"4.0" WAS "2.6"	KLJ			



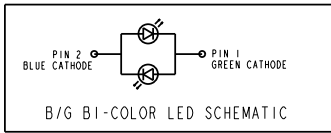
COLOR	PEAK EMISSION WAVELENGTH (nm)	DOMINANT WAVELENGTH (nm) TYP	VIEWING ANGLE (°)	LUMINOUS INTENSITY (mcd) @ I <sub>f</sub> = 20 mA, 25°C		FORWARD VOLTAGE (V) @ I <sub>f</sub> = 20 mA, 25°C	
				MIN	TYP	TYP	MAX
GREEN	565	569	60	6.5	14	2.1	2.6
BLUE	428	465	60	3.8	8.5	4.0	5.0

ABSOLUTE MAXIMUM RATINGS AT 25°C AMBIENT	GREEN	BLUE	UNITS
POWER DISSIPATION	75	100	mW
DC FORWARD CURRENT	30	20	mA
PEAK FORWARD CURRENT (1/10 DUTY CYCLE, 0.1 ms PULSE WIDTH)	90	50	mA
DERATE LINEARLY FROM 30°C FOR BLUE / 50°C FOR GREEN	0.40	0.30	mA/°C
REVERSE VOLTAGE	5	5	V
SOLDERING TEMPERATURE (.157 in FROM BODY)	260 FOR 5 SECONDS		°C
OPERATING TEMPERATURE	-20 TO +80		°C
STORAGE TEMPERATURE	-30 TO +100		°C

**RoHS Compliant 551-3307-802F Thru hole Bi-color CBI**

Part Numbers with the "F" suffix ending are RoHS Compliant.  
 Example: 551-3307-802F  
 The bag packaging is marked with "RoHS Compliant" label or equivalent markings.  
 Parts can be wave soldered, dip soldered or hand soldered using typical lead-free soldering process with max 260°C temp. for 5 sec.

RECOMMENDED P.C.B. HOLE PATTERN



NOTES:

- LEADS TO FIT INTO HOLE PATTERN SPACED AS SHOWN.
- LEAD FINISH IS TIN (Sn) PLATED OVER NICKEL (Ni) ON COPPER ALLOY (Cu).
- LED LEAD DIMENSIONS SHOWN ARE MEASURED AT HOUSING EXIT.
- PIN NUMBERS FOR REFERENCE ONLY, DESIGNATION NON-EXISTENT ON PARTS.
- DIALIGHT PART NUMBER: 551-3307-802F.
- THIS ASSEMBLY CONTAINS ELECTROSTATIC DISCHARGE SENSITIVE DEVICES (ESDS). MAINTAIN ALL PRECAUTIONARY MEASURES DURING ASSEMBLY, HANDLING AND STORAGE IN ACCORDANCE WITH IPC-A-610.



**ATTENTION:**  
 OBSERVE PRECAUTIONS FOR  
 HANDLING ELECTROSTATIC  
 SENSITIVE DEVICES

THIS DRAWING AND THE CONTENTS HEREIN ARE CONFIDENTIAL AND THE SOLE PROPERTY OF DIALIGHT. REPRODUCTION OF THIS DRAWING OR CONSTRUCTION OF ANY PARTS WITHIN THIS DRAWING ARE FORBIDDEN WITHOUT THE WRITTEN CONSENT OF DIALIGHT.		DRAWING NUMBER	REV
SCALE: DRAWING SCALE		C-17554	B
TOLERANCES: UNLESS OTHERWISE SPECIFIED		TITLE 3mm LED CBI .200" HIGH C.	
FRACTIONS: ±1/64		B/G BI-COLOR	
DECIMALS (.XX): ±.01		MATERIAL	
DECIMALS (.XXX): ±.005		Dialight	
DECIMALS (.XXXX): ±.001		1501 ROUTE 34 SOUTH	
ANGLES: ±1°		FARMINGDALE, NJ 07727	
FINISH:		FSCM 83330	
FSCM 83330		SHEET 11 OF 11 FAMILY TABLE:	