

Excellent Integrated System Limited

Stocking Distributor

Click to view price, real time Inventory, Delivery & Lifecycle Information:

[Dialight](#)
[5530008835F](#)

For any questions, you can email us directly:
sales@integrated-circuit.com

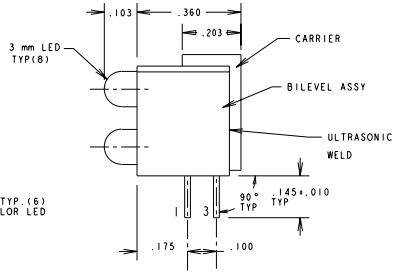
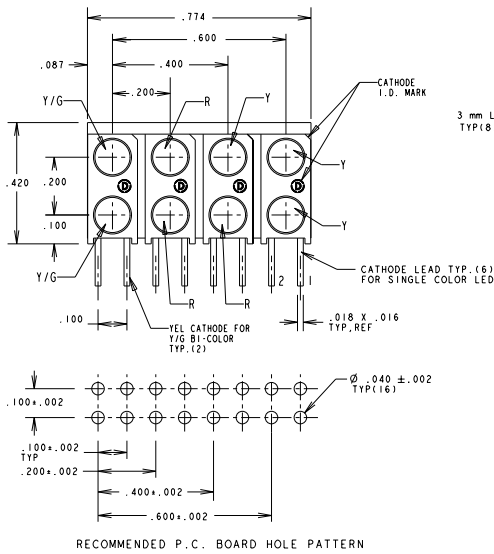
REV.	ECN NO.	REVISIONS	DRN.	CKD.	APP.	DATE
A		NEW RELEASE	DC			

LED = YELLOW/GREEN BI-COLOR						
OPERATING CHARACTERISTICS AT 25°C AMBIENT						
CHARACTERISTICS	LED COLOR	MIN	TYP	MAX	UNITS	TEST CONDITIONS
LUMINOUS INTENSITY	YELLOW	2.5	4.3		mc/d	$I_f = 10 \text{ mA}$
	GREEN	2.5	6.3			
FORWARD VOLTAGE	YELLOW		2.1	2.8	V	$I_f = 20 \text{ mA}$
	GREEN					
PEAK WAVELENGTH	YELLOW		585		nm	
	GREEN		565			
VIEWING ANGLE	YELLOW		80		Degree	
	GREEN					
CAPACITANCE	YELLOW		15		pf	$V_r = 0, f = 1 \text{ MHz}$
	GREEN		35			

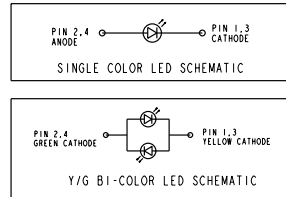
ABSOLUTE MAXIMUM RATING AT 25°C AMBIENT			
	YELLOW	GREEN	UNITS
POWER DISSIPATION	60	100	mW
CONTINUOUS FORWARD CURRENT	20	30	mA
DERATE LINEARLY FROM 50°C	0.25	0.4	mA/°C
PEAK FORWARD CURRENT (1/10 DUTY CYCLE, 0.1 ms PULSE WIDTH)	80	120	mA
LEAD SOLDERING TEMPERATURE, 5 SEC., 1/16" FROM BODY	260		°C
OPERATING TEMPERATURE	-55 TO 100		°C
STORAGE TEMPERATURE	-55 TO 100		°C

OPERATING CHARACTERISTICS AT 25°C AMBIENT						
CHARACTERISTICS	LED COLOR	MIN	TYP	MAX	UNITS	TEST CONDITIONS
LUMINOUS INTENSITY	RED	7.4	10.0		mc/d	$I_f = 10 \text{ mA}$
	YELLOW	7.4	10.0			
FORWARD VOLTAGE	RED		2.0	2.8	V	$I_f = 20 \text{ mA}$
	YELLOW		2.1	2.8		
REVERSE CURRENT	ALL			100	µA	$V_r = 5 \text{ V}$
PEAK WAVELENGTH	RED		635		nm	
	YELLOW		585			
VIEWING ANGLE	ALL		60		Degree	
CAPACITANCE	RED		20		pf	$V_r = 0, f = 1 \text{ MHz}$
	YELLOW		15			

ABSOLUTE MAXIMUM RATING AT 25°C AMBIENT			
	RED	YELLOW	UNITS
POWER DISSIPATION	100	60	mW
CONTINUOUS FORWARD CURRENT	30	100	mA
DERATE LINEARLY FROM 50°C	0.4	0.25	mA/°C
PEAK FORWARD CURRENT (1/10 DUTY CYCLE, 0.1 ms PULSE WIDTH)	120	80	mA
LEAD SOLDERING TEMPERATURE, 5 SEC., 1/16" FROM BODY	260		°C
OPERATING TEMPERATURE	-55 TO 100		°C
STORAGE TEMPERATURE	-55 TO 100		°C



- NOTES:
- LEADS TO FIT INTO .040 DIA. HOLES SPACED AS PER PATTERN.
 - PIN NUMBERS FOR REFERENCE ONLY. DESIGNATION NON-EXISTENT ON PARTS.
 - LED LEAD DIMENSIONS SHOWN ARE MEASURED AT HOUSING EXIT.
 - PACKAGE PARTS IN TUBE WITH TWO END PLUGS. (29 PCS. PER TUBE) MARK LABEL WITH MFG., P/N, DATE CODE, QTY/TUBE.
 - DIALIGHT PART NO. 553-0008-835.



THIS DRAWING AND THE CONTENTS HEREIN ARE CONFIDENTIAL AND THE SOLE PROPERTY OF DIALIGHT. REPRODUCTION OF THIS DRAWING OR CONSTRUCTION OF ANY PARTS WITHIN THIS DRAWING ARE FORBIDDEN WITHOUT THE WRITTEN CONSENT OF DIALIGHT.		
SCALE: 4:1	DRAWING NUMBER	REV
TOLERANCES: UNLESS OTHERWISE SPECIFIED	C-16816	A
FRACTIONS: 1/16"	TITLE	
DECIMALS (.XXX): 0.004	3mm LED CBI GANGED ARRAY	
DECIMALS (.XXX): 0.005	MATERIAL	
ANGLES: 45°		
FINISH:	Dialight	1501 ROUTE 34 SOUTH FARMINGDALE, NJ 07727
FSCN 83330	SHEET OF	FAMILY TABLES: