

## Excellent Integrated System Limited

Stocking Distributor

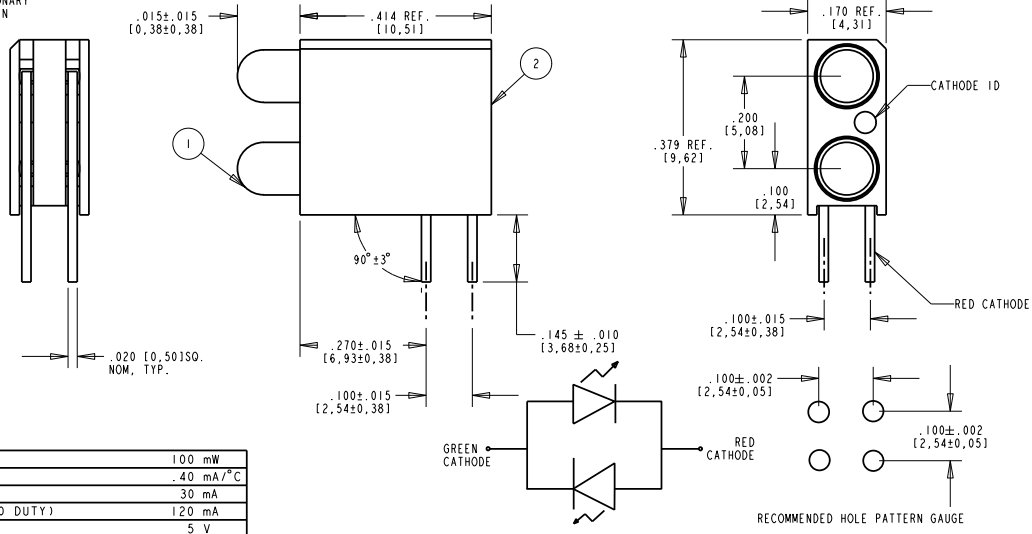
Click to view price, real time Inventory, Delivery & Lifecycle Information:

[Dialight](#)  
[5530711100F](#)

For any questions, you can email us directly:  
[sales@integrated-circuit.com](mailto:sales@integrated-circuit.com)

- NOTES:
- LEADS TO BE FREE OF DEFORMATION AFTER BENDING AND CUTTING.
  - LAMP MUST BE SEATED ALL THE WAY DOWN INTO HOUSING. BEND MUST BE TIGHT, NO LONGITUDINAL TRAVEL ALONG AXIS ALLOWED.
  - FOR DIALIGHT INTERNAL DRAWING REFER TO 553-0711-100F.
  - THIS ASSEMBLY CONTAINS ELECTROSTATIC DISCHARGE SENSITIVE DEVICES (ESDS). MAINTAIN ALL PRECAUTIONARY MEASURES DURING ASSEMBLY, HANDLING AND STORAGE IN ACCORDANCE WITH IPC-A-610.

REV	ECN NO	REVISIONS	DRN	CKD	APP	DATE
A		NEW RELEASE	CE	AE		



ABSOLUTE MAXIMUM RATINGS AT 25°C AMBIENT

POWER DISSIPATION	100 mW
DERATE LINEARLY FROM 50°C	.40 mA/°C
CONTINUOUS FORWARD CURRENT	30 mA
PEAK FORWARD CURRENT (10 ms PULSE WIDTH, 1/10 DUTY)	120 mA
PEAK REVERSE VOLTAGE	5 V
LEAD SOLDERING TEMPERATURE, 6 SEC., 1/16" FROM BASE	260°C
OPERATING TEMPERATURE	-55°C TO +100°C
STORAGE TEMPERATURE	-55°C TO +100°C

OPERATING CHARACTERISTICS AT 25°C AMBIENT

LED CHARACTERISTICS	COLOR	MIN.	TYP.	MAX.	UNITS	TEST CONDITIONS
LUMINOUS INTENSITY	GREEN RED	3.7 2.5	10.0 4.7		mc d	I <sub>F</sub> = 10 mA
FORWARD VOLTAGE	GREEN RED		2.1 2.0	2.8	V	I <sub>F</sub> = 20 mA
REVERSE CURRENT	GREEN RED			100	µA	V <sub>R</sub> = 5 V
PEAK WAVELENGTH	GREEN RED		565 635		nm	I <sub>F</sub> = 20 mA
2 X 1/2-INTENSITY ANGLE	GREEN RED		60		DEGREES	I <sub>F</sub> = 20 mA
CAPACITANCE	GREEN RED		35 20		pF	V <sub>R</sub> = 0 V, f = 1 MHz

RoHS Compliant 553-0711-100F  
 Part Numbers with the "F" suffix ending are RoHS Compliant.  
 Packaging is marked with "RoHS Compliant" label or equivalent markings.  
 Parts can be wave soldered, dip soldered or hand soldered using typical lead-free soldering process with max 260°C temp. for 5 sec.



**ATTENTION:**  
 OBSERVE PRECAUTIONS FOR  
 HANDLING ELECTROSTATIC  
 SENSITIVE DEVICES

ITEM	QTY	DESCRIPTION
2	1	HOUSING
1	2	LED RED-GREEN BICOLOR

THIS DRAWING AND THE CONTENTS HEREIN ARE CONFIDENTIAL AND THE SOLE PROPERTY OF DIALIGHT. REPRODUCTION OF THIS DRAWING OR CONSTRUCTION OF ANY PARTS WITHIN THIS DRAWING ARE FORBIDDEN WITHOUT THE WRITTEN CONSENT OF DIALIGHT.

SCALE: 5:100  
 ALL DIM'S IN: INCHES (MM)  
 TOLERANCES: UNLESS OTHERWISE SPECIFIED  
 FRACTIONS: ±1/64  
 DECIMALS (.XX): ±.01  
 DECIMALS (.XXX): ±.005  
 ANGLES: ±1°  
 FINISH: -

DRAWING NUMBER: C-17376  
 REV: A

TITLE: 3 mm. Bi-Level Cbi R/G, R/G  
 RoHS COMPLIANT

MATERIAL: -

Dialight 1501 ROUTE 34 SOUTH FARMINGDALE, NJ 07727

FSCM 83330 SHEET 1 OF 1 FAMILY TABLE: