

Excellent Integrated System Limited

Stocking Distributor

Click to view price, real time Inventory, Delivery & Lifecycle Information:

[Dialight](#)
[5530781853F](#)

For any questions, you can email us directly:
sales@integrated-circuit.com

REV	ECN NO	REVISIONS	DRN	CKD	APP	DATE
A		NEW RELEASE	ALV			

- NOTES:
1. MILLIMETER DIMENSIONS SHOWN FOR REFERENCE ONLY.
 2. LEADS TO FIT INTO HOLES SPACED AS PER PATTERN.
 3. PIN NUMBERS FOR REFERENCE ONLY, DESIGNATION NON-EXISTENT ON PART.
 4. DIALIGHT PART NUMBER: 553-0781-853F.
 5. THIS ASSEMBLY CONTAINS ELECTROSTATIC SENSITIVE DEVICES (ESDS). MAINTAIN ALL PRECAUTIONARY MEASURES DURING ASSEMBLY, HANDLING AND STORAGE IN ACCORDANCE WITH IPC-A-610.

RoHS Compliant 553-0781-853F Thru hole Bi-level CBI

Part Numbers with the "F" suffix ending are RoHS Compliant. The bag packaging is marked with "RoHS Compliant" label or equivalent markings.
 Parts can be wave soldered, dip soldered or hand soldered using typical lead-free soldering process with max 260°C temp. for 5 sec.

RED/GREEN BI-COLOR BOTTOM POSITION (LED POS 2.)

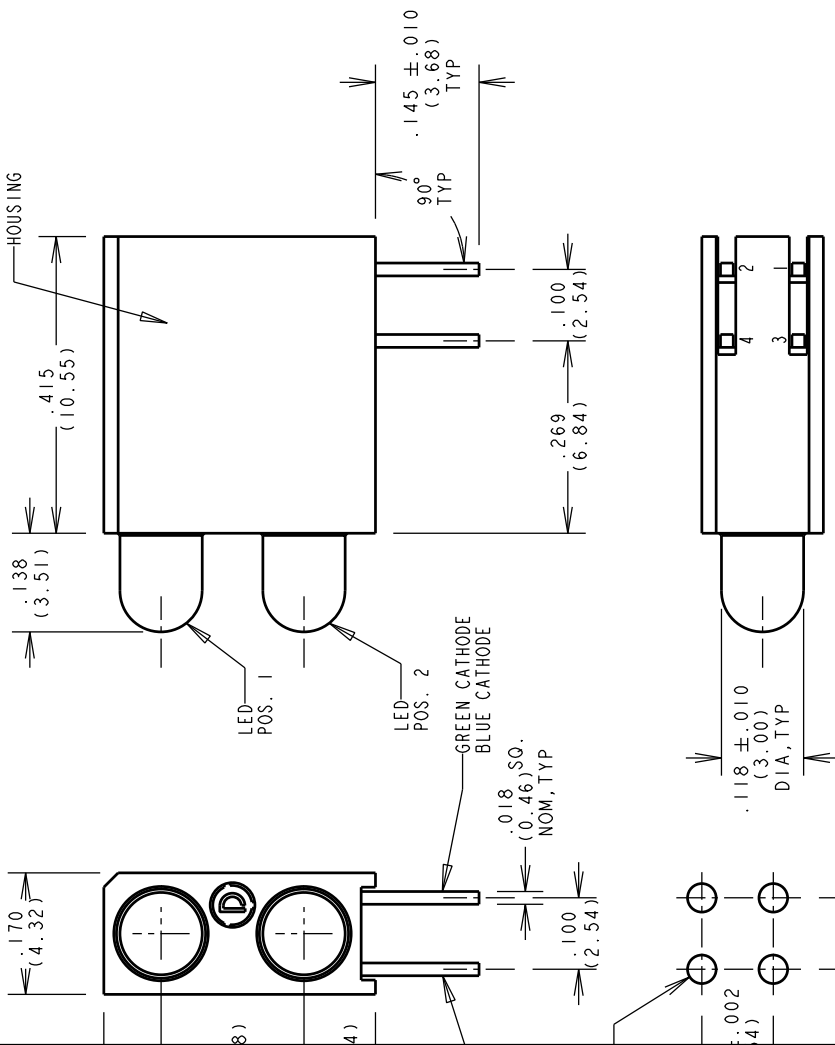
ABSOLUTE MAXIMUM RATINGS AT 25°C AMBIENT

POWER DISSIPATION	100 mW
DERATE LINEALLY FROM 50 °C	40 mA/°C
CONTINUOUS FORWARD CURRENT	30 mA
PEAK FORWARD CURRENT (10 ms PULSE WIDTH, 1/10 DUTY)	120 mA
PEAK REVERSE VOLTAGE	5 V
LEAD SOLDERING TEMPERATURE, 6 SEC., 1/16" FROM BASE	260 °C
OPERATING TEMPERATURE	-55 to +100°C
STORAGE TEMPERATURE	-55 to +100°C

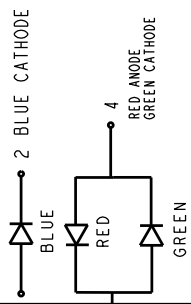
OPERATING CHARACTERISTICS AT 25 °C AMBIENT

LED CHARACTERISTICS	COLOR	MIN	TYP	MAX	UNITS	TEST OPERATIONS
LUMINOUS INTENSITY	GREEN RED	3.7 2.5	10.0 4.7		mc'd	I _f = 10mA
FORWARD VOLTAGE	GREEN RED		2.1 2.0	2.8	V	I _f = 20mA
REVERSE CURRENT	GREEN RED			100	µA	V _r = 5 V
PEAK WAVELENGTH	GREEN RED		565 635		nm	I _f = 20 mA
2 = 1/2 - INTENSITY ANGLE	GREEN RED		60		DEGREES	I _f = 20mA
CAPACITANCE	GREEN RED		35 20		pf	V _r =0 V, I _f = 1 mhz

ATTENTION:
 OBSERVE PRECAUTIONS FOR
 HANDLING ELECTROSTATIC
 SENSITIVE DEVICES



UNDED PC BOARD HOLE PATTERN



TOP POSITION (LED POS 1)

OPERATING CHARACTERISTICS AT 25 °C AMBIENT			
CHARACTERISTICS	MIN	TYP	MAX
LUMINOUS INTENSITY	7.1	12.5	18.0
FORWARD VOLTAGE	462	3.5	4.1
PEAK EMISSION WAVELENGTH		465	468
VIEW ANGLE 2 1/2		428	70

25°C AMBIENT	BLUE	UNITS
	90	mW
	20	mA
	-44	mA/°C
	5	V
	260	°C
	-55 to +100	°C
	-55 to +100	°C

THIS DRAWING AND THE CONTENTS HEREIN ARE CONFIDENTIAL AND THE SOLE PROPERTY OF DIALIGHT. REPRODUCTION OF THIS DRAWING OR CONSTRUCTION OF ANY PARTS WITHIN THIS DRAWING ARE FORBIDDEN WITHOUT THE WRITTEN CONSENT OF DIALIGHT.

SCALE: 5:1
 ALL DIM'S IN: INCHES (MM)
 TOLERANCES: UNLESS OTHERWISE SPECIFIED

DRAWING NUMBER: C-17439
 REV: A

TITLE: CBI - 3MM BI-LEVEL
 MATERIAL: RoHS COMPLIANT

FINISH: FSCM 83330
 SHEET 1 OF 1 FAMILY TABLE:

Dialight
 1501 ROUTE 34 SOUTH
 FARMINGDALE, NJ 07727