

## Excellent Integrated System Limited

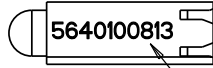
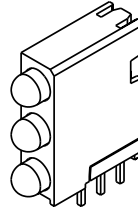
Stocking Distributor

Click to view price, real time Inventory, Delivery & Lifecycle Information:

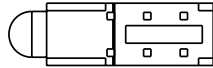
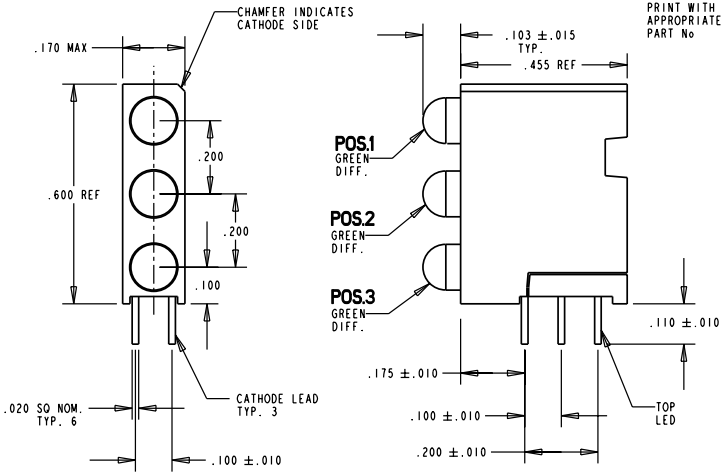
[Dialight](#)  
[5640100813F](#)

For any questions, you can email us directly:  
[sales@integrated-circuit.com](mailto:sales@integrated-circuit.com)

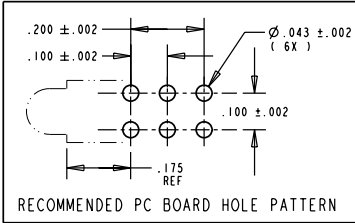
REV.	ECN NO.	REVISIONS	DRN.	CHK.	APP.	DATE
A		NEW RELEASE	TC	DC	N.O.	3-24-99
B		REORIENTED PRINTING.	TC			



LEGEND AREA  
 PRINT WITH APPROPRIATE PART No



NOTES:  
 1- LEADS TO FIT INTO HOLES SPACED AS PER HOLE PATTERN.  
 2- LED LEAD DIMENSIONS SHOWN ARE MEASURED AT HOUSING EXIT  
 3- DIALIGHT PART NUMBER 564-0100-813.



ABSOLUTE MAXIMUM RATING AT 25°C AMBIENT		UNITS	GREEN DIFF.
POWER DISSIPATION		mW	100
DERATE LINEARLY FROM 50°C		mA/°C	0.4
CONTINUOUS FORWARD CURRENT		mA	30
PEAK FORWARD CURRENT (1/10 DUTY CYCLE, 0.1 ms PULSE WIDTH)		mA	120
LEAD SOLDERING TEMPERATURE, 5 SEC., 1/16" FROM BODY		°C	260
OPERATING TEMPERATURE		°C	-55 TO 100
STORAGE TEMPERATURE		°C	-55 TO 100

LED COLOR =						
OPERATING CHARACTERISTICS AT 25°C AMBIENT						
CHARACTERISTICS	LED COLOR	MIN	TYP	MAX	UNITS	TEST CONDITIONS
LUMINOUS INTENSITY	GREEN DIFF.	4.7	12.6		mcd	I <sub>r</sub> = 10 mA
FORWARD VOLTAGE	GREEN DIFF.		2.1	2.8	V	I <sub>r</sub> = 20 mA
REVERSE CURRENT	GREEN DIFF.			100	µA	V <sub>r</sub> = 5 V
PEAK WAVELENGTH	GREEN DIFF.		565		nm	
VIEWING ANGLE	GREEN DIFF.		60		Degree	
CAPACITANCE	GREEN DIFF.		35		pf	V <sub>r</sub> = 0, f = 1 MHz

THIS DRAWING AND THE CONTENTS HEREIN ARE CONFIDENTIAL AND THE SOLE PROPERTY OF DIALIGHT. REPRODUCTION OF THIS DRAWING OR CONSTRUCTION OF ANY PARTS WITHIN THIS DRAWING ARE FORBIDDEN WITHOUT THE WRITTEN CONSENT OF DIALIGHT.		
SCALE 4:1	DRAWING NUMBER	REV
ALL DIM'S IN: INCHES	C-16476	B
TOLERANCES: UNLESS OTHERWISE SPECIFIED	TITLE STANDARD 3X1 CBI BLOCK	
FRACTIONS: ±1/64	MATERIAL	
DECIMALS (.XX): ±.020	Dialight	
DECIMALS (.XXX): ±.015	1813 ATLANTIC AVE. MANASQUAN, N. J. 08736	
ANGLES: ±3°	FSCM 83330	
FINISH:	SHEET OF	FAMILY TABLE: