

Excellent Integrated System Limited

Stocking Distributor

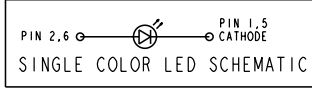
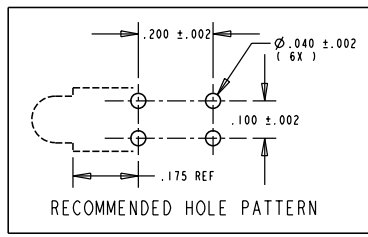
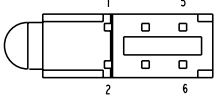
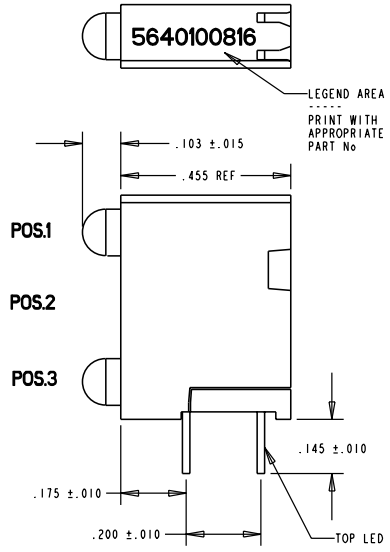
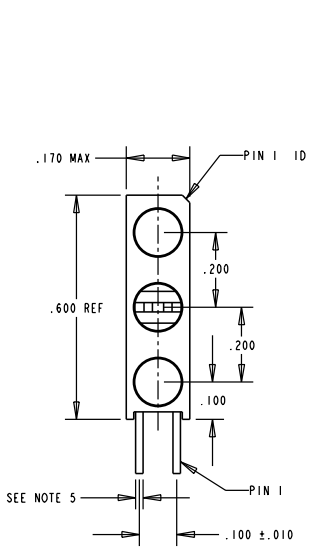
Click to view price, real time Inventory, Delivery & Lifecycle Information:

[Dialight](#)
[5640100816F](#)

For any questions, you can email us directly:
sales@integrated-circuit.com

REV.	ECN NO.	REVISIONS	DRN.	CKD.	APP.	DATE
A		NEW RELEASE	AV			

PART NUMBER and LEGEND	LED COLOR		
	POSITION 1	POSITION 2	POSITION 3
564-0100-816	GREEN DIFFUSED	** BLANK **	ORANGE DIFFUSED



- NOTES:
- 1- THIS PRODUCT USES SPECIAL BIN OF GREEN LED FOR VOLTAGE RANGE
 - 2- LEADS TO FIT INTO HOLES SPACED AS PER HOLE PATTERN
 - 3- LEADS TO BE FREE OF DEFORMATION AFTER BENDING AND CUTTING
 - 4- LED LEAD DIMENSIONS SHOWN ARE MEASURED AT HOUSING EXIT.
 - 5- .018 SQ = ORANGE
.018 X .016 = GREEN
 - 6- DIALIGHT PART NUMBER = 564-0100-816

OPERATING CHARACTERISTICS AT 25°C AMBIENT						
CHARACTERISTICS		MIN	TYP	MAX	UNITS	TEST CONDITIONS
LUMINOUS INTENSITY	GREEN	4.7	12.6		mcd	I F = 10 mA
	ORANGE	3.4	7.0			
FORWARD VOLTAGE	GREEN	1.9		2.2	V	I F = 10 mA
	ORANGE	1.5	2.2	3.0		
REVERSE CURRENT	GREEN			100	µA	V R = 5 V
	ORANGE			100		
PEAK WAVELENGTH	GREEN		565		nm	
	ORANGE		600			
VIEWING ANGLE	GREEN		60		Degree	
	ORANGE		60			
CAPACITANCE	GREEN		35		pf	V F = 0, f = 1 MHz
	ORANGE		4			

ABSOLUTE MAXIMUM RATING AT 25°C AMBIENT			GREEN	ORANGE	UNITS
POWER DISSIPATION			100	135	mW
DERATE LINEARLY FROM 50°C			0.4	0.5	mW/°C
LEAD SOLDERING TEMPERATURE, 5 SEC., 1/16" FROM BODY			260		°C
OPERATING TEMPERATURE			-55 TO 100		°C
STORAGE TEMPERATURE			-55 TO 100		°C

THIS DRAWING AND THE CONTENTS HEREIN ARE CONFIDENTIAL AND THE SOLE PROPERTY OF DIALIGHT. REPRODUCTION OF THIS DRAWING OR CONSTRUCTION OF ANY PARTS WITHIN THIS DRAWING ARE FORBIDDEN WITHOUT THE WRITTEN CONSENT OF DIALIGHT.

SCALE 4:1

ALL DIMS IN: INCHES	DRAWING NUMBER	REV
TOLERANCES: UNLESS OTHERWISE SPECIFIED	C-16691	A
FRACTIONS: ±1/64	TITLE	STANDARD 3X1 CBI BLOCK
DECIMALS (.XX): ±.020	MATERIAL	
DECIMALS (.XXXX): ±.015		
ANGLES: ±3°		
FINISH:		
FSCM 83330	SHEET OF	FAMILY TABLE:

Dialight 1913 ATLANTIC AVE. MANASQUAN, N.J. 08736