

Excellent Integrated System Limited

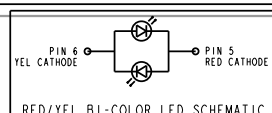
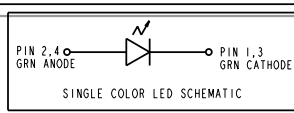
Stocking Distributor

Click to view price, real time Inventory, Delivery & Lifecycle Information:

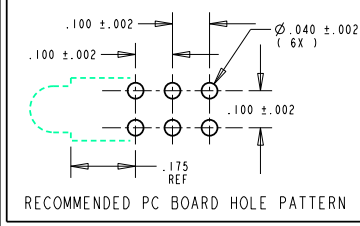
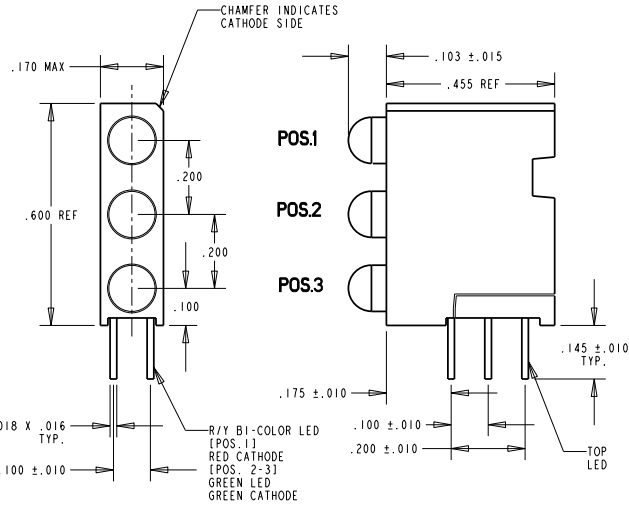
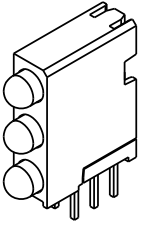
[Dialight](#)
[5640700822F](#)

For any questions, you can email us directly:
sales@integrated-circuit.com

PART NUMBER and LEGEND	LED-COLOR		
	POSITION 1	POSITION 2	POSITION 3
564-0700-822F	RED / YELLOW	GREEN DIFFUSED	GREEN DIFFUSED



REV	ECN NO	REVISIONS	DRN	CKD	APP	DATE
A		NEW RELEASE	TC			



OPERATING CHARACTERISTICS AT T_A = 25°C

SYMBOL	PARAMETER	COLOR	MIN	TYP	MAX	UNITS	TEST COND.
V _F	FORWARD VOLTAGE	GREEN		2.1	2.8	V	I _F : 20 mA
		RED		2.0	2.8		
		YELLOW		2.1	2.8		
I _R	REVERSE CURRENT	GREEN			100	µA	V _R : 5 V
		RED					
		YELLOW					
λ _{PEAK}	PEAK WAVELENGTH	GREEN		565		nm	MEASURED AT PEAK
		RED		630			
		YELLOW		585			
I _V	LUMINOUS INTENSITY	GREEN	4.7	12.6		mc d	I _F : 10 mA
		RED	1.7	5.6			
		YELLOW	1.7	5.6			I _F : 20 mA
2θ _{1/2}	VIEWING ANGLE	GREEN		60		(°)	
		RED		80		deg.	
		YELLOW					

ABSOLUTE MAXIMUM RATINGS AT 25°C

	GREEN	RED	YELLOW	UNITS
POWER DISSIPATION	100	100	60	mW
DERATE LINEARLY FROM 50°C	0.4	0.4	0.25	mW/°C
CONTINUOUS FORWARD CURRENT	30	30	20	mA
PEAK FORWARD CURRENT	120	120	80	mA
REVERSE VOLTAGE	5	5	5	V
LEAD SOLDERING TEMPERATURE, 5 SEC., 1/16" FROM BODY				260 °C
OPERATING AND STORAGE TEMPERATURE				-55 TO +100 °C

NOTES:

- LEADS TO FIT INTO HOLES SPACED AS PER HOLE PATTERN
- PIN NUMBERS FOR REFERENCE ONLY, DESIGNATION NON-EXISTENT ON PARTS.
- LEADS TO BE FREE OF DEFORMATION AFTER BENDING AND CUTTING
- LED LEAD DIMENSIONS SHOWN ARE MEASURED AT HOUSING EXIT
- DIALIGHT PART NUMBER: 564-0700-822F
- THIS ASSEMBLY CONTAINS ELECTROSTATIC DISCHARGE SENSITIVE DEVICES (ESDS). MAINTAIN ALL PRECAUTIONARY MEASURES DURING ASSEMBLY, HANDLING AND STORAGE IN ACCORDANCE WITH IPC-A-610.



ATTENTION:
OBSERVE PRECAUTIONS FOR HANDLING ELECTROSTATIC SENSITIVE DEVICES

RoHS Compliant 564-0700-822F
Part Numbers with the "F" suffix ending are RoHS Compliant.
Packaging is marked with "RoHS Compliant" label or equivalent markings.
Parts can be wave soldered, dip soldered or hand soldered using typical lead-free soldering process with max 260°C temp. for 5 sec.

THIS DRAWING AND THE CONTENTS HEREIN ARE CONFIDENTIAL AND THE SOLE PROPERTY OF DIALIGHT. REPRODUCTION OF THIS DRAWING OR CONSTRUCTION OF ANY PARTS WITHIN THIS DRAWING ARE FORBIDDEN WITHOUT THE WRITTEN CONSENT OF DIALIGHT.	
SCALE: DRAWING SCALE	DRAWING NUMBER
ALL DIM'S IN: INCHES (MM)	C-17469
TOLERANCES: UNLESS OTHERWISE SPECIFIED	REV
FRACTIONS: ±1/64	A
DECIMALS (.XXX): ±.01	TITLE
DECIMALS (.XXXX): ±.005	3mm TRI-LEVEL R/Y,G,G RoHS COMPLIANT
ANGLES: ±1°	MATERIAL
FINISH:	
FSCM 83330	Dialight 1501 ROUTE 34 SOUTH, FARMINGDALE, NJ 07727
	SHEET 1 OF 1 FAMILY TABLE: