

## Excellent Integrated System Limited

Stocking Distributor

Click to view price, real time Inventory, Delivery & Lifecycle Information:

[Dialight](#)  
[5680016811F](#)

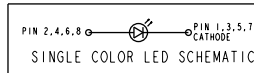
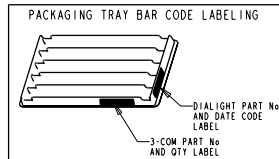
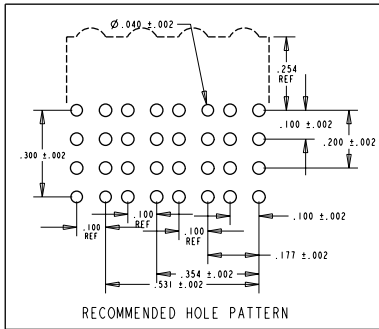
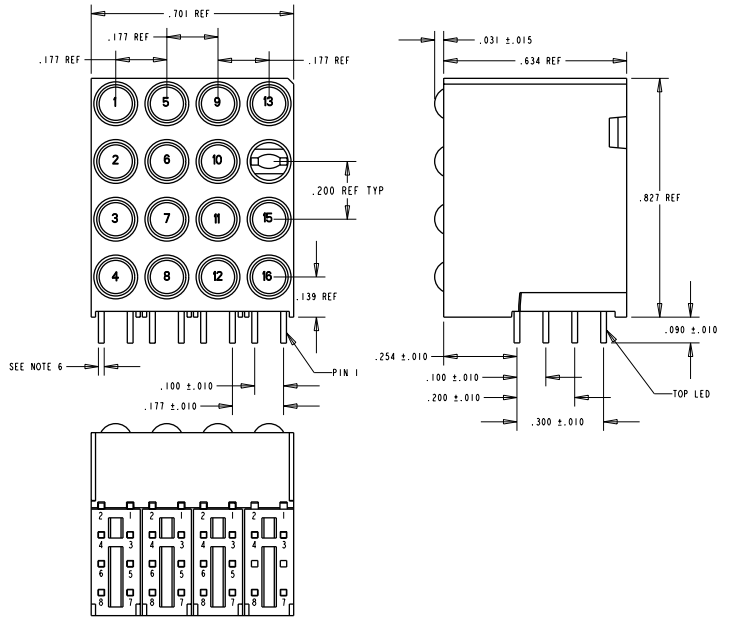
For any questions, you can email us directly:  
[sales@integrated-circuit.com](mailto:sales@integrated-circuit.com)

POSITION	COLOR	POSITION	COLOR	POSITION	COLOR	POSITION	COLOR
1	YELLOW	5	YELLOW	9	YELLOW	13	YELLOW
2	GREEN	6	GREEN	10	GREEN	14	** BLANK **
3	YELLOW	7	YELLOW	11	YELLOW	15	YELLOW
4	GREEN	8	GREEN	12	GREEN	16	GREEN

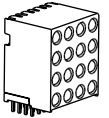
REV.	TECH. NO.	REVISIONS	DRN.	CKD.	APP.	DATE
A		NEW RELEASE	AV	DC	NO	2-29-00
B		ADD PACKAGING INFO - ADD 3COM PART NO TO NOTES	AV			

OPERATING CHARACTERISTICS AT 25°C AMBIENT						
CHARACTERISTICS		MIN	TYP	MAX	UNITS	TEST CONDITIONS
LUMINOUS INTENSITY	GREEN	4.7	12.6		mcd	$I_f = 10 \text{ mA}$
	YELLOW	7.4	10.0			
FORWARD VOLTAGE	GREEN	2.1	2.8		V	$I_f = 20 \text{ mA}$
	YELLOW	2.1	2.8			
REVERSE CURRENT	GREEN			100	$\mu\text{A}$	$V_r = 5 \text{ V}$
	YELLOW			100		
PEAK WAVELENGTH	GREEN		565		nm	
	YELLOW		585			
VIEWING ANGLE	ALL		60		Degree	
	GREEN		35			
CAPACITANCE	GREEN				pf	$V_r = 0, f = 1 \text{ MHz}$
	YELLOW					

ABSOLUTE MAXIMUM RATING AT 25°C AMBIENT				GREEN	YELLOW	UNITS
POWER DISSIPATION			100	60		mW
DERATE LINEARLY FROM 50°C			0.4	0.25		mA/°C
CONTINUOUS FORWARD CURRENT			30	20		mA
PEAK FORWARD CURRENT (1/10 DUTY CYCLE, 0.1 ms PULSE WIDTH)			120	80		mA
LEAD SOLDERING TEMPERATURE, 5 SEC., 1/16" FROM BODY			260			°C
OPERATING TEMPERATURE			-55 TO 100			°C
STORAGE TEMPERATURE			-55 TO 100			°C



- NOTES:
- 3-COM PART NUMBER = 7320-455-023 (REF)
  - LEADS TO FIT INTO HOLES SPACED AS PER HOLE PATTERN
  - LEADS TO BE FREE OF DEFORMATION AFTER BENDING AND CUTTING
  - LED LEAD DIMENSIONS SHOWN ARE MEASURED AT HOUSING EXIT
  - PIN NUMBERS ARE FOR REFERENCE ONLY AND DO NOT APPEAR ON PART
  - PACKAGING = BLOCKS ARE PLACED IN CLEAR ANTISTATIC TRAY  
80 BLOCKS/TRAY = 5 TRAYS/BOX = 400 BLOCKS/BOX
  - LED LEAD THICKNESS = .018 X .018 = ALL LEADS
  - DIALIGHT PART NUMBER = 568-0016-811



THIS DRAWING AND THE CONTENTS HEREIN ARE CONFIDENTIAL AND THE SOLE PROPERTY OF DIALIGHT. REPRODUCTION OF THIS DRAWING OR CONSTRUCTION OF ANY PARTS WITHIN THIS DRAWING ARE FORBIDDEN WITHOUT THE WRITTEN CONSENT OF DIALIGHT.	
SCALE: 1:1	DRAWING NUMBER: C-16667
REV: B	TITLE: 4X4 CBI ARRAY BLOCK
MATERIAL:	FINISH:
FSC: 83330	1913 ATLANTIC AVE. MANASQUAN, N.J. 08736
SHEET OF:	FAMILY TABLES: