

Excellent Integrated System Limited

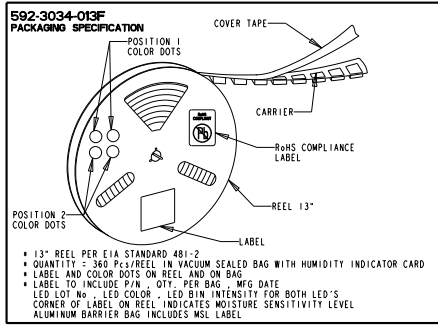
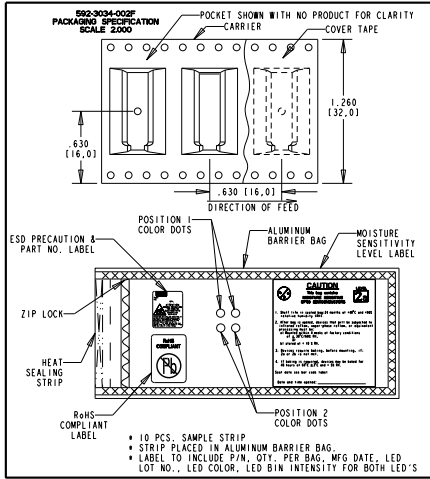
Stocking Distributor

Click to view price, real time Inventory, Delivery & Lifecycle Information:

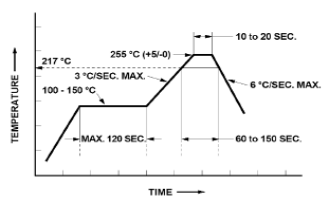
[Dialight](#)
[5923034002F](#)

For any questions, you can email us directly:
sales@integrated-circuit.com

REV.	ECN NO.	REVISIONS	DRN. CKD.	APP.	DATE
A		NEW RELEASE	TWC		

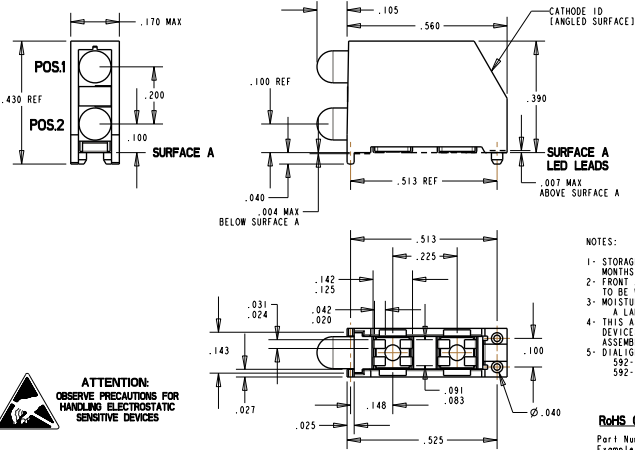


PART NUMBER	POSITION 1	POSITION 2	MOISTURE LEVEL
592-3034-002F	RED/GREEN	RED/BLUE	2a
592-3034-013F	RED/GREEN	RED/BLUE	2a

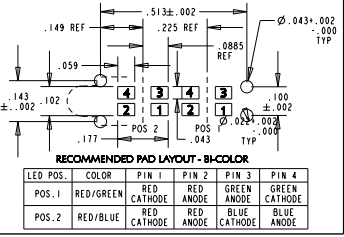


LED CHARACTERISTICS	COLOR	MIN.	TYP.	MAX.	UNITS	TEST CONDITIONS
LUMINOUS INTENSITY	RED	TBD	TBD	TBD	mc/d	I _r = 20 mA
	GREEN	TBD	TBD	TBD		
FORWARD VOLTAGE	RED	2.0	2.5		V	I _r = 20 mA
	GREEN	2.0	2.5			
REVERSE CURRENT	RED	.01	10.0		mA	V _r = 5 V
	GREEN	.01	10.0			
PEAK WAVELENGTH	RED		635		nm	
	GREEN		572			
DOMINANT WAVELENGTH	RED	622	628	634	nm	
	GREEN	564	570	576		
VIEWING ANGLE (2 θ 1/2)	RED		120		DEG.	I _r = 20 mA
	GREEN		120			

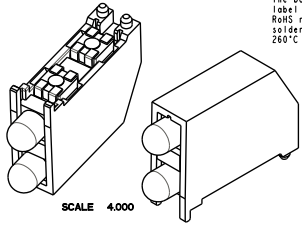
ABSOLUTE MAXIMUM RATINGS AT 25 °C AMBIENT	RED / GREEN	AlInGaP RED	GaN BLUE	UNITS
POWER DISSIPATION	95	80	90	mW
CONTINUOUS FORWARD CURRENT	30	30	20	mA
REVERSE VOLTAGE	5	12	5	mA
LEAD SOLDERING TEMPERATURE FOR 15 SEC.		260		°C
OPERATING TEMPERATURE		-40 TO +100		°C
STORAGE TEMPERATURE		-40 TO +100		°C



- NOTES:
- STORAGE OF TAPED PARTS SHALL NOT EXCEED TWELVE (12) MONTHS AFTER WHICH RE-PACKAGING IS REQUIRED
 - FRONT AND REAR TERMINALS OF EACH LED OF THE ASSEMBLY TO BE WITHIN .005 COPLANARITY
 - MOISTURE SENSITIVITY LEVEL: A LABEL WILL BE PLACED ON THE BAG
 - THIS ASSEMBLY CONTAINS ELECTROSTATIC DISCHARGE SENSITIVE DEVICES (ESDS). MAINTAIN ALL PRECAUTIONARY MEASURES DURING ASSEMBLY, HANDLING AND STORAGE IN ACCORDANCE WITH IPC-A-610.
 - DIALIGHT PART NUMBERS: 592-3034-002F (STRIP) 592-3034-013F (13" REEL)



OPERATING CHARACTERISTICS AT 25°C AMBIENT						
CHARACTERISTICS	COLOR	MIN	TYP	MAX	UNITS	TEST CONDITIONS
LUMINOUS INTENSITY	AlInGaP RED	TBD	TBD	TBD	mc/d	I _r = 20 mA
	GaN BLUE	TBD	TBD	TBD		
FORWARD VOLTAGE	AlInGaP RED	1.9	2.4		V	I _r = 20 mA
	GaN BLUE	4.0	4.1			
REVERSE CURRENT	AlInGaP RED	100	10		mA	V _r = 5 V
	GaN BLUE	10	10			
DOMINANT WAVELENGTH	AlInGaP RED	621	626	632	nm	I _r = 20 mA
	GaN BLUE	460	470	475		
PEAK EMISSION WAVELENGTH	AlInGaP RED		635		nm	I _r = 20 mA
	GaN BLUE		468			
VIEWING ANGLE 2 θ 1/2	AlInGaP RED		120		Degree	
	GaN BLUE		120			



RoHS Compliant 592-3034-002F Bi-Level Surface Mount Prism

Part Numbers with the "F" suffix ending are RoHS Compliant. Example: 592-3034-013F

The bag and reel are marked with "RoHS Compliant" label or equivalent markings. Parts can be reflow soldered per RoHS reflow profile, wave soldered, dip soldered or hand soldered using typical lead-free soldering process with max 260°C temp. for 10-20 sec.

THIS DRAWING AND THE CONTENTS HEREIN ARE CONFIDENTIAL AND THE SOLE PROPERTY OF DIALIGHT. REPRODUCTION OF THIS DRAWING OR CONSTRUCTION OF ANY PARTS WITHIN THIS DRAWING ARE FORBIDDEN WITHOUT THE WRITTEN CONSENT OF DIALIGHT.	
SCALE: 4.000	DRAWING NUMBER: C-17415
REV: A	REV: A
TOLERANCES: UNLESS OTHERWISE SPECIFIED: DIMENSIONS: DECIMALS: .001; .002; .005; .010; .020; .030; .040; .050; .060; .070; .080; .090; .100; .125; .150; .175; .200; .250; .300; .375; .500; .625; .750; .875; 1.000; 1.250; 1.500; 1.750; 2.000; 2.500; 3.000; 3.750; 4.000; 5.000; 6.000; 7.500; 10.000; 12.500; 15.000; 20.000; 25.000; 30.000; 37.500; 40.000; 50.000; 60.000; 75.000; 100.000; 125.000; 150.000; 200.000; 250.000; 300.000; 375.000; 500.000; 625.000; 750.000; 875.000; 1000.000; ANGLES: .001; .002; .005; .010; .020; .030; .040; .050; .060; .070; .080; .090; .100; .125; .150; .175; .200; .250; .300; .375; .500; .625; .750; .875; 1.000; 1.250; 1.500; 1.750; 2.000; 2.500; 3.000; 3.750; 4.000; 5.000; 6.000; 7.500; 10.000; 12.500; 15.000; 20.000; 25.000; 30.000; 37.500; 40.000; 50.000; 60.000; 75.000; 100.000; 125.000; 150.000; 200.000; 250.000; 300.000; 375.000; 500.000; 625.000; 750.000; 875.000; 1000.000	
FINISH:	Dialight
TSCM: 83330	1501 ROUTE 34 SOUTH FARMINGDALE, NJ 07127
SHEET 1 OF 1	FAMILY TABLES: