

Excellent Integrated System Limited

Stocking Distributor

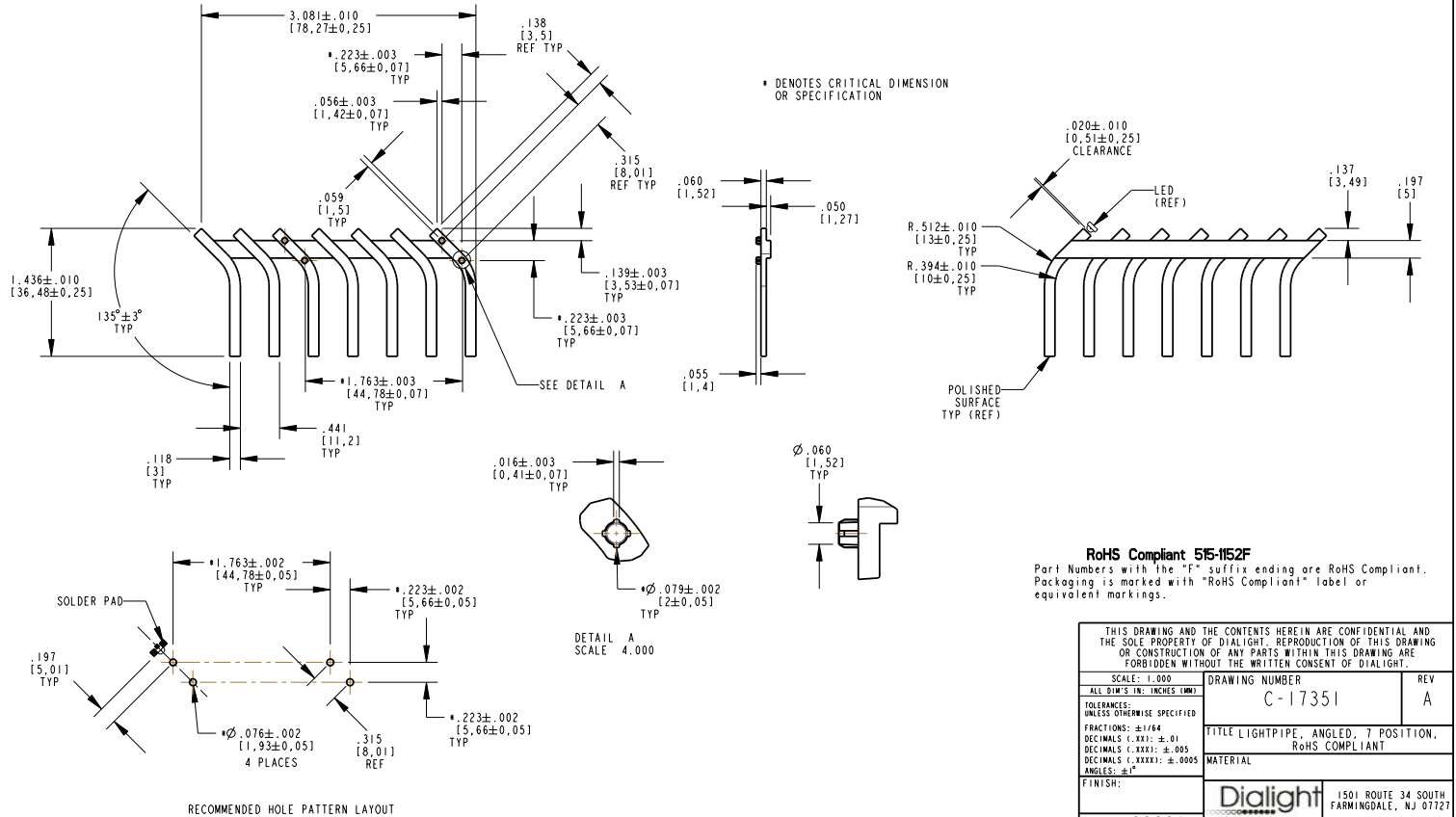
Click to view price, real time Inventory, Delivery & Lifecycle Information:

[Dialight](#)
[5151152F](#)

For any questions, you can email us directly:
sales@integrated-circuit.com

REV	ECN_NO	REVISIONS	DRN	CKD	APP	DATE
A		NEW RELEASE	TWC			

- NOTES:
 1. COMPONENT MOLDED IN A CLEAR TRANSMISSIVE POLYCARBONATE, UL 94V-0 GRADE.
 2. COMPONENT DESIGNED TO BE PRESSED INTO P.C. BOARD.
 3. DIALIGHT LIGHTPIPE PART NUMBER: 515-1152F
 4. RECOMMENDED LIGHT SOURCE: RT ANGLE 1208 PKG (.120 X .080 X .040" HIGH)
 5. 597-2751-602F FOR 20 PC SAMPLE STRIP, -607F FOR FULL REEL R/G B1-COLOR
 597-2712-602F FOR 20 PC SAMPLE STRIP, -607F FOR FULL REEL R/G/B TRI-COLOR
 6. ALL SURFACES ARE POLISHED WITH EXCEPTION OF PRESS FIT PINS.



RoHS Compliant 515-1152F

Part Numbers with the "F" suffix ending are RoHS Compliant. Packaging is marked with "RoHS Compliant" label or equivalent markings.

THIS DRAWING AND THE CONTENTS HEREIN ARE CONFIDENTIAL AND THE SOLE PROPERTY OF DIALIGHT. REPRODUCTION OF THIS DRAWING OR CONSTRUCTION OF ANY PARTS WITHIN THIS DRAWING ARE FORBIDDEN WITHOUT THE WRITTEN CONSENT OF DIALIGHT.	
SCALE: 1:1000	DRAWING NUMBER
ALL DIM'S IN: INCHES (MM)	C-17351
TOLERANCES: UNLESS OTHERWISE SPECIFIED	REV
FRACTIONS: ±1/64	A
DECIMALS (.XX): ±.01	TITLE LIGHTPIPE, ANGLED, 7 POSITION, RoHS COMPLIANT
DECIMALS (.XXX): ±.005	MATERIAL
ANGLES: ±1°	
FINISH:	Dialight 1501 ROUTE 34 SOUTH, FARMINGDALE, NJ 07727
FSCM 83330	SHEET 1 OF 1 FAMILY TABLE: