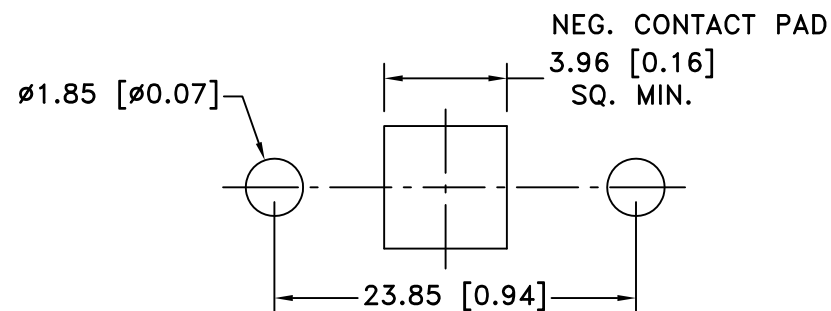
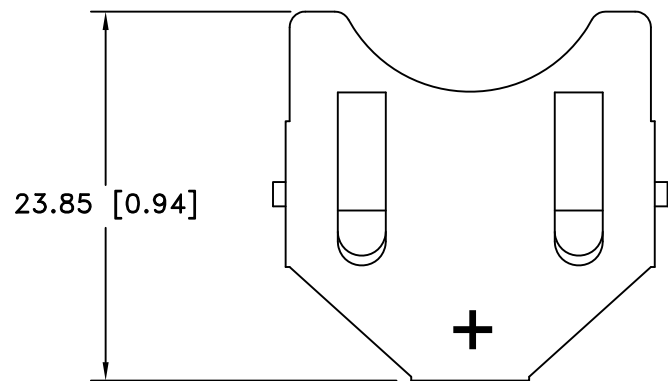
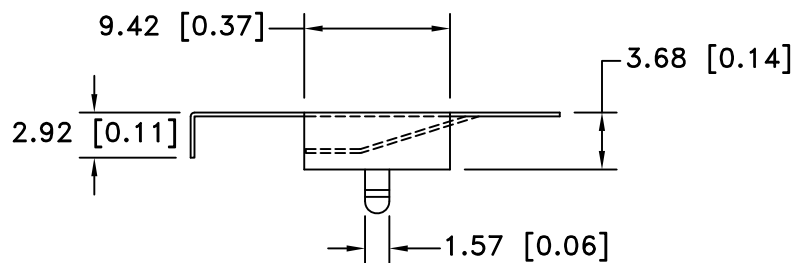
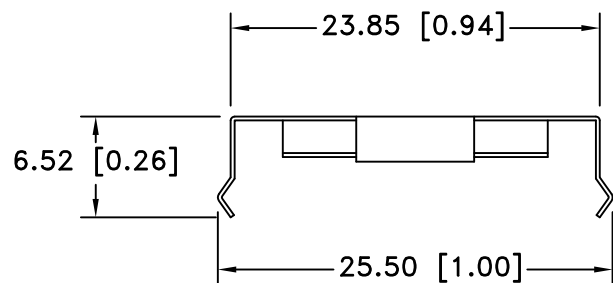


| Date | SYM | REVISION RECORD | AUTH | DR. | CK. |
|----------|-----|-----------------------------|------|------|-----|
| 1/07/06 | A | ADDED "ROHS COMPLIANT" | T.B. | B.S. | |
| 2/04/06 | B | ADDED CHAMFERS | T.B. | B.S. | |
| 11/14/14 | C | UPDATED TO ROHS 2 COMPLIANT | T.B. | B.S. | |
| | | | | | |
| | | | | | |




PCB LAYOUT



NOTES:

- MATERIAL:
0.25mm PHOSPHOR BRONZE, NICKEL PLATED.
- ROHS 2 COMPLIANT

| | | | |
|--------------------------------|---|--|--|
| Tolerance (Except as noted) |  Memory Protection Devices, Inc 200 Broad Hollow Road, Farmingdale, New York 11735 | | |
| decimal ±.5 (.020) | Scale | Drawn By B.S. | |
| Fractional ± .8 (.030) | Approved By T.B. | | |
| Angular ± 3° | Title | COIN CELL RETAINER FOR 23mm DIA. BATTERIES | |
| | Date | Drawing Number | |
| | 11/14/14 | BK-889 | |

| CELL SIZE | RETAINS BATTERY NUMBERS |
|-----------|--|
| 23mm | BR2320, CL2320, CR2320, BR2325, CR2325, DL2325, BR2330, CL2330 |