

## **Excellent Integrated System Limited**

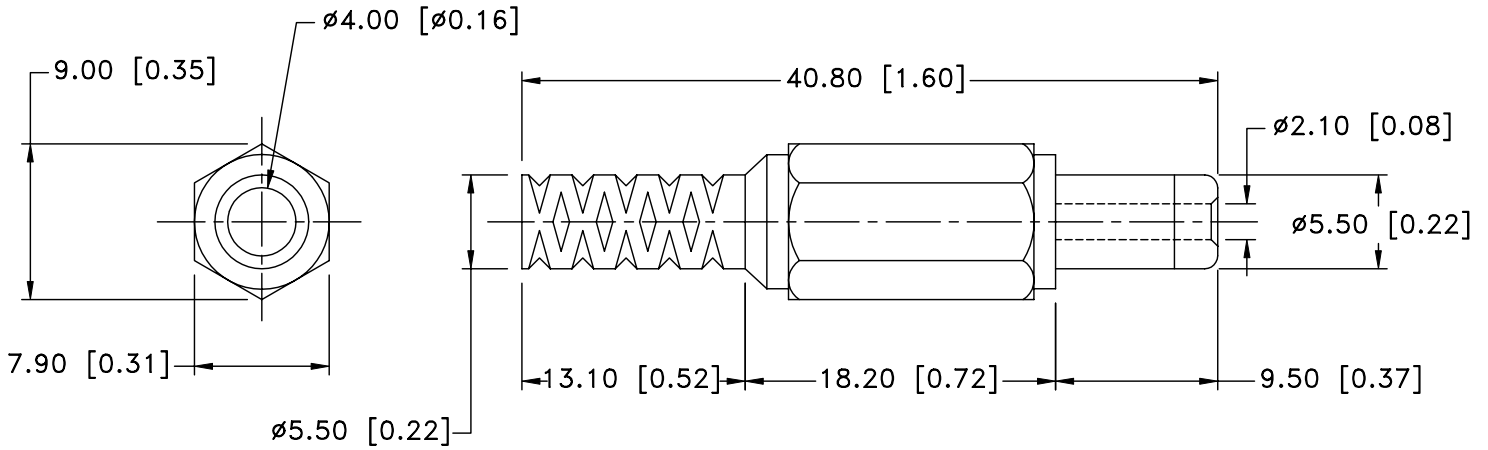
Stocking Distributor

Click to view price, real time Inventory, Delivery & Lifecycle Information:

[Memory Protection Devices](#)  
[EP501A](#)

For any questions, you can email us directly:  
[sales@integrated-circuit.com](mailto:sales@integrated-circuit.com)

Date	SYM	REVISION RECORD	AUTH	DR.	CK.
08/16/03	A	REVISED TITLE	T.B.	B.S.	




**NOTES:**

**MAX. RATING: 12V 5A.**

**MATERIAL:**

- 1) INSULATOR: ABS
- 2) PLUG: BRASS, NICKLE PLATED
- 3) COVER: PP

Tolerance (Except as noted)	 <b>Memory Protection Devices, Inc</b> 200 Broad Hollow Road, Farmingdale, New York 11735		
decimal ±.5 (.020)	Scale	Drawn By B.S. Approved By T.B.	
Fractional ± .8 (.030)	Title DC PLUG - 2.1mm MOLDED WITH STRAIN RELIEF		
Angular ± 3°	Date 08/16/03	Drawing Number EP501-A	