

## Excellent Integrated System Limited

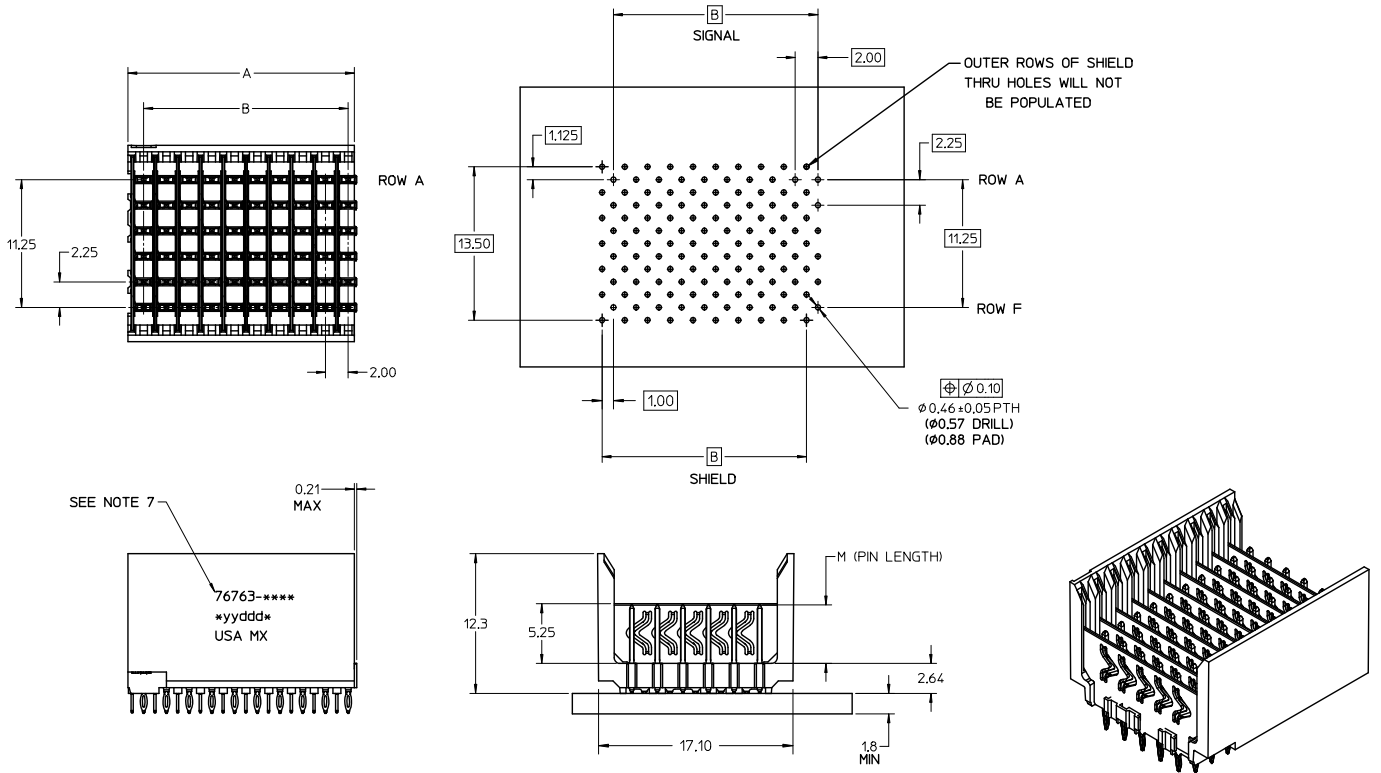
Stocking Distributor

Click to view price, real time Inventory, Delivery & Lifecycle Information:

[Molex Connector Corporation](#)  
[0767638501](#)

For any questions, you can email us directly:

[sales@integrated-circuit.com](mailto:sales@integrated-circuit.com)

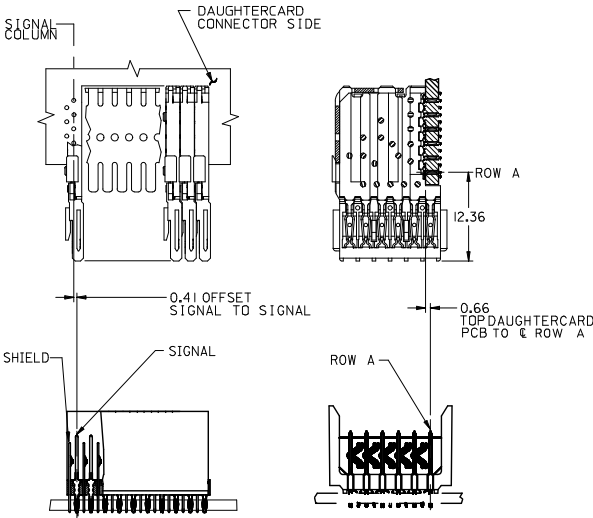


**NOTES:**

- MATERIALS:**  
HOUSING - LIQUID CRYSTAL POLYMER (LCP)  
GLASS FILLED, UL94V-0, BLACK  
SIGNAL PIN AND SHIELD - COPPER ALLOY
- FINISHES:**  
CONTACT AREA - SELECTIVE GOLD (Au)  
PCB TAILS - SELECTIVE MATTE TIN (Sn)
- THIS PART CONFORMS TO MOLEX PRODUCT SPECIFICATION PS-74031-999.
- FOR MIXED CONTACT LENGTH CONTACT MOLEX FOR AVAILABILITY.
- FOR SPECIFIC MATERIAL NUMBERS AND MATING INFORMATION REFER TO SHEET 2.
- PACKAGE PER PK-74057-003.
- ASSEMBLY WILL BE MARKED WITH P/N AND DATE CODE WITH LASER MARK ON SIDE OF HOUSING OR BY LABEL ON THE TUBE.
- MAPS (MOLEX ADVANCED PLATING SYSTEM)

UPDATE HOUSING EC NO: UCP2016-3618 DRWNSWANGOT 2016/03/21 CHKDORJAN 2016/03/21 APPR:SMILLER 2016/04/13 DESCRIPTION REV	QUALITY SYMBOLS ∇=0 ∇=0 ∇=0	GENERAL TOLERANCES (UNLESS SPECIFIED)		DIMENSION STYLE MM ONLY		SCALE 4:1	DESIGN UNITS METRIC	THIRD ANGLE PROJECTION	
		4 PLACES ± --- ± --- 3 PLACES ± --- ± --- 2 PLACES ± 0.15 ± --- 1 PLACE ± 0.25 ± --- 0 PLACE ± --- ± ---	mm INCH ± --- ± --- ± --- ± --- ± --- ± --- ± --- ± ---	DRAWN BY JJONIAK	DATE 2008/07/09	CHECKED BY JJONIAK	DATE 2008/07/09	TITLE VHDM H-SERIES 6 ROW OPEN END BACKPLANE SALES DRAWING	
ANGULAR ±1/2° DRAFT WHERE APPLICABLE MUST REMAIN WITHIN DIMENSIONS		MATERIAL NO. SEE SHT.2		APPROVED BY SMILLER		DATE 2010/03/09		DOCUMENT NO. SD-76763-001	SHEET NO. 1 OF 2
THIS DRAWING CONTAINS INFORMATION THAT IS PROPRIETARY TO MOLEX INCORPORATED AND SHOULD NOT BE USED WITHOUT WRITTEN PERMISSION									

13 12 11 10 9 8 7 6 5 4 3 2 1



LEAD FREE CHART

PART NUMBER	COLUMN	NUMBER OF SIGNAL PIN	NUMBER OF SHIELD	A	B	M	GOLD THICKNESS MICROMETER	TIN THICKNESS MICROMETER
76763-6001	10	60	10	20.00	18.00	4.75	0.25 MAPS	0.76-152
76763-9004							0.76	
76763-9006							1.27	
76763-4501							0.25 MAPS	
76763-9501	15	90	15	30.00	28.00	4.25	0.76	0.76-152
76763-9506							1.27	
76763-7001	25	150	25	50.00	48.00	6.25	0.25 MAPS	0.76-152
76763-8501							0.76	
76763-8506							1.27	
76763-4002							0.25 MAPS	
76763-9002	10	60	10	20.00	18.00	4.75	0.76	0.76-152
76763-9007							1.27	
76763-4502	15	90	15	30.00	28.00	4.25	0.25 MAPS	0.76-152
76763-9502							0.76	
76763-7002	25	150	25	50.00	48.00	6.25	0.25 MAPS	0.76-152
76763-8502							0.76	
76763-8507							1.27	
76763-6003							0.25 MAPS	
76763-9003	10	60	10	20.00	18.00	4.75	0.76	0.76-152
76763-9008							1.27	
76763-4503	15	90	15	30.00	28.00	4.25	0.25 MAPS	0.76-152
76763-9503							0.76	
76763-9508	25	150	25	50.00	48.00	6.25	1.27	0.76-152
76763-7003							0.25 MAPS	
76763-8503	10	60	10	20.00	18.00	4.75	0.76	0.76-152
76763-8508							1.27	
76763-6004	15	90	15	30.00	28.00	4.25	0.25 MAPS	0.76-152
76763-9004							0.76	
76763-9009	25	150	25	50.00	48.00	6.25	1.27	0.76-152
76763-4504							0.25 MAPS	
76763-9504	10	60	10	20.00	18.00	4.75	0.76	0.76-152
76763-9509							1.27	
76763-7004	15	90	15	30.00	28.00	4.25	0.25 MAPS	0.76-152
76763-8504							0.76	
76763-8509	25	150	25	50.00	48.00	6.25	1.27	0.76-152
76763-9509							0.25 MAPS	

LEAD FREE (FORMERLY TIN/LEAD) CHART

PART NUMBER	COLUMN	NUMBER OF SIGNAL PIN	NUMBER OF SHIELD	A	B	M	GOLD THICKNESS MICROMETER	TIN THICKNESS MICROMETER
76763-1001	10	60	10	20.00	18.00	4.75	0.76	0.76-152
76763-1006							1.27	
76763-1501							0.76	
76763-1506							1.27	
76763-2501	25	150	25	50.00	48.00	6.25	0.76	0.76-152
76763-2506							1.27	
76763-1002	10	60	10	20.00	18.00	4.75	0.76	0.76-152
76763-1007							1.27	
76763-1502	15	90	15	30.00	28.00	4.25	0.76	0.76-152
76763-1507							1.27	
76763-2502	25	150	25	50.00	48.00	6.25	0.76	0.76-152
76763-2507							1.27	
76763-1003	10	60	10	20.00	18.00	4.75	0.76	0.76-152
76763-1008							1.27	
76763-1503	15	90	15	30.00	28.00	4.25	0.76	0.76-152
76763-1508							1.27	
76763-2503	25	150	25	50.00	48.00	6.25	0.76	0.76-152
76763-2508							1.27	
76763-1004	10	60	10	20.00	18.00	4.75	0.76	0.76-152
76763-1009							1.27	
76763-1504	15	90	15	30.00	28.00	4.25	0.76	0.76-152
76763-1509							1.27	
76763-2504	25	150	25	50.00	48.00	6.25	0.76	0.76-152
76763-2509							1.27	

MATERIAL NUMBER ASSIGNMENT

76763-\*\*-\*\*

SEE TABLES

- NUMBER OF COLUMNS/PLATING  
 10 = 10 COLUMN MATTE TIN (FORMERLY TIN/LEAD)  
 15 = 15 COLUMN MATTE TIN (FORMERLY TIN/LEAD)  
 25 = 25 COLUMN MATTE TIN (FORMERLY TIN/LEAD)  
 60 = 10 COLUMN MATTE TIN (MAPS)  
 65 = 15 COLUMN MATTE TIN (MAPS)  
 70 = 25 COLUMN MATTE TIN (MAPS)  
 90 = 10 COLUMN MATTE TIN  
 95 = 15 COLUMN MATTE TIN  
 85 = 25 COLUMN MATTE TIN

SEE SHEET 1 EC NO: UCP2016-3618 DRW: WANGDI 2016/03/21 CHK: DORJAN 2016/03/21 APPR: MILLER 2016/04/13	QUALITY SYMBOLS ∇=0 ∇=0 ∇=0	GENERAL TOLERANCES (UNLESS SPECIFIED) mm INCH 4 PLACES ± --- ± --- 3 PLACES ± --- ± --- 2 PLACES ± 0.15 ± --- 1 PLACE ± 0.25 ± --- 0 PLACE ± --- ± ---	DIMENSION STYLE MM ONLY	SCALE 2:1	DESIGN UNITS METRIC	THIRD ANGLE PROJECTION	
		DRAWN BY JJONIAK DATE 2008/07/09	CHECKED BY JJONIAK DATE 2008/07/09	APPROVED BY MILLER DATE 2010/03/09	TITLE VHDM H-SERIES 6 ROW OPEN END BACKPLANE SALES DRAWING		
		MATERIAL NO. SEE TABLE		DOCUMENT NO. SD-76763-001		SHEET NO. 2 OF 2	
		DRAFT WHERE APPLICABLE MUST REMAIN WITHIN DIMENSIONS					

molex

THIS DRAWING CONTAINS INFORMATION THAT IS PROPRIETARY TO MOLEX INCORPORATED AND SHOULD NOT BE USED WITHOUT WRITTEN PERMISSION

12 11 10 9 8 7 6 5 4 3 2 1