



Distributor of ITT Cannon, LLC: Excellent Integrated System Limited

Datasheet of KPT06E14-5PDZ - CONN PLUG 5POS W/PIN INLINE

Contact us: sales@integrated-circuit.com Website: www.integrated-circuit.com

Excellent Integrated System Limited

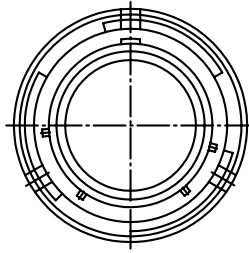
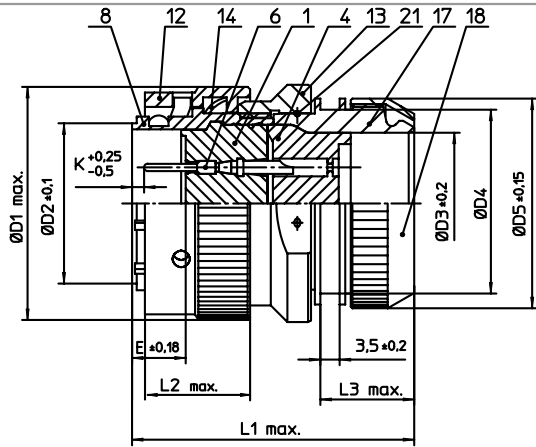
Stocking Distributor

Click to view price, real time Inventory, Delivery & Lifecycle Information:

[ITT Cannon, LLC](#)
[KPT06E14-5PDZ](#)

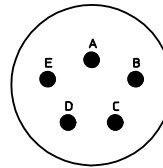
For any questions, you can email us directly:

sales@integrated-circuit.com



| NO. | MASSE / DIMENSION |
|-----|-------------------|
| D1 | 30.1 |
| D2 | 18.2 |
| D3 | 15.45 |
| D4 | 22.2 |
| D5 | 25 |
| E | 8.02 |
| K | 2.16 |
| L1 | 49 |
| L2 | 21.4 |
| L3 | 18 |

| NO. | BESCHREIBUNG / DESCRIPTION |
|-----|--|
| 1 | ISOLIERKÖRPER STIFT / INSULATOR PIN |
| 4 | DICHTKÖRPER / GROMMET |
| 6 | KONTAKT STIFT / CONTACT PIN |
| 8 | GEHÄUSE / RECEPTACLE |
| 12 | ÜBERWURFMUTTER / COUPLING NUT |
| 13 | ÜBERWURFMUTTER F. ENDGEH. / COUPLING NUT |
| 14 | WELLFEDER / WASHER |
| 17 | ADAPTER / ADAPTER |
| 18 | KLEMM-MUTTER / CLAMP NUT |
| 21 | DRAHT / FIXING WIRE |



Note: Due to an automatic nomenclature system, numbers generated may not be sequential.
Specification and Dimensions subject to change
Drawings illustrate normal insulator positioning

| Material Specification: | |
|-------------------------|--|
| Shell Material: | Aluminium alloy |
| Shell Plating: | Olive drab chromate over cadmium plating |
| Insulator Material: | Polychloroprene |
| Contact Material: | Copper alloy, gold plated |
| Contact Plating: | Copper alloy, gold plated |

all dimensions are in mm
Dimensions without tolerance indications are general tolerances in acc. with DIN7168m

drawing for
CUSTOMER



description KPT06E145PDZ
Straight plug
Endbell for shielding braids and shrink boots
Solder Cup / Pin / Layout: 14-5

© All rights reserved. Reproduction or issue to third in any form
whenever is only permitted with written authorization of ITT Cannon

page 1/1
revision 1013.5, Jul 16