

Excellent Integrated System Limited

Stocking Distributor

Click to view price, real time Inventory, Delivery & Lifecycle Information:

[Phoenix Contact](#)
[1707056](#)

For any questions, you can email us directly:

sales@integrated-circuit.com

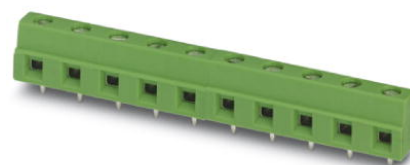


Extract from the online catalog

GMKDSN 1,5/ 5-7,62


Order No.: 1707056

The illustration shows an 10-position version



<http://eshop.phoenixcontact.de/phoenix/treeViewClick.do?UID=1707056>

PC terminal block, Nominal current: 16 A, Nom. voltage: 400 V, Pitch: 7.62 mm, Number of positions: 5, Type of connection: Screw connection, Mounting: Soldering, Conductor/PCB connection direction: 0 °, Color: green, The article can be aligned to create different nos. of positions!

| Commercial data | |
|--------------------------|--|
| GTIN (EAN) |  4 017918 023393 |
| sales group | E030 |
| Pack | 50 pcs. |
| Customs tariff | 85369010 |
| Catalog page information | Page 87 (CC-2009) |

Product notes

WEEE/RoHS-compliant since:
01/01/2003



<http://www.download.phoenixcontact.com>
Please note that the data given here has been taken from the online catalog. For comprehensive information and data, please refer to the user documentation. The General Terms and Conditions of Use apply to Internet downloads.

Technical data

| Dimensions / positions | |
|------------------------|---------|
| Length | 8.1 mm |
| Pitch | 7.62 mm |

GMKDSN 1,5/ 5-7,62 Order No.: 1707056

<http://eshop.phoenixcontact.de/phoenix/treeViewClick.do?UID=1707056>

| | |
|------------------------|------------|
| Dimension a | 30.48 mm |
| Number of positions | 5 |
| Pin dimensions | 0,5 x 1 mm |
| Hole diameter | 1.3 mm |
| Screw thread | M3 |
| Tightening torque, min | 0.5 Nm |
| Tightening torque max | 0.6 Nm |

Technical data

| | |
|-------------------------------------|---------------------|
| Range of articles | GMKDSN 1,5 |
| Insulating material group | I |
| Rated surge voltage (III/3) | 6 kV |
| Rated surge voltage (III/2) | 6 kV |
| Rated surge voltage (II/2) | 6 kV |
| Rated voltage (III/3) | 400 V |
| Rated voltage (III/2) | 630 V |
| Rated voltage (II/2) | 1000 V |
| Connection in acc. with standard | EN-VDE |
| Nominal current I_N | 16 A |
| Nominal cross section | 1.5 mm ² |
| Maximum load current | 16 A |
| Insulating material | PA |
| Inflammability class acc. to UL 94 | V0 |
| Internal cylindrical gage | A1 |
| Stripping length | 6 mm |
| Nominal voltage, UL/CUL Use Group B | 300 V |
| Nominal current, UL/CUL Use Group B | 10 A |
| Nominal voltage, UL/CUL Use Group D | 300 V |
| Nominal current, UL/CUL Use Group D | 10 A |

Connection data

| | |
|--|----------------------|
| Conductor cross section solid min. | 0.14 mm ² |
| Conductor cross section solid max. | 1.5 mm ² |
| Conductor cross section stranded min. | 0.14 mm ² |
| Conductor cross section stranded max. | 1.5 mm ² |
| Conductor cross section stranded, with ferrule without plastic sleeve min. | 0.25 mm ² |

GMKDSN 1,5/ 5-7,62 Order No.: 1707056

<http://eshop.phoenixcontact.de/phoenix/treeViewClick.do?UID=1707056>

| | |
|---|----------------------|
| Conductor cross section stranded, with ferrule without plastic sleeve max. | 1.5 mm ² |
| Conductor cross section stranded, with ferrule with plastic sleeve min. | 0.25 mm ² |
| Conductor cross section stranded, with ferrule with plastic sleeve max. | 1.5 mm ² |
| Conductor cross section AWG/kcmil min. | 26 |
| Conductor cross section AWG/kcmil max | 16 |
| 2 conductors with same cross section, solid min. | 0.14 mm ² |
| 2 conductors with same cross section, solid max. | 0.75 mm ² |
| 2 conductors with same cross section, stranded min. | 0.14 mm ² |
| 2 conductors with same cross section, stranded max. | 0.75 mm ² |
| 2 conductors with same cross section, stranded, ferrules without plastic sleeve, min. | 0.25 mm ² |
| 2 conductors with same cross section, stranded, ferrules without plastic sleeve, max. | 0.5 mm ² |
| 2 conductors with same cross section, stranded, TWIN ferrules with plastic sleeve, min. | 0.5 mm ² |
| 2 conductors with same cross section, stranded, TWIN ferrules with plastic sleeve, max. | 1 mm ² |
| Minimum AWG according to UL/CUL | 30 |
| Maximum AWG according to UL/CUL | 14 |

Certificates / Approvals



Certification

CB, CCA, CSA, CUL, GOST, SEV, UL

Accessories

| Item | Designation | Description |
|---------|------------------------|--|
| 0804552 | SK 7,62/5:FORTL.ZAHLEN | Marker card, printed horizontally, self-adhesive, 10-section marker strip, 10 identical decades marked 1-10, 11-20 etc. up to 91-100, sufficient for 100 terminal blocks |

GMKDSN 1,5/ 5-7,62 Order No.: 1707056

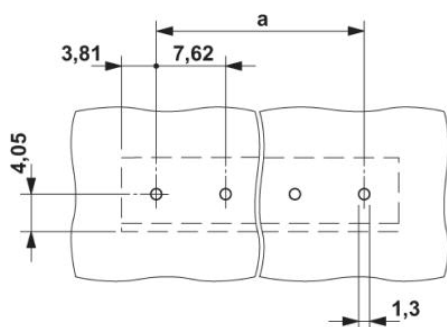
<http://eshop.phoenixcontact.de/phoenix/treeViewClick.do?UID=1707056>

Tools

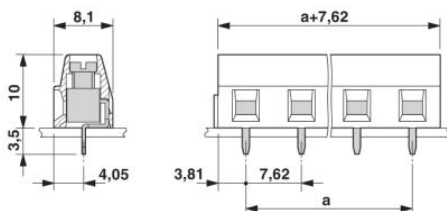
| | | |
|---------|-----------------|---|
| 1205037 | SZS 0,4X2,5 VDE | Screwdriver, bladed, VDE insulated, size: 0.4 x 2.5 x 80 mm, 2-component grip, with non-slip grip |
|---------|-----------------|---|

Diagrams/Drawings

Drilling plan/solder pad geometry



Dimensioned drawing



GMKDSN 1,5/ 5-7,62 Order No.: 1707056

<http://eshop.phoenixcontact.de/phoenix/treeViewClick.do?UID=1707056>

Address

PHOENIX CONTACT Inc., USA
586 Fulling Mill Road
Middletown, PA 17057, USA
Phone (800) 888-7388
Fax (717) 944-1625
<http://www.phoenixcon.com>



© 2010 Phoenix Contact
Technical modifications reserved;