

## Excellent Integrated System Limited

Stocking Distributor

Click to view price, real time Inventory, Delivery & Lifecycle Information:

[Phoenix Contact](#)  
[1771668](#)

For any questions, you can email us directly:

[sales@integrated-circuit.com](mailto:sales@integrated-circuit.com)



Extract from the online catalog


## HC-B 16-SFQD-67/M1PG21

Order No.: 1771668



<http://eshop.phoenixcontact.de/phoenix/treeViewClick.do?UID=1771668>

Box mounting base, for double locking latch, height 67 mm, with screw connection, 1x Pg21

Commercial data	
GTIN (EAN)	 4 017918 036386
sales group	D002
Pack	10 pcs.
Customs tariff	85389099
Catalog page information	Page 493 (PC-2009)

### Product notes

WEEE/RoHS-compliant since:  
03/01/2006



<http://www.download.phoenixcontact.com>  
Please note that the data given here has been taken from the online catalog. For comprehensive information and data, please refer to the user documentation. The General Terms and Conditions of Use apply to Internet downloads.

## Technical data

General data	
Note	For contact inserts HC-B16, BB32, D40, DD72, HS6, M, K
Design	B16
Height	67 mm
Width	57 mm
Length	117 mm

HC-B 16-SFQD-67/M1PG21 Order No.: 1771668

<http://eshop.phoenixcontact.de/phoenix/treeViewClick.do?UID=1771668>

Housing type	Box mounting base with cover
Locking type	For double locking latch
No. of cable exits	1
Cable exit	Conductor exit direction to the left (looking into the open protective cover)
Type of the screw connection	1x Pg21
Pg screw connection	With
Wrench size, union nut	28 mm
External cable diameter	10 mm ... 19 mm
Protective cover	Yes
Degree of protection	IP65 protection when the connector is inserted
Ambient temperature (operation)	-40 °C ... 125 °C
Housing material	Aluminum, die-cast
Housing surface material	Powder-coated, gray
Seal material	NBR
Cable gland material	Nickel-plated brass
Cable seal material	NBR
Material, protective cover	PA

### Certificates / Approvals

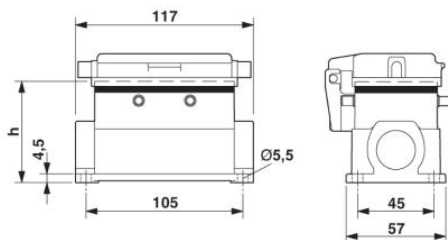


Certification

GOST

### Diagrams/Drawings

Dimensioned drawing



HC-B 16-SFQD-67/M1PG21 Order No.: 1771668

<http://eshop.phoenixcontact.de/phoenix/treeViewClick.do?UID=1771668>

---

**Address**

PHOENIX CONTACT Deutschland GmbH  
Flachsmarktstr. 8  
32825 Blomberg, Germany  
Phone +49 5235 3 12000  
Fax +49 5235 3 41200  
<http://www.phoenixcontact.de>



© 2010 Phoenix Contact  
Technical modifications reserved;