

## Excellent Integrated System Limited

Stocking Distributor

Click to view price, real time Inventory, Delivery & Lifecycle Information:

[Phoenix Contact](#)  
[1687891](#)

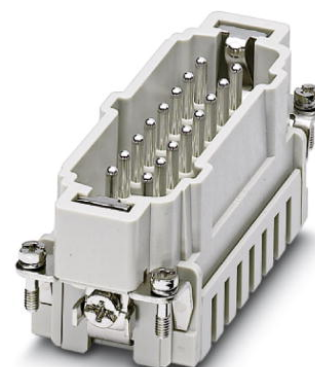
For any questions, you can email us directly:  
[sales@integrated-circuit.com](mailto:sales@integrated-circuit.com)



Extract from the online catalog


## HC-B 16-ESTZ

Order No.: 1687891



<http://eshop.phoenixcontact.de/phoenix/treeViewClick.do?UID=1687891>

HEAVYCON male housing for B16 housing, with 16 contacts, spring-cage connection

Commercial data	
GTIN (EAN)	 4 017918 849627
sales group	D000
Pack	1 pcs.
Customs tariff	85369010
Catalog page information	Page 433 (PC-2009)

### Product notes

WEEE/RoHS-compliant since:  
04/05/2006



<http://www.download.phoenixcontact.com>  
Please note that the data given here has been taken from the online catalog. For comprehensive information and data, please refer to the user documentation. The General Terms and Conditions of Use apply to Internet downloads.

## Technical data

General data	
Note	For housing HC-B16
Connection method	Spring-cage connection
Ambient temperature (operation)	-40 °C ... 125 °C (including heating up of contacts)
Pollution degree	3
Surge voltage category	III

HC-B 16-ESTZ Order No.: 1687891

<http://eshop.phoenixcontact.de/phoenix/treeViewClick.do?UID=1687891>

Number of positions	16
Insertion/withdrawal cycles	≥ 500
Design	B16
Conductor cross-section	0.14 mm <sup>2</sup> ... 2.5 mm <sup>2</sup>
Connection cross-section AWG	26 ... 14
Stripping length of the individual wire	8 mm +-1 mm
Connection	For housings of type B16/B32. Connectors may only be actuated when there is no load/voltage.

**Material data**

Inflammability class acc. to UL 94	V0
Contact material	Copper alloy
Contact surface material	Ag
Contact carrier material	PC

**Electrical characteristics**

Rated voltage (III/3)	500 V
Rated surge voltage	6 kV
Rated current	16 A

**Certificates / Approvals**



Certification

CUL, GOST, UL

**Accessories**

Item	Designation	Description
<b>General</b>		
1644326	HC-B-3PE	PE multiplier, for three PE connections, for HC-B (besides HC-B..E..ZZ) / HC-BB / HC-DD / HC-D40 / HC-D64 contact inserts
1604997	HC-B-PES	PE screw, for contact inserts HC-B / HC-BB / HC-DD / HC-D40 / HC-D64
1685327	HC-B-ZG	Strain relief clamps contact inserts of series: B-, BB-, D 40, D 64, DD and HV, straight cable exit

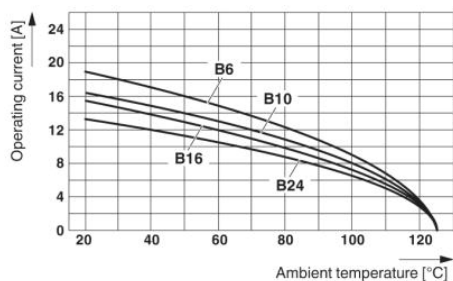
HC-B 16-ESTZ Order No.: 1687891

<http://eshop.phoenixcontact.de/phoenix/treeViewClick.do?UID=1687891>

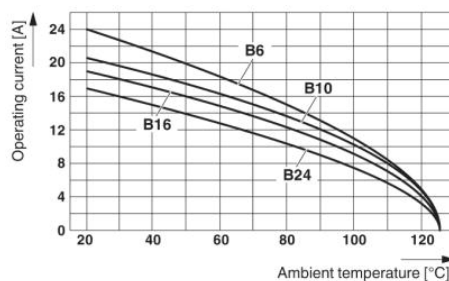
1685330	HC-B-ZS	Strain relief clamps contact inserts of series: B-, BB-, D 40, D 64, DD and HV, lateral cable exit
1772722	HC-CB	Coding pin, prevents mismatching of up to six plug connectors with an identical number of positions
1676860	HC-CBU	Keying socket for coding up to 16 plug connectors
1676857	HC-CST	Keying peg for coding up to 16 plug connectors

**Diagrams/Drawings**

Diagram



The illustration shows the derating diagram of various series B contact inserts (B6 to B24), conductor cross section 1.5 mm<sup>2</sup>

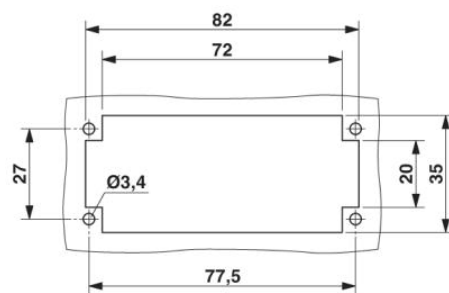


The illustration shows the derating diagram of various series B contact inserts (B6 to B24), conductor cross section 2.5 mm<sup>2</sup>

Dimensioned drawing



Male insert



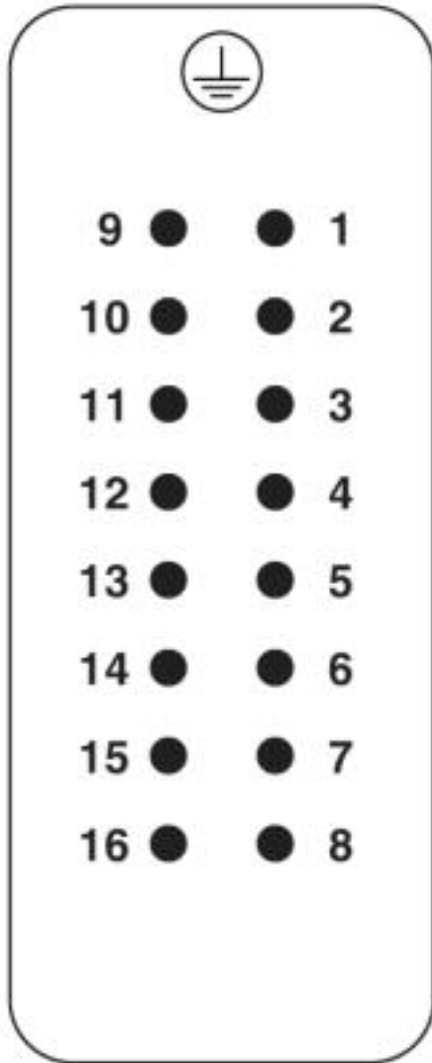
Panel cutout

HC-B 16-ESTZ Order No.: 1687891

<http://eshop.phoenixcontact.de/phoenix/treeViewClick.do?UID=1687891>

Schematic diagram

Connector pin assignment, connection side



HC-B 16-ESTZ Order No.: 1687891

<http://eshop.phoenixcontact.de/phoenix/treeViewClick.do?UID=1687891>

---

**Address**

PHOENIX CONTACT Inc., USA  
586 Fulling Mill Road  
Middletown, PA 17057, USA  
Phone (800) 888-7388  
Fax (717) 944-1625  
<http://www.phoenixcon.com>



© 2010 Phoenix Contact  
Technical modifications reserved;