

Excellent Integrated System Limited

Stocking Distributor

Click to view price, real time Inventory, Delivery & Lifecycle Information:

[Phoenix Contact](#)
[1678570](#)

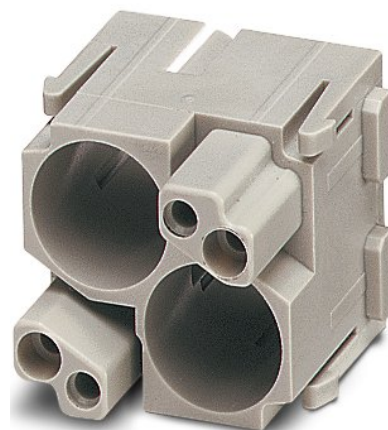
For any questions, you can email us directly:
sales@integrated-circuit.com



Extract from the online catalog


HC-M-EMV-MOD-BU

Order No.: 1678570



<http://eshop.phoenixcontact.de/phoenix/treeViewClick.do?UID=1678570>

HEAVYCON contact insert module, series M EMV (EMC), female, 2-pos., for HC-M-EMV male contacts

Commercial data	
GTIN (EAN)	 4 017918 167707
sales group	D042
Pack	2 pcs.
Customs tariff	85369010
Catalog page information	Page 460 (PC-2009)

Product notes

WEEE/RoHS-compliant since:
06/27/2006



<http://www.download.phoenixcontact.com>
 Please note that the data given here has been taken from the online catalog. For comprehensive information and data, please refer to the user documentation. The General Terms and Conditions of Use apply to Internet downloads.

Technical data

Electrical characteristics	
Note	For housing HC-B6 to B48, for housing HC-ADVANCE-B6 to B24, hinged retaining frame HC-M-MHR... necessary
Ambient temperature (operation)	-40 °C ... 125 °C

HC-M-EMV-MOD-BU Order No.: 1678570
<http://eshop.phoenixcontact.de/phoenix/treeViewClick.do?UID=1678570>

Mechanical characteristics

Insertion/withdrawal cycles	≥ 500
-----------------------------	-------

General characteristics

Number of module slots	2
Inflammability class acc. to UL 94	V0
Assembly instructions	Housing height ≥ 72 mm.Plug-in connections may only be operated only when there is no load/voltage.

Material data

Contact carrier material	PC
--------------------------	----

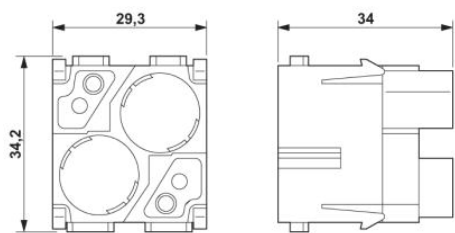
Certificates / Approvals



Certification CUL, GOST, UL

Diagrams/Drawings

Dimensioned drawing



Female insert

HC-M-EMV-MOD-BU Order No.: 1678570

<http://eshop.phoenixcontact.de/phoenix/treeViewClick.do?UID=1678570>

Address

PHOENIX CONTACT Deutschland GmbH
Flachsmarktstr. 8
32825 Blomberg, Germany
Phone +49 5235 3 12000
Fax +49 5235 3 41200
<http://www.phoenixcontact.de>



© 2010 Phoenix Contact
Technical modifications reserved;