

Excellent Integrated System Limited

Stocking Distributor

Click to view price, real time Inventory, Delivery & Lifecycle Information:

[Littelfuse](#)
[276.5105.5162](#)

For any questions, you can email us directly:
sales@integrated-circuit.com

ATS In-line Fuse Holder for Torpedo Style Fuse Rated 36V

RoHS



Specifications

Housing: Out of thermoplastic (UL 94-V0, heat-resistant)
Connections: Squeeze and screw connections for 2.5mm² cable
Metal parts: Copper alloy
Color: Black
Packaging:

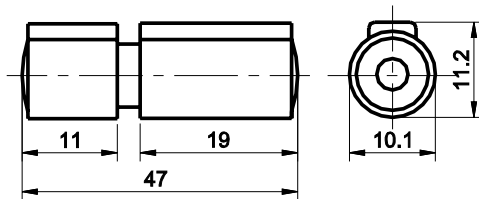
Series Serien	Pack Size
276.5105.xxx2	100

ATS Inline holder for Torpedo-style fuse links up to 36V.

In-Line-Sicherungshalter für Torpedo-Sicherungen bis 36V.

Fuse Holders
 Inline

Dimensions in mm / Maße in mm



Part Number Artikel-Nr.	Description Beschreibung	Contact Temperature Kontakttemperatur
276.5105.0002	Without fuse link	–
276.5105.4802	With fuse link 8A	–
276.5105.5162	With fuse link 16A	–

Corresponding fuse links see Section "Torpedo Type Fuses."