

Excellent Integrated System Limited

Stocking Distributor

Click to view price, real time Inventory, Delivery & Lifecycle Information:

[Littelfuse](#)
[02CO060.Z](#)

For any questions, you can email us directly:

sales@integrated-circuit.com

British Dimension HRCII-C Fuses

600 Volts AC • 2– 600 Amperes



Specifications

Voltage Rating:	600 Volts AC, 250 Volts DC
Interrupting Rating:	200,000 amperes rms symmetrical AC 80,000 amperes rms symmetrical DC
Ampere Range:	2 – 600 amperes
Approvals:	CSA Certified to Standard C22.2 No. 106-M90 (File No. LR90341)

Ampere ratings

2CO	2	10	25	50	80
	4	15	30	60	100
	6	20	40		
2CC	125	200	300	400	500
	150	250	350	450	600
2CM	80	125	200	300	400
	100	150	250	350	

HRCII-C fuses are stud-mounted fuses designed to British standard dimensions. They are generally used for motor short-circuit protection in dead-front holders, and are normally required to be used in conjunction with a motor running overload device.

Example part number (series & amperage): 2CM 150

Recommended Fuse Blocks

- DF30 (F, B, FB) — Fits 2 – 30 amps
- DF60 (F, B, FB) — Fits 40 – 60 amps
- DF100 (F, B, FB) — Fits 80 – 100 amps

For additional information on HRCII-C fuse holders, contact factory.

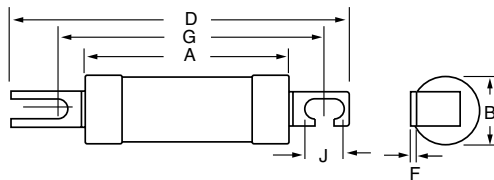


FIG. 1

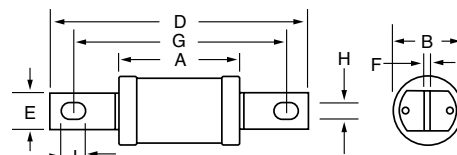


FIG. 2

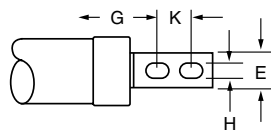


FIG. 3

Cat. No.	Old LF Part No.	Refer To Fig. No.	Dimensions in mm (inches in parentheses)									
			A	B	C	D	E	F	G	H	J	K
2CO 2-30	FI1	1	56 (2.2)	21 (0.83)	—	85 (3.3)	9 (0.35)	1 (0.04)	73 (2.87)	5.5 (0.21)	7.5 (0.29)	—
2CO 40-60	FI1	1	57 (2.24)	26 (1.02)	—	88 (3.45)	13 (0.51)	1.6 (0.06)	73 (2.87)	5.5 (0.21)	7.5 (0.29)	—
2CO 80-100	FI1	1	68 (2.88)	36 (1.42)	—	110 (4.33)	19 (0.75)	2.4 (0.09)	94 (3.7)	8.7 (0.34)	—	—
2CC 125-200	FIIC	2	76 (3)	41 (1.61)	—	137 (5.39)	19 (0.75)	3.6 (0.14)	111 (4.37)	8.7 (0.34)	16 (0.63)	—
2CC 250-400	FIIC	3	81 (3.19)	58 (2.28)	—	210 (8.27)	26 (1.02)	6.5 (0.26)	133 (5.24)	10.3 (0.4)	16 (0.63)	25.4 (1)
2CC 450-600	FIIC	3	83 (3.27)	74 (2.91)	—	210 (8.27)	26 (1.02)	6.5 (0.25)	133 (5.24)	10.3 (0.4)	16 (0.63)	25.4 (1)
2CM 80-100	FIIM	2	66 (2.6)	31 (1.22)	—	135 (5.31)	19 (0.75)	3.6 (0.14)	111 (4.37)	8.7 (0.34)	16 (0.63)	—
2CM 125-200	FIIM	1	77 (3.03)	41 (1.81)	—	110 (4.33)	19 (0.75)	2.4 (0.09)	94 (3.7)	8.7 (0.34)	10.3 (0.4)	—
2CM 250-400	FIIM	2	81 (3.19)	58 (2.25)	—	136 (5.35)	26 (1.02)	5.2 (0.2)	111 (4.37)	8.7 (0.34)	16 (0.63)	—

*Hole diameter to accept insulated stud (types C and D) mm min