

Excellent Integrated System Limited

Stocking Distributor

Click to view price, real time Inventory, Delivery & Lifecycle Information:

[Phoenix Contact](#)
[2782313](#)

For any questions, you can email us directly:

sales@integrated-circuit.com



Extract from the online catalog

C-UFB-24DC/E

Order No.: 2782313


The illustration shows version C-UFB- 5DC/E



<http://eshop.phoenixcontact.de/phoenix/treeViewClick.do?UID=2782313>

Attachment plug with surge voltage coarse and fine protection, for coaxial signal interfaces with floating shield, signal voltage 24 V.
Connection: BNC female/male connector

Commercial data

GTIN (EAN)	 4 017918 069452
Note	Made-to-order
sales group	J401
Pack	10 pcs.
Customs tariff	85363010
Catalog page information	Page 174 (TT-2009)

Product notes

WEEE/RoHS-compliant since:
08/01/2006



<http://www.download.phoenixcontact.com>
Please note that the data given here has been taken from the online catalog. For comprehensive information and data, please refer to the user documentation. The General Terms and Conditions of Use apply to Internet downloads.

Technical data

General

Housing material	Aluminum
Color	black

C-UFB-24DC/E Order No.: 2782313

<http://eshop.phoenixcontact.de/phoenix/treeViewClick.do?UID=2782313>

Standards for air and creepage distances	VDE 0110-1
	IEC 60664-1: 1992-10
Total surge current (8/20) μ s	20 kA
Ambient temperature (operation)	-40 °C ... 80 °C
Mounting type	Connection-specific intermediate plugging
Design	Attachment plug
Degree of protection	IP20
Direction of action	Line-Shield/Earth Ground
Width	25.40 mm
Height	93.00 mm
Length	25.40 mm

Protective circuit

IEC category	C2
	C3
	D1
Maximum continuous operating voltage U_c	30 V DC
Maximum continuous voltage U_c (wire-shield)	30 V DC
Nominal current I_n	185 mA (25°C)
Operating effective current I_c at U_c	$\leq 10 \mu$ A
Ground conductor current I_{PE}	$\leq 2 \mu$ A
Nominal discharge surge current I_n (8/20) μ s (Core-Earth)	10 kA
Nominal discharge surge current I_n (8/20) μ s (Core-Shield)	10 kA
Total surge current (8/20) μ s	20 kA
Output voltage limitation at 1 kV/ μ s (Core-Earth) spike	≤ 500 V
Output voltage limitation at 1 kV/ μ s (Core-Shield) spike	≤ 160 V
Output voltage limitation at 1 kV/ μ s (Core-Earth) static	≤ 500 V
Output voltage limitation at 1 kV/ μ s (Core-Shield) static	≤ 42 V
Residual voltage at I_n , (conductor-ground)	≤ 50 V (10 cm cable)
Residual voltage at I_n , (conductor-shield)	≤ 43 V
Protection level U_p (Core-Earth)	≤ 450 V
Protection level U_p (Core-Shield)	≤ 35 V

C-UFB-24DC/E Order No.: 2782313

<http://eshop.phoenixcontact.de/phoenix/treeViewClick.do?UID=2782313>

Response time t _A (Core-Earth)	≤ 100 ns
Response time t _A (Core-GND)	≤ 500 ns
Input attenuation a _E , asym.	1.7 dB (≤ 20 MHz)
Cut-off frequency f _g (3 dB), asym. (shield) in 50 Ohm system	Typ. 170 MHz
Surge carrying capacity in acc. with IEC 61643-21 (Core-Earth)	C2 (10 kV/5 kA)
	D1 (2.5 kA)

Connection data

Type of connection	BNC 50 Ω
Connection type IN	BNC socket
Connection type OUT	BNC plug

Connection, equipotential bonding

Type of connection	PVC litz wire
--------------------	---------------

Connection, protective circuit

Standards/regulations	IEC 61643-21
-----------------------	--------------

Certificates / Approvals

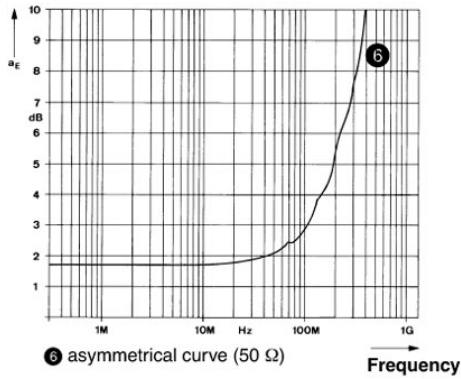
 Certification GOST
Accessories

Item	Designation	Description
Plug/Adapter		
2805038	BNC-DV 50	BNC connector, double-level, for mounting on NS 32 or NS 35/7.5, wave impedance: 50 Ohm
2805041	BNC-V 50	BNC connector, single-level, for mounting on NS 32 or NS 35/7.5, wave impedance: 50 Ohm

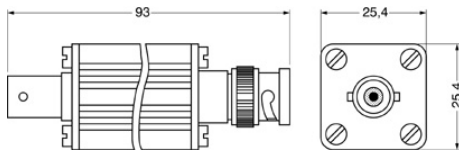
C-UFB-24DC/E Order No.: 2782313
<http://eshop.phoenixcontact.de/phoenix/treeViewClick.do?UID=2782313>

Diagrams/Drawings

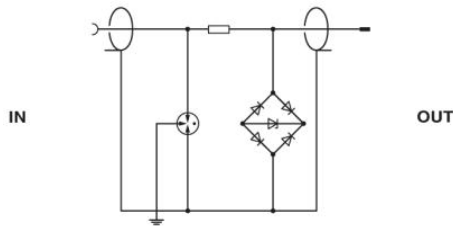
Diagram



Dimensioned drawing



Circuit diagram



C-UFB-24DC/E Order No.: 2782313

<http://eshop.phoenixcontact.de/phoenix/treeViewClick.do?UID=2782313>

Address

PHOENIX CONTACT Deutschland GmbH
Flachsmarktstr. 8
32825 Blomberg, Germany
Phone +49 5235 3 12000
Fax +49 5235 3 41200
<http://www.phoenixcontact.de>



© 2010 Phoenix Contact
Technical modifications reserved;