

## Excellent Integrated System Limited

Stocking Distributor

Click to view price, real time Inventory, Delivery & Lifecycle Information:

[Phoenix Contact](#)  
[3035331](#)

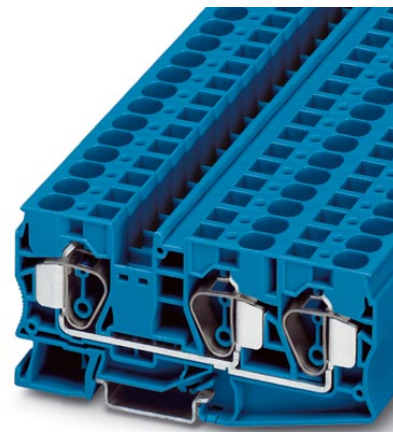
For any questions, you can email us directly:  
[sales@integrated-circuit.com](mailto:sales@integrated-circuit.com)



Extract from the online catalog

## ST 16-TWIN BU


Order No.: 3035331



<http://eshop.phoenixcontact.de/phoenix/treeViewClick.do?UID=3035331>

Feed-through modular terminal block, Type of connection: Spring-cage connection, Spring-cage connection, Cross section: 0.2 mm<sup>2</sup> - 25 mm<sup>2</sup>, AWG 24 - 4, Width: 12.2 mm, Color: blue, Mounting type: NS 35/15, NS 35/7.5

### Commercial data

GTIN (EAN)	 4 046356 100915
sales group	A630
Pack	25 pcs.
Customs tariff	85369010
Catalog page information	Page 85 (CL-2009)

### Product notes

WEEE/RoHS-compliant since:  
07/03/2006



<http://www.download.phoenixcontact.com>  
Please note that the data given here has been taken from the online catalog. For comprehensive information and data, please refer to the user documentation. The General Terms and Conditions of Use apply to Internet downloads.

### Technical data

#### General

Number of levels	1
Number of connections	3
Color	blue

ST 16-TWIN BU Order No.: 3035331

<http://eshop.phoenixcontact.de/phoenix/treeViewClick.do?UID=3035331>

Insulating material	PA
Inflammability class acc. to UL 94	V0

**Dimensions**

Width	12.2 mm
Length	107.8 mm
Height NS 35/7.5	51.5 mm
Height NS 35/15	59 mm

**Technical data**

Maximum load current	90 A (with 25 mm <sup>2</sup> conductor cross section)
Rated surge voltage	8 kV
Pollution degree	3
Surge voltage category	III
Insulating material group	I
Connection in acc. with standard	IEC 60947-7-1
Nominal current I <sub>N</sub>	76 A
Nominal voltage U <sub>N</sub>	800 V
Open side panel	ja

**Connection data**

Conductor cross section solid min.	0.2 mm <sup>2</sup>
Conductor cross section solid max.	25 mm <sup>2</sup>
Conductor cross section stranded min.	0.2 mm <sup>2</sup>
Conductor cross section stranded max.	16 mm <sup>2</sup>
Conductor cross section AWG/kcmil min.	24
Conductor cross section AWG/kcmil max	4
Conductor cross section stranded, with ferrule without plastic sleeve min.	0.25 mm <sup>2</sup>
Conductor cross section stranded, with ferrule without plastic sleeve max.	16 mm <sup>2</sup>
Conductor cross section stranded, with ferrule with plastic sleeve min.	0.25 mm <sup>2</sup>
Conductor cross section stranded, with ferrule with plastic sleeve max.	16 mm <sup>2</sup>
2 conductors with same cross section, stranded, TWIN ferrules with plastic sleeve, min.	1.5 mm <sup>2</sup>
2 conductors with same cross section, stranded, TWIN ferrules with plastic sleeve, max.	4 mm <sup>2</sup>

ST 16-TWIN BU Order No.: 3035331

<http://eshop.phoenixcontact.de/phoenix/treeViewClick.do?UID=3035331>

Type of connection	Spring-cage connection
Stripping length	16 mm
Internal cylindrical gage	A7

### Certificates / Approvals



Certification

UL, VDE-PZI

### Accessories

Item	Designation	Description
<b>Assembly</b>		
3035357	D-ST 16-TWIN	End cover, Length: 107.8 mm, Width: 2.2 mm, Color: gray

### Bridges

3005950	FBS 2-12	Plug-in bridge, Number of positions: 2, Color: red
3030886	RB ST 16-(2,5/4)	Reducing bridge, Number of positions: 2, Color: red

### General

0812146	ZB 12,LGS:L1-N,PE	Zack marker strip, printed horizontally: 5-section, L1, L2, L3, N, PE, color: White
---------	-------------------	---

### Marking

0812133	ZB 12:SO/CMS	Zack marker strip, 5-section, divisible, special printing, marking according to customer requirements
0812120	ZB 12:UNPRINTED	Zack marker strip without color print: 5-section, for individual labeling with B-STIFT, ZB-T or CMS system, sufficient for labeling 50 terminal blocks per pack
0809735	ZBF 12:UNBEDRUCKT	Zack strip, flat, unprinted, 5-section, divisible, for labeling by the customer

### Plug/Adapter

0201731	MPS-IH BK	Insulating sleeve, Color: black
0201689	MPS-IH BU	Insulating sleeve, Color: blue
0201702	MPS-IH GN	Insulating sleeve, Color: green
0201728	MPS-IH GY	Insulating sleeve, Color: gray

ST 16-TWIN BU Order No.: 3035331

<http://eshop.phoenixcontact.de/phoenix/treeViewClick.do?UID=3035331>

0201676	MPS-IH RD	Insulating sleeve, Color: red
0201715	MPS-IH VT	Insulating sleeve, Color: violet
0201663	MPS-IH WH	Insulating sleeve, Color: white
0201692	MPS-IH YE	Insulating sleeve, Color: yellow
0201744	MPS-MT	Test plugs

**Tools**

1206612	SZF 3-1,0X5,5	Actuation tool, for ST terminal blocks, also suitable for use as a bladed screwdriver, size: 1.0 x 5.5 x 150 mm, 2-component grip, with non-slip grip
---------	---------------	---

**Diagrams/Drawings**

Circuit diagram



ST 16-TWIN BU Order No.: 3035331

<http://eshop.phoenixcontact.de/phoenix/treeViewClick.do?UID=3035331>

---

#### Address

PHOENIX CONTACT Deutschland GmbH  
Flachsmarktstr. 8  
32825 Blomberg, Germany  
Phone +49 5235 3 12000  
Fax +49 5235 3 41200  
<http://www.phoenixcontact.de>



© 2011 Phoenix Contact  
Technical modifications reserved;