

## Excellent Integrated System Limited

Stocking Distributor

Click to view price, real time Inventory, Delivery & Lifecycle Information:

[Phoenix Contact](#)  
[3036479](#)

For any questions, you can email us directly:

[sales@integrated-circuit.com](mailto:sales@integrated-circuit.com)

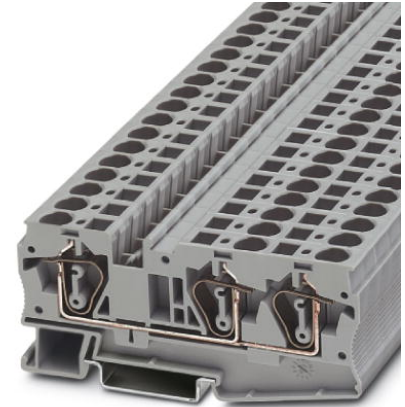


Extract from the online catalog

## ST 6-TWIN BU

Order No.: 3036479


The illustration shows version ST 6-TWIN in gray



<http://eshop.phoenixcontact.de/phoenix/treeViewClick.do?UID=3036479>

Feed-through modular terminal block, Type of connection: Spring-cage connection, Cross section: 0.2 mm<sup>2</sup> - 10 mm<sup>2</sup>, AWG 24 - 8, Width: 8.2 mm, Color: blue, Mounting type: NS 35/7.5, NS 35/15

### Commercial data

GTIN (EAN)	 4 017918 886820
sales group	A630
Pack	50 pcs.
Customs tariff	85369010
Catalog page information	Page 83 (CL-2009)

### Product notes

WEEE/RoHS-compliant since:  
01/01/2003



<http://www.download.phoenixcontact.com>  
Please note that the data given here has been taken from the online catalog. For comprehensive information and data, please refer to the user documentation. The General Terms and Conditions of Use apply to Internet downloads.

### Technical data

#### General

Number of levels	1
Number of connections	3
Color	blue
Insulating material	PA

**ST 6-TWIN BU** Order No.: 3036479

<http://eshop.phoenixcontact.de/phoenix/treeViewClick.do?UID=3036479>

Inflammability class acc. to UL 94	V0
------------------------------------	----

**Dimensions**

Width	8.2 mm
Length	90.5 mm
Height NS 35/7.5	43.5 mm
Height NS 35/15	51 mm

**Technical data**

Maximum load current	52 A (with 10 mm <sup>2</sup> conductor cross section)
Rated surge voltage	8 kV
Pollution degree	3
Surge voltage category	III
Insulating material group	I
Connection in acc. with standard	IEC 60947-7-1
Nominal current I <sub>N</sub>	41 A (the maximum load current must not be exceeded by the total current of all connected conductors)
Nominal voltage U <sub>N</sub>	1000 V
Open side panel	ja

**Connection data**

Conductor cross section solid min.	0.2 mm <sup>2</sup>
Conductor cross section solid max.	10 mm <sup>2</sup>
Conductor cross section stranded min.	0.2 mm <sup>2</sup>
Conductor cross section stranded max.	6 mm <sup>2</sup>
Conductor cross section AWG/kcmil min.	24
Conductor cross section AWG/kcmil max	8
Conductor cross section stranded, with ferrule without plastic sleeve min.	0.25 mm <sup>2</sup>
Conductor cross section stranded, with ferrule without plastic sleeve max.	6 mm <sup>2</sup>
Conductor cross section stranded, with ferrule with plastic sleeve min.	0.25 mm <sup>2</sup>
Conductor cross section stranded, with ferrule with plastic sleeve max.	6 mm <sup>2</sup>
2 conductors with same cross section, stranded, TWIN ferrules with plastic sleeve, min.	0.5 mm <sup>2</sup>
2 conductors with same cross section, stranded, TWIN ferrules with plastic sleeve, max.	1.5 mm <sup>2</sup>

ST 6-TWIN BU Order No.: 3036479  
<http://eshop.phoenixcontact.de/phoenix/treeViewClick.do?UID=3036479>

Type of connection	Spring-cage connection
Stripping length	12 mm
Internal cylindrical gage	A5

### Certificates / Approvals



Certification CB, CSA, CUL, GL, GOST, UL, VDE-PZI

Certification Ex: IECEX, KEMA-EX

### Accessories

Item	Designation	Description
<b>Assembly</b>		
3036767	D-ST 6-TWIN	End cover, Length: 90.5 mm, Width: 2.2 mm, Height: 43.5 mm, Color: gray

### Bridges

3030284	FBS 2-8	Plug-in bridge, Number of positions: 2, Color: red
3030297	FBS 3-8	Plug-in bridge, Number of positions: 3, Color: red
3030307	FBS 4-8	Plug-in bridge, Number of positions: 4, Color: red
3030310	FBS 5-8	Plug-in bridge, Number of positions: 5, Color: red
3032470	FBS 6-8	Plug-in bridge, Number of positions: 6, Color: red
3030323	FBS 10-8	Plug-in bridge, Number of positions: 10, Color: red

### Marking

1052125	ZB 8,LGS:1-9	Zack marker strip, printed horizontally: 9-section, with consecutive numbers 1 -9
1052015	ZB 8,LGS:FORTL.ZAHLEN	Zack marker strip, 10-section, printed horizontally: with the numbers 1 - 10, 11 - 20 and so on up to 491 - 500, color: white
1052413	ZB 8,LGS:L1-N,PE	Zack strip, printed horizontally, strips with 10 labels, L1, L2, L3, N, PE, L1, L2, L3, N, PE, color: white
1052028	ZB 8,QR:FORTL.ZAHLEN	Zack marker strip, 10-section, printed vertically: with consecutive numbers 1 - 10, 11 - 20, and so on up to 91 - 100, color: white
1052044	ZB 8,QR:GLEICHE ZAHLEN	Zack strip, 10-section, printed vertically: with identical numbers, 1/1/1, 2/2/2 etc. up to 100/100/100, color: white

ST 6-TWIN BU Order No.: 3036479

<http://eshop.phoenixcontact.de/phoenix/treeViewClick.do?UID=3036479>

5062483	ZB 8/BU-100:UNBEDRUCKT	Zack strip, unprinted: 10-section, for individual labeling with M-PEN, ZB-T or CMS system, large batch, sufficient for labeling 1000 terminal blocks, color: blue
5062496	ZB 8/GN-100:UNBEDRUCKT	Zack strip, unprinted: 10-section, for individual labeling with M-PEN, ZB-T or CMS system, large batch, sufficient for labeling 1000 terminal blocks, color: green
5062506	ZB 8/RD-100:UNBEDRUCKT	Zack strip, unprinted: 10-section, for individual labeling with M-PEN, ZB-T or CMS system, large batch, sufficient for labeling 1000 terminal blocks, color: red
5060896	ZB 8/WH-100:UNBEDRUCKT	Zack strip, unprinted: 10-section, for individual labeling with M-PEN, ZB-T or CMS system, large batch, sufficient for labeling 1000 terminal blocks, terminal width: 8.2 mm, color: White
5062519	ZB 8/YE-100:UNBEDRUCKT	Zack strip, unprinted: 10-section, for individual labeling with M-PEN, ZB-T or CMS system, large batch, sufficient for labeling 1000 terminal blocks, color: yellow
1050512	ZB 8:SO/CMS	Zack strip, 10-section, divisible, special printing, marking according to customer requirements
1052002	ZB 8:UNBEDRUCKT	Zack strip, 10-section, unprinted, for individual labeling with M-PEN, ZB-T or CMS system, sufficient for 100 terminal blocks, for a terminal width of 8.2 mm, color: white
0800734	ZBFM 8/WH:UNBEDRUCKT	Zack marker sheet, flat, unprinted: 50-section, 10 strips à 5 markers, sufficient for 50 terminal blocks, for all terminal blocks, pitch 8.2 mm, labeling with M-PEN or CMS system, color: white
0804934	ZBFM 8:SO/CMS	Special printing, Zack marker sheet, flat, 50-section, divisible, marking according to customer requirements

**Plug/Adapter**

0201731	MPS-IH BK	Insulating sleeve, Color: black
0201689	MPS-IH BU	Insulating sleeve, Color: blue
0201702	MPS-IH GN	Insulating sleeve, Color: green
0201728	MPS-IH GY	Insulating sleeve, Color: gray
0201676	MPS-IH RD	Insulating sleeve, Color: red
0201715	MPS-IH VT	Insulating sleeve, Color: violet
0201663	MPS-IH WH	Insulating sleeve, Color: white
0201692	MPS-IH YE	Insulating sleeve, Color: yellow
0201744	MPS-MT	Test plugs
3030925	PAI-4	Test adapter, Color: gray
3031005	PS-8	Test adapter, Color: red
3030860	RB ST 6-(2,5/4)	Reducing bridge, Number of positions: 2, Color: red

**Tools**

1204520	SZF 2-0,8X4,0	Actuation tool, for ST terminal blocks, also suitable for use as a bladed screwdriver, size: 0.8 x 4.0 x 100 mm, 2-component grip, with non-slip grip
---------	---------------	---

ST 6-TWIN BU Order No.: 3036479

<http://eshop.phoenixcontact.de/phoenix/treeViewClick.do?UID=3036479>

---

### Diagrams/Drawings

Circuit diagram

---



ST 6-TWIN BU Order No.: 3036479

<http://eshop.phoenixcontact.de/phoenix/treeViewClick.do?UID=3036479>

---

#### Address

PHOENIX CONTACT Deutschland GmbH  
Flachsmarktstr. 8  
32825 Blomberg, Germany  
Phone +49 5235 3 12000  
Fax +49 5235 3 41200  
<http://www.phoenixcontact.de>



© 2011 Phoenix Contact  
Technical modifications reserved;