

Excellent Integrated System Limited

Stocking Distributor

Click to view price, real time Inventory, Delivery & Lifecycle Information:

[Phoenix Contact](#)
[2905051](#)

For any questions, you can email us directly:
sales@integrated-circuit.com



Extract from the online catalog

ST-OV2-110DC/ 60DC/1

Order No.: 2905051


The illustration shows version ST-OV 2- 5 DC/ 60 DC/1



<http://eshop.phoenixcontact.de/phoenix/treeViewClick.do?UID=2905051>

Pluggable power optocoupler, with light indicator and protection circuits in the input and output circuits, input: 110 V DC, output: 12-60 V DC/max. 1 A, can be plugged on basic termination blocks

Commercial data

GTIN (EAN)	 4 017918 079192
sales group	G101
Pack	10 pcs.
Customs tariff	85364900
Catalog page information	Page 90 (IF-2005)

Product notes

WEEE/RoHS-compliant since:
06/07/2007



<http://www.download.phoenixcontact.com>
Please note that the data given here has been taken from the online catalog. For comprehensive information and data, please refer to the user documentation. The General Terms and Conditions of Use apply to Internet downloads.

ST-OV2-110DC/ 60DC/1 Order No.: 2905051

<http://eshop.phoenixcontact.de/phoenix/treeViewClick.do?UID=2905051>
Technical data
Input data

Nominal input voltage U_N	110 V DC $\pm 20\%$
Switching threshold "0" signal in reference to U_N	≤ 0.4
Switching threshold "1" signal in reference to U_N	≥ 0.8
Typical input current at U_N	6 mA
Typical response time	20 μ s
Typical turn-off time	200 μ s
Status display	Yellow LED
Type of protection	Protection against polarity reversal Surge protection
Protective circuit/component	Polarity protection diode
Transmission frequency	500 Hz

Output data

Output nominal voltage range	12 V DC ... 60 V DC
Limiting continuous current	1 A (see derating curve)
Surge current	5 A (t = 1 s)
Peak offstate voltage	60 V DC (Collector-emitter reverse voltage)
Voltage drop at max. limiting continuous current	1.2 V
Output circuit	2-wire, floating
Type of protection	Protection against polarity reversal Surge protection
Protective circuit/component	Polarity protection diode

General data

Width	14.6 mm
Height	33 mm
Depth	66.5 mm
Test voltage input/output	2.5 kV AC
Ambient temperature (operation)	-20 °C ... 60 °C
Ambient temperature (storage/transport)	-20 °C ... 70 °C
Mounting position	Any
Standards/regulations	DIN VDE 0110b, Gr. C for 250 V DC DIN VDE 0160 (in relevant parts)

ST-OV2-110DC/ 60DC/1 Order No.: 2905051

<http://eshop.phoenixcontact.de/phoenix/treeViewClick.do?UID=2905051>

Certificates / Approvals

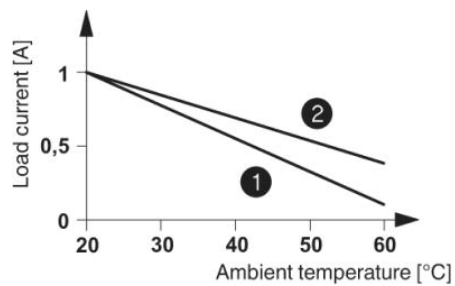


Certification

GOST

Diagrams/Drawings

Diagram

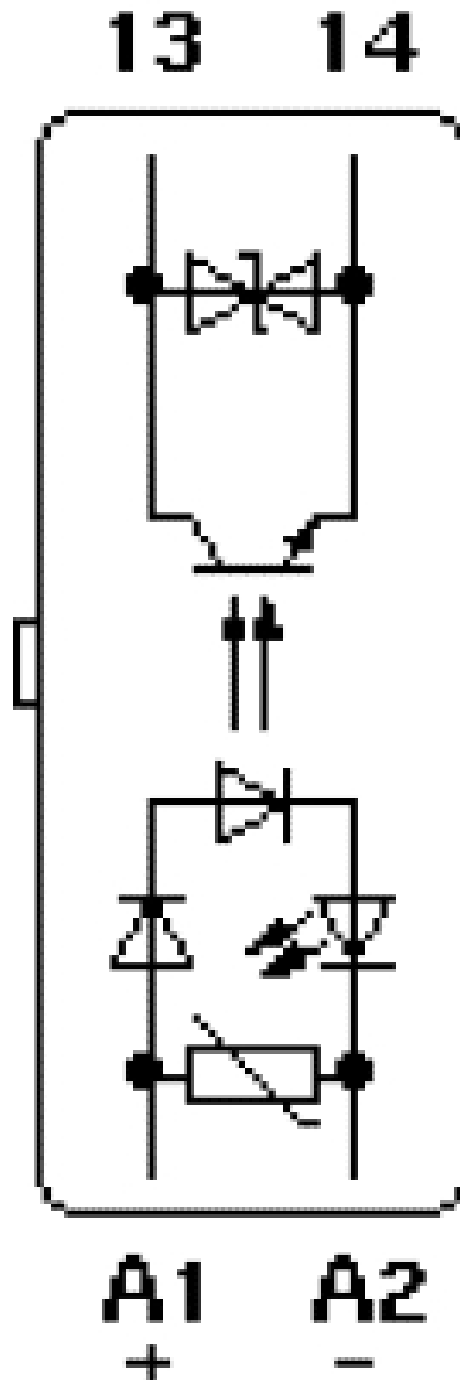
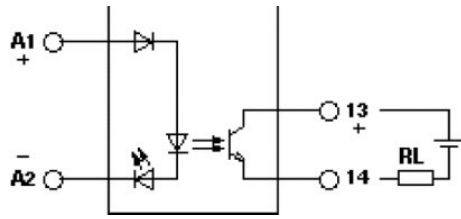


- ① In rows with zero spacing
- ② stand-alone device

ST-OV2-110DC/ 60DC/1 Order No.: 2905051

<http://eshop.phoenixcontact.de/phoenix/treeViewClick.do?UID=2905051>

Circuit diagram



ST-OV2-110DC/ 60DC/1 Order No.: 2905051

<http://eshop.phoenixcontact.de/phoenix/treeViewClick.do?UID=2905051>

Address

PHOENIX CONTACT Deutschland GmbH
Flachsmarktstr. 8
32825 Blomberg, Germany
Phone +49 5235 3 12000
Fax +49 5235 3 41200
<http://www.phoenixcontact.de>



© 2011 Phoenix Contact
Technical modifications reserved;