

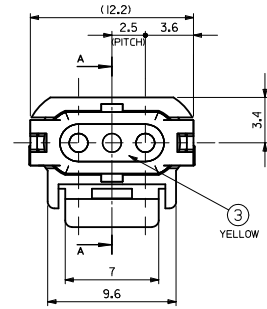
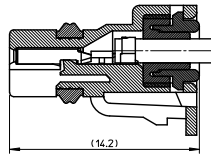
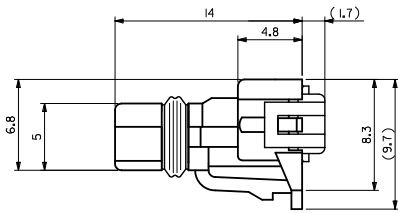
Excellent Integrated System Limited

Stocking Distributor

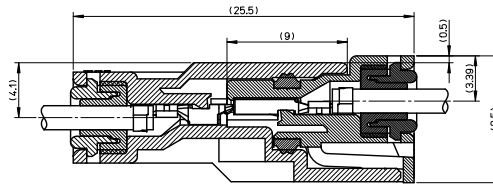
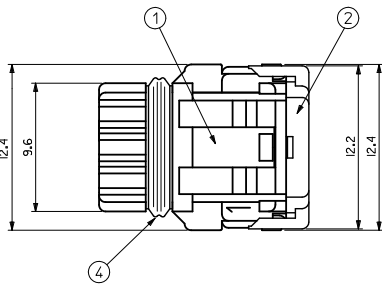
Click to view price, real time Inventory, Delivery & Lifecycle Information:

[Molex Connector Corporation](#)
[0521170340](#)

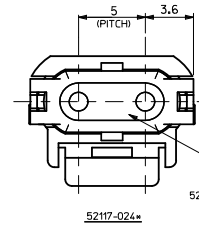
For any questions, you can email us directly:
sales@integrated-circuit.com



52117-034*



嵌合状態図
FULLY MATED CONDITION



52117-024*

52117-0240-0242 : RED
52117-0243 : BLACK

注 記
NOTE

- 適合端子: 50039-8*00
APPLICABLE TERMINAL: 50039-8*00
- 適合相手: 52116-0*4*
MATES WITH: 52116-0*4*
- 製品仕様書: PS-52117-007
PRODUCT SPECIFICATION: PS-52117-007
- 取扱説明書: AS-52117-001
APPLICATION SPECIFICATION: AS-52117-001
- ELV及RoHS適合品
ELV AND ROHS COMPLIANT

赤	RED	52117-0342	3
黒	BLACK	52117-0341	3
白	WHITE	52117-0340	3
白	WHITE	52117-0243	2
赤	RED	52117-0242	2
黒	BLACK	52117-0241	2
白	WHITE	52117-0240	2
色	COLOR	MATERIAL NO.	極数 CKT

シリコン系 SILICONE	黄 YELLOW	リングシール RING SEAL	④
シリコン系 SILICONE	黄 YELLOW	ワイヤエンドシール WIRE END SEAL	③
ポリエステル (15%G.F.) POLYESTER	白 WHITE	キャップ CAP	②
ポリエステル (15%G.F.) POLYESTER	白 WHITE	レセプタハウジング REC. HOUSING	①
材 料 MATERIAL	色 COLOR	名 称 TITLE	
構成部品 COMPONENTS			

REVISED & REDRAWN EC NO: ITR2012-0029 DRAWN: JINAKA 2011/11/18 CHKD: SANDO 2011/12/14 APPR: MAYAMOTO 2012/01/18	GENERAL TOLERANCES (UNLESS SPECIFIED)	DIMENSION STYLE MM ONLY	SCALE 5:1	DESIGN UNITS METRIC	THIRD ANGLE PROJECTION
	10 UNDER ± 0.2	DRAWN BY Y. ASHIZAWA	DATE 1988/7/8	TITLE 2.5 WATERPROOF CONN. REC. HSG ASSY W/POSITIVE LOCK	
	10 OVER 30 UNDER ± 0.25	CHECKED BY M. SAKANO	DATE 1988/7/8	MOLEX INCORPORATED	
	30 OVER ± 0.3	APPROVED BY MAYAMOTO	DATE 2012/01/18	DOCUMENT NO. SD-52117-001	
ANGULAR ± 3 °	MATERIAL NO.		SHEET NO. 1 OF 1		
DRAFT WHERE APPLICABLE MUST REMAIN WITHIN DIMENSIONS		SEE CHART THIS DRAWING CONTAINS INFORMATION THAT IS PROPRIETARY TO MOLEX INCORPORATED AND SHOULD NOT BE USED WITHOUT WRITTEN PERMISSION			