

Excellent Integrated System Limited

Stocking Distributor

Click to view price, real time Inventory, Delivery & Lifecycle Information:

[Phoenix Contact](#)
[2017224](#)

For any questions, you can email us directly:

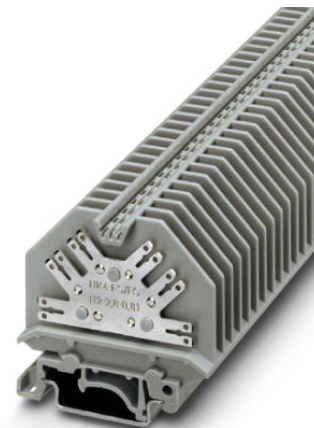
sales@integrated-circuit.com



Extract from the online catalog

UHK 4-FS/FS(12-2,8-0,8)


Order No.: 2017224



<http://eshop.phoenixcontact.de/phoenix/treeViewClick.do?UID=2017224>

Feed-through modular terminal block, Type of connection: Special and hybrid connection, Width: 6.2 mm, Color: gray, Mounting type: NS 35/7.5, NS 35/15, NS 32

Commercial data

GTIN (EAN)	 4 017918 052683
sales group	A001
Pack	50 pcs.
Customs tariff	85369010
Catalog page information	Page 405 (CL-2009)

Product notes

WEEE/RoHS-compliant since: 01/01/2003



<http://www.download.phoenixcontact.com>
 Please note that the data given here has been taken from the online catalog. For comprehensive information and data, please refer to the user documentation. The General Terms and Conditions of Use apply to Internet downloads.

Technical data

General

Number of levels	1
Number of connections	2
Color	gray

UHK 4-FS/FS(12-2,8-0,8) Order No.: 2017224

<http://eshop.phoenixcontact.de/phoenix/treeViewClick.do?UID=2017224>

Insulating material	PA
Inflammability class acc. to UL 94	V2

Dimensions

Width	6.2 mm
Length	54 mm
Height NS 35/7.5	51.5 mm
Height NS 35/15	59 mm
Height NS 32	56.5 mm

Technical data

Maximum load current	40 A (dependent on the slip-on connection sleeve)
Rated surge voltage	8 kV
Pollution degree	3
Surge voltage category	III
Insulating material group	I
Nominal current I_N	40 A (dependent on the slip-on connection sleeve)
Nominal voltage U_N	800 V (voltage data for slip-on connections in acc. with EN 61210 are also dependent on nominal size, material, insulation of the sleeve and conductor cross section.)
Open side panel	ja

Connection data

Type of connection	Special and hybrid connection
Slip-on connection	6.3/2.8 x 0.8 mm

Certificates / Approvals



Certification

BV, CSA, GOST, LR, PRS, UL

UHK 4-FS/FS(12-2,8-0,8) Order No.: 2017224

<http://eshop.phoenixcontact.de/phoenix/treeViewClick.do?UID=2017224>
Accessories

Item	Designation	Description
------	-------------	-------------

Assembly

3022218	CLIPFIX 35	Snap-on end bracket, for 35 mm NS 35/7.5 or NS 35/15 DIN rail, can be fitted with Zack strip ZB 8 and ZB 8/27, terminal strip marker KLM 2 and KLM, width: 9.5 mm, color: gray
2002022	D-HK 4	End cover, Length: 54 mm, Width: 2.3 mm, Color: gray
1922022	D-UVK 4	End cover, Width: 2.3 mm, Color: gray
1201442	E/UK	End clamp, for assembly on NS 32 or NS 35/7.5 DIN rail
1201028	NS 32 AL UNPERF 2000MM	G rail 32 mm (NS 32)
1201280	NS 32 CU/120QMM UNPERF 2000MM	G-profile DIN rail, deep-drawn, material: Copper, unperforated, height 15 mm, width 32 mm, length 2 m
1201358	NS 32 CU/35QMM UNPERF 2000MM	G-profile DIN rail, material: Copper, unperforated, height 15 mm, width 32 mm, length 2 m
1201002	NS 32 PERF 2000MM	G-profile DIN rail, material: Steel, perforated, height 15 mm, width 32 mm, length 2 m
1201015	NS 32 UNPERF 2000MM	G-profile DIN rail, material: Steel, unperforated, height 15 mm, width 32 mm, length 2 m
0801762	NS 35/ 7,5 CU UNPERF 2000MM	DIN rail, material: Copper, unperforated, height 7.5 mm, width 35 mm, length: 2 m
0801733	NS 35/ 7,5 PERF 2000MM	DIN rail, material: Steel, galvanized and passivated with a thick layer, perforated, height 7.5 mm, width 35 mm, length: 2 m
0801681	NS 35/ 7,5 UNPERF 2000MM	DIN rail, material: Steel, unperforated, height 7.5 mm, width 35 mm, length: 2 m
1201756	NS 35/15 AL UNPERF 2000MM	DIN rail, deep-drawn, high profile, unperforated, 1.5 mm thick, material: Aluminum, height 15 mm, width 35 mm, length 2 m
1201895	NS 35/15 CU UNPERF 2000MM	DIN rail, material: Copper, unperforated, 1.5 mm thick, height 15 mm, width 35 mm, length: 2 m
1201730	NS 35/15 PERF 2000MM	DIN rail, material: Steel, perforated, height 15 mm, width 35 mm, length: 2 m
1201714	NS 35/15 UNPERF 2000MM	DIN rail, material: Steel, unperforated, height 15 mm, width 35 mm, length: 2 m
1201798	NS 35/15-2,3 UNPERF 2000MM	DIN rail, material: Steel, unperforated, 2.3 mm thick, height 15 mm, width 35 mm, length: 2 m

Marking

1007222	SBS 6:UNBEDRUCKT	Marker cards for modular terminal blocks, color: white
1050499	ZB 6:SO/CMS	Zack strip, 10-section, divisible, special printing, marking according to customer requirements

UHK 4-FS/FS(12-2,8-0,8) Order No.: 2017224

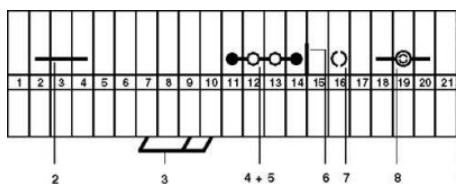
<http://eshop.phoenixcontact.de/phoenix/treeViewClick.do?UID=2017224>

Tools

1205053	SZS 0,6X3,5	Actuation tool, for ST terminal blocks, insulated, also suitable for use as a bladed screwdriver, size: 0.6 x 3.5 x 100 mm, 2-component grip, with non-slip grip
---------	-------------	--

Diagrams/Drawings

Circuit diagram



- 1 = cover
- 2 = fixed bridge
- 3 = insertion bridge
- 4 = isolator bridge bar
- 5 = bridge bar isolator
- 6 = separating plate
- 7 = partition plate
- 8 = test plug socket

UHK 4-FS/FS(12-2,8-0,8) Order No.: 2017224

<http://eshop.phoenixcontact.de/phoenix/treeViewClick.do?UID=2017224>

Address

PHOENIX CONTACT Deutschland GmbH
Flachsmarktstr. 8
32825 Blomberg, Germany
Phone +49 5235 3 12000
Fax +49 5235 3 41200
<http://www.phoenixcontact.de>



© 2011 Phoenix Contact
Technical modifications reserved;