

## Excellent Integrated System Limited

Stocking Distributor

Click to view price, real time Inventory, Delivery & Lifecycle Information:

[Phoenix Contact](#)  
[2757144](#)

For any questions, you can email us directly:

[sales@integrated-circuit.com](mailto:sales@integrated-circuit.com)



Extract from the online catalog


## UEGH 40/1

Order No.: 2757144



<http://eshop.phoenixcontact.de/phoenix/treeViewClick.do?UID=2757144>

Electronic housing, double-level, fully equipped with 6 screw connections per side for one printed circuit board

Commercial data	
GTIN (EAN)	 4 017918 139506
Note	Made-to-order
sales group	F013
Pack	10 pcs.
Customs tariff	85369010
Catalog page information	Page 565 (CC-2009)

### Product notes

WEEE/RoHS-compliant since:  
01/01/2003



<http://www.download.phoenixcontact.com>  
 Please note that the data given here has been taken from the online catalog. For comprehensive information and data, please refer to the user documentation. The General Terms and Conditions of Use apply to Internet downloads.

Technical data	
<b>General</b>	
Housing type	Complete housing
Housing material	Polyamide (PA 6.6)
Color	green

UEGH 40/1 Order No.: 2757144

<http://eshop.phoenixcontact.de/phoenix/treeViewClick.do?UID=2757144>

**Dimensions / positions**

Length	79 mm
Width	40 mm
Number of positions	12
Pitch	5 mm

**Technical data**

Ambient temperature (operation)	-40 °C ... 105 °C
Connection in acc. with standard	CUL
Nominal voltage $U_N$	300 V
Nominal current $I_N$	10 A
AWG/kcmil	30-12
Indicator1	CUL1
Inflammability class acc. to UL 94	V0
Power dissipation at 20°C in the horizontal mounting position	6.1 W 9.1 W

**Connection data**

Conductor cross section solid min.	0.2 mm <sup>2</sup>
Conductor cross section solid max.	4 mm <sup>2</sup>
Conductor cross section stranded min.	0.2 mm <sup>2</sup>
Conductor cross section stranded max.	2.5 mm <sup>2</sup>
Conductor cross section AWG/kcmil min.	24
Conductor cross section AWG/kcmil max	12
Stripping length	8 mm

**Certificates / Approvals**



Certification

CUL, GOST, UL

UEGH 40/1 Order No.: 2757144

<http://eshop.phoenixcontact.de/phoenix/treeViewClick.do?UID=2757144>

---

#### Accessories

Item	Designation	Description
------	-------------	-------------

#### Bridges

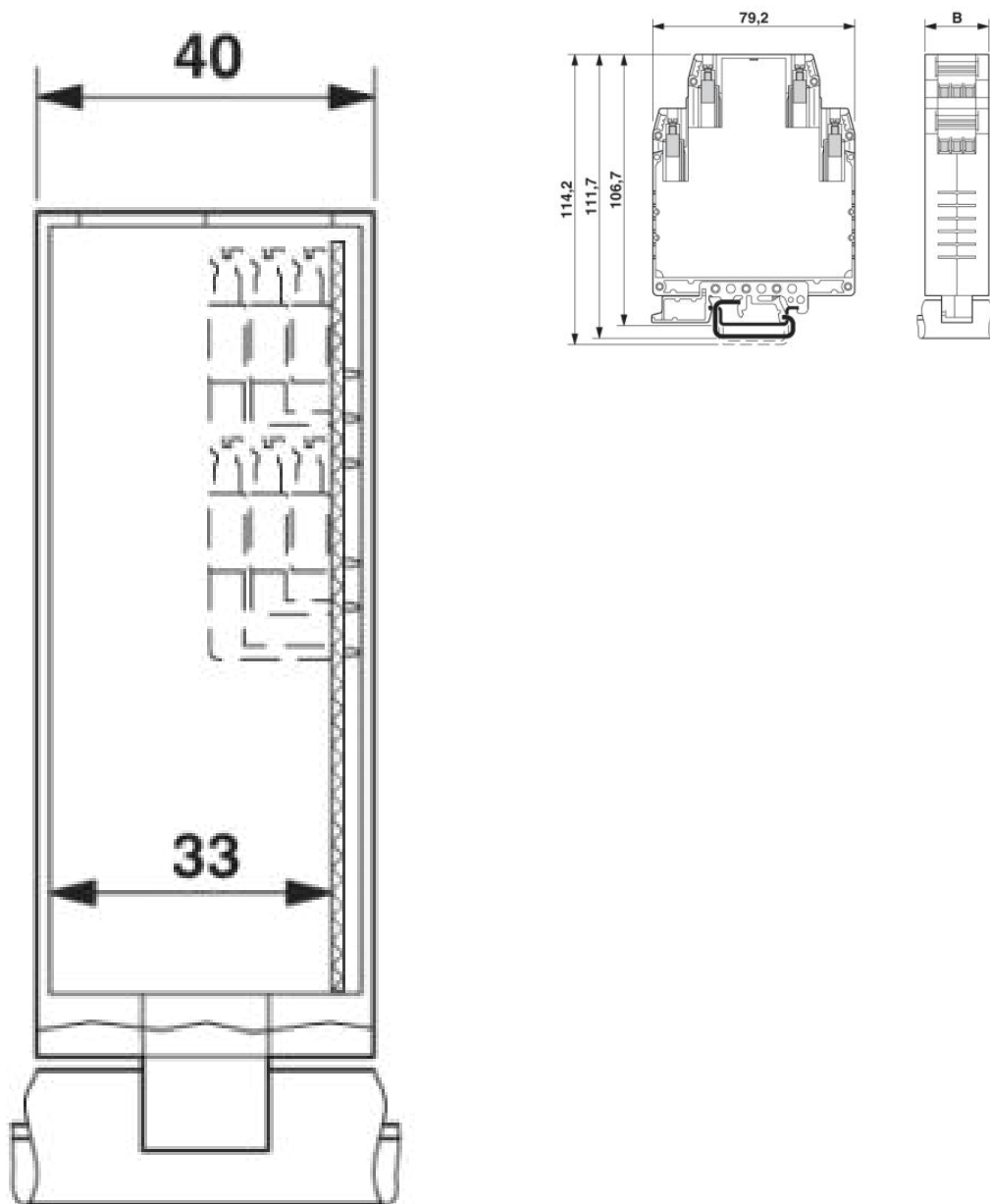
2820929	DB 50- 90 GY	Wire bridge, Color: gray
---------	--------------	--------------------------

UEGH 40/1 Order No.: 2757144

<http://eshop.phoenixcontact.de/phoenix/treeViewClick.do?UID=2757144>

**Diagrams/Drawings**

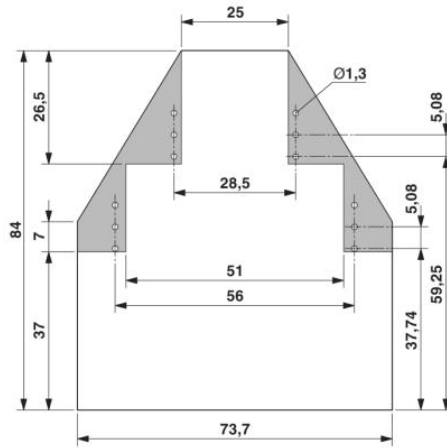
Dimensioned drawing



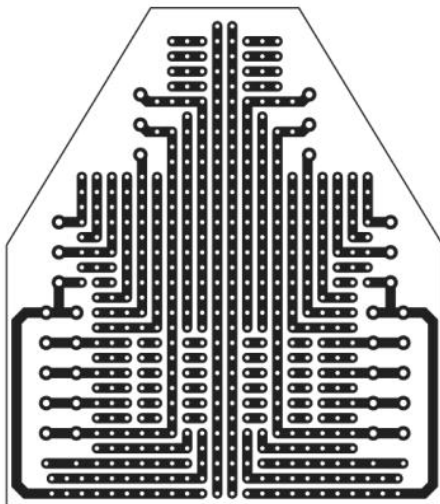
Enlarged internal area, for 1 PCB, 12 positions

UEGH 40/1 Order No.: 2757144

<http://eshop.phoenixcontact.de/phoenix/treeViewClick.do?UID=2757144>



Schematic diagram



UEGH 40/1 Order No.: 2757144

<http://eshop.phoenixcontact.de/phoenix/treeViewClick.do?UID=2757144>

---

**Address**

PHOENIX CONTACT Deutschland GmbH  
Flachmarktstr. 8  
32825 Blomberg, Germany  
Phone +49 5235 3 12000  
Fax +49 5235 3 41200  
<http://www.phoenixcontact.de>



© 2011 Phoenix Contact  
Technical modifications reserved;