

## Excellent Integrated System Limited

Stocking Distributor

Click to view price, real time Inventory, Delivery & Lifecycle Information:

[Phoenix Contact](#)  
[2809186](#)

For any questions, you can email us directly:

[sales@integrated-circuit.com](mailto:sales@integrated-circuit.com)



Extract from the online catalog

## WT-RJ 12-S/FM A/K AP

Order No.: 2809186



<http://eshop.phoenixcontact.de/phoenix/treeViewClick.do?UID=2809186>

RJ12 outlet box, surface-mounted, with surge protection for analog telecommunications interfaces

### Commercial data

GTIN (EAN)	
sales group	J413
Pack	1 pcs.
Customs tariff	85363010
Catalog page information	Page 155 (TT-2009)

### Product notes

WEEE/RoHS-compliant since:  
06/29/2006



<http://www.download.phoenixcontact.com>  
Please note that the data given here has been taken from the online catalog. For comprehensive information and data, please refer to the user documentation. The General Terms and Conditions of Use apply to Internet downloads.

### Technical data

#### General

Housing material	ABS
Color	cream white
Standards for air and creepage distances	VDE 0110-1 IEC 60664-1: 1992-10
Total surge current (8/20) $\mu$ s	10 kA

WT-RJ 12-S/FM A/K AP Order No.: 2809186

<http://eshop.phoenixcontact.de/phoenix/treeViewClick.do?UID=2809186>

Ambient temperature (operation)	-40 °C ... 80 °C
Mounting type	Surface/Wall mounting
Design	Socket for surface mounting
Degree of protection	IP20
Direction of action	Line-Line & Line-Earth Ground
Width	65.00 mm
Height	80.00 mm
Length	39.00 mm

**Protective circuit**

IEC category	C1
	C2
	C3
	D1
VDE requirement class	C1
	C2
	C3
	D1
Maximum continuous voltage $U_C$ (wire-wire)	185 V DC
Nominal current $I_N$	150 mA (25°C)
Operating effective current $I_C$ at $U_C$	$\leq 10 \mu A$
Ground conductor current $I_{PE}$	$\leq 6 \mu A$
Nominal discharge surge current $I_n$ (8/20) $\mu s$ (Core-Core)	2.5 kA
Nominal discharge surge current $I_n$ (8/20) $\mu s$ (Core-Earth)	2.5 kA
Total surge current (8/20) $\mu s$	10 kA
Max. discharge surge current $I_{max}$ (8/20) $\mu s$ maximum (Core-Earth)	2.5 kA
Output voltage limitation at 1 kV/ $\mu s$ (Core-Core) spike	$\leq 240 V$
Output voltage limitation at 1 kV/ $\mu s$ (Core-Earth) spike	$\leq 700 V$
Output voltage limitation at 1 kV/ $\mu s$ (Core-Core) static	$\leq 220 V$
Output voltage limitation at 1 kV/ $\mu s$ (Core-Earth) static	$\leq 700 V$
Residual voltage at $I_n$ , (conductor-conductor)	$\leq 60 V$

WT-RJ 12-S/FM A/K AP Order No.: 2809186

<http://eshop.phoenixcontact.de/phoenix/treeViewClick.do?UID=2809186>

Residual voltage at $I_n$ , (conductor-ground)	$\leq 60$ V
Protection level $U_p$ (Core-Core)	$\leq 240$ V
Protection level $U_p$ (Core-Earth)	$\leq 700$ V
Response time $t_A$ (Core-Core)	$\leq 10$ ns
Response time $t_A$ (Core-Earth)	$\leq 100$ ns
Input attenuation $a_E$ , sym.	0.1 dB ( $\leq 400$ kHz)
Cut-off frequency $f_g$ (3 dB), sym. in 600 Ohm system	Typ. 1.7 MHz
Inductivity in series	39 $\mu$ H $\pm 10$ %
Resistance in series	1 $\Omega$
Short-circuit current self-quenching	150 mA
Surge carrying capacity in acc. with IEC 61643-21 (Core-Core)	C1 (1 kV / 500 A)
	C2 (4 kV/2 kA)
	C3 (25 A)
Surge carrying capacity in acc. with IEC 61643-21 (Core-Earth)	C1 (1 kV / 500 A)
	C2 (4 kV / 2 kA)
	C3 (100 A)
	D1 (500 A)

**Connection data**

Type of connection	Screw connection & RJ12
Connection type IN	Screw terminal blocks
Connection type OUT	RJ12 female connector
Screw thread	M2/M3
Stripping length	5 mm
	6 mm
Conductor cross section stranded min.	0.1 mm <sup>2</sup>
Conductor cross section stranded max.	1 mm <sup>2</sup>
Conductor cross section solid min.	0.14 mm <sup>2</sup>
Conductor cross section solid max.	1.5 mm <sup>2</sup>
Conductor cross section AWG/kcmil min.	26
Conductor cross section AWG/kcmil max	16

**Connection, equipotential bonding**

Conductor cross section stranded min.	0.15 mm <sup>2</sup>
---------------------------------------	----------------------

WT-RJ 12-S/FM A/K AP Order No.: 2809186  
<http://eshop.phoenixcontact.de/phoenix/treeViewClick.do?UID=2809186>

Conductor cross section stranded max.	1.5 mm <sup>2</sup>
Conductor cross section solid min.	0.14 mm <sup>2</sup>
Conductor cross section solid max.	1.5 mm <sup>2</sup>
Conductor cross section AWG/kcmil min.	26
Conductor cross section AWG/kcmil max	16

**Connection, protective circuit**

Standards/regulations	IEC 61643-21
-----------------------	--------------

**Certificates / Approvals**

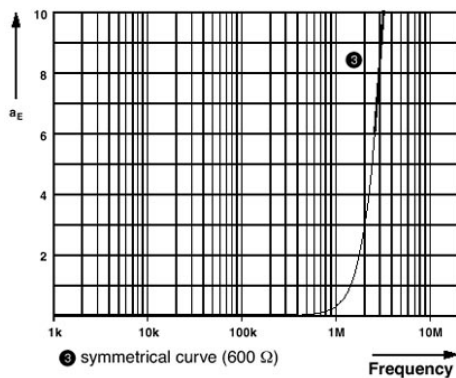


Certification

BZT, GOST

**Diagrams/Drawings**

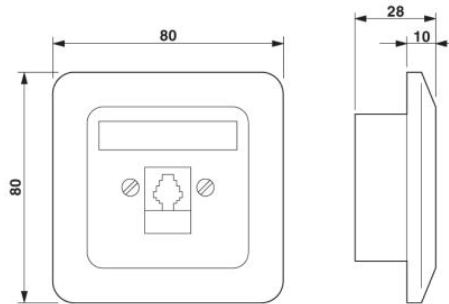
Diagram



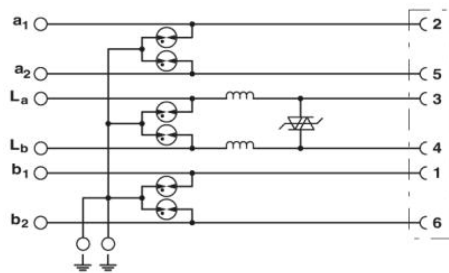
WT-RJ 12-S/FM A/K AP Order No.: 2809186

<http://eshop.phoenixcontact.de/phoenix/treeViewClick.do?UID=2809186>

Dimensioned drawing



Circuit diagram



WT-RJ 12-S/FM A/K AP Order No.: 2809186

<http://eshop.phoenixcontact.de/phoenix/treeViewClick.do?UID=2809186>

---

#### Address

PHOENIX CONTACT Deutschland GmbH  
Flachsmarktstr. 8  
32825 Blomberg, Germany  
Phone +49 5235 3 12000  
Fax +49 5235 3 41200  
<http://www.phoenixcontact.de>



© 2011 Phoenix Contact  
Technical modifications reserved;