

## **Excellent Integrated System Limited**

Stocking Distributor

Click to view price, real time Inventory, Delivery & Lifecycle Information:

[Phoenix Contact](#)  
[2293679](#)

For any questions, you can email us directly:  
[sales@integrated-circuit.com](mailto:sales@integrated-circuit.com)

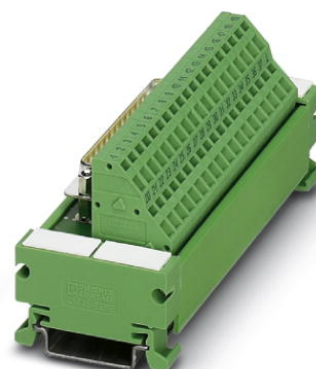


Extract from the online catalog

## UM 45-D15SUB/B/ZFKDS

Order No.: 2293679

The illustration shows version UM 45-D 37SUB/S/ZFKDS



<http://eshop.phoenixcontact.de/phoenix/treeViewClick.do?UID=2293679>

VARIOFACE module, with spring-cage connection and D-Subminiature socket strip, for mounting on NS 35/7.5, 15-pos.



### Commercial data

GTIN (EAN)	
sales group	I011
Pack	1 pcs.
Customs tariff	85369010
Catalog page information	Page 286 (IF-2009)

### Product notes

WEEE/RoHS-compliant since:  
09/04/2006



<http://www.download.phoenixcontact.com>  
Please note that the data given here has been taken from the online catalog. For comprehensive information and data, please refer to the user documentation. The General Terms and Conditions of Use apply to Internet downloads.

### Technical data

#### General data

Nominal voltage $U_N$	125 V AC/DC
Max. current carrying capacity per branch	2.5 A 1.5 A (with even load on all branches)
Number of positions	15

UM 45-D15SUB/B/ZFKDS Order No.: 2293679  
<http://eshop.phoenixcontact.de/phoenix/treeViewClick.do?UID=2293679>

Width	65 mm
Height	45 mm
Depth	50 mm
Status display	No
Ambient temperature (operation)	-20 °C ... 50 °C
Ambient temperature (storage/transport)	-20 °C ... 70 °C
Test voltage	800 V (50 Hz, 1 min.)
Mounting position	Any
Standards/regulations	IEC 60664
	DIN EN 50178
	IEC 62103
Pollution degree	2
Surge voltage category	II

**Connection data**

Connection 1	PCB connection
Connection in acc. with standard	IEC / EN
Type of connection	Spring-cage connection
Conductor cross section solid min.	0.2 mm <sup>2</sup>
Conductor cross section solid max.	2.5 mm <sup>2</sup>
Conductor cross section stranded min.	0.2 mm <sup>2</sup>
Conductor cross section stranded max.	1.5 mm <sup>2</sup>
Conductor cross section AWG/kcmil min.	24
Conductor cross section AWG/kcmil max	14
Stripping length	8 mm
Connection 2	D-SUB connection
Type of connection	Pluggable
Number of positions	15

**Certificates / Approvals**



Certification GOST

UM 45-D15SUB/B/ZFKDS Order No.: 2293679  
<http://eshop.phoenixcontact.de/phoenix/treeViewClick.do?UID=2293679>

**Accessories**

Item	Designation	Description
<b>Cable/conductor</b>		
2302434	CABLE D-SUB-S-S-S/.../.../...	Shielded round cable, assembled with two D-SUB male connectors, variable cable length
2302340	CABLE D-SUB-S/.../.../...	Shielded round cable, assembled with one D-SUB male and one female connector, variable cable length
2926438	CABLE-D-15SUB/M/OE/0,25/S/0,5M	Shielded cable with a 15-pos. D-SUB pin strip and one open end. The individual wires are labeled 1 to 15 and fitted with ferrules. The braided shield is routed to a separate cable end. Cable length: 0.5 m.
2926441	CABLE-D-15SUB/M/OE/0,25/S/1,0M	Shielded cable with a 15-pos. D-SUB pin strip and one open end. The individual wires are labeled 1 to 15 and fitted with ferrules. The braided shield is routed to a separate cable end. Cable length: 1 m.
2926454	CABLE-D-15SUB/M/OE/0,25/S/1,5M	Shielded cable with a 15-pos. D-SUB pin strip and one open end. The individual wires are labeled 1 to 15 and fitted with ferrules. The braided shield is routed to a separate cable end. Cable length: 1.5 m.
2926467	CABLE-D-15SUB/M/OE/0,25/S/2,0M	Shielded cable with a 15-pos. D-SUB pin strip and one open end. The individual wires are labeled 1 to 15 and fitted with ferrules. The braided shield is routed to a separate cable end. Cable length: 2 m.
2926470	CABLE-D-15SUB/M/OE/0,25/S/3,0M	Shielded cable with a 15-pos. D-SUB pin strip and one open end. The individual wires are labeled 1 to 15 and fitted with ferrules. The braided shield is routed to a separate cable end. Cable length: 3 m.
2926483	CABLE-D-15SUB/M/OE/0,25/S/4,0M	Shielded cable with a 15-pos. D-SUB pin strip and one open end. The individual wires are labeled 1 to 15 and fitted with ferrules. The braided shield is routed to a separate cable end. Cable length: 4 m.
2926496	CABLE-D-15SUB/M/OE/0,25/S/6,0M	Shielded cable with a 15-pos. D-SUB pin strip and one open end. The individual wires are labeled 1 to 15 and fitted with ferrules. The braided shield is routed to a separate cable end. Cable length: 6 m.
2302052	CABLE-D15SUB/B/S/ 50/ KONFEK/S	Round shielded cable set, with 15-pos. D-SUB female and male connectors, cable length: 0.5 m
2302065	CABLE-D15SUB/B/S/100/ KONFEK/S	Round shielded cable set, with 15-pos. D-SUB female and male connectors, cable length: 1 m
2302078	CABLE-D15SUB/B/S/150/ KONFEK/S	Round shielded cable set, with 15-pos. D-SUB female and male connectors, cable length: 1.5 m
2302081	CABLE-D15SUB/B/S/200/ KONFEK/S	Round shielded cable set, with 15-pos. D-SUB female and male connectors, cable length: 2 m
2302094	CABLE-D15SUB/B/S/300/ KONFEK/S	Round shielded cable set, with 15-pos. D-SUB female and male connectors, cable length: 3 m

UM 45-D15SUB/B/ZFKDS Order No.: 2293679  
<http://eshop.phoenixcontact.de/phoenix/treeViewClick.do?UID=2293679>

2302104	CABLE-D15SUB/B/S/400/ KONFEK/S	Round shielded cable set, with 15-pos. D-SUB female and male connectors, cable length: 4 m
2302117	CABLE-D15SUB/B/S/600/ KONFEK/S	Round shielded cable set, with 15-pos. D-SUB female and male connectors, cable length: 6 m

**General**

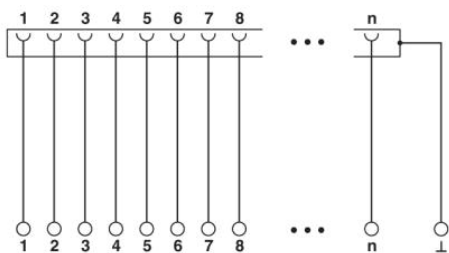
2900910	CABLE-D-15SUB-M-OE-0,25-S/...	Shielded cable with a 15-pos. D-SUB pin strip and one open end. The individual wires are labeled 1 to 15 and fitted with ferrules. The braided shield is routed to a separate cable end. Cable length: variable.
---------	-------------------------------	--

**Tools**

1204504	SZF 0-0,4X2,5	Actuation tool, for ST terminal blocks, also suitable for use as a bladed screwdriver, size: 0.4 x 2.5 x 75 mm, 2-component grip, with non-slip grip
---------	---------------	--

**Diagrams/Drawings**

Circuit diagram



UM 45-D15SUB/B/ZFKDS Order No.: 2293679

<http://eshop.phoenixcontact.de/phoenix/treeViewClick.do?UID=2293679>

---

#### Address

PHOENIX CONTACT Deutschland GmbH  
Flachsmarktstr. 8  
32825 Blomberg, Germany  
Phone +49 5235 3 12000  
Fax +49 5235 3 41200  
<http://www.phoenixcontact.de>



© 2011 Phoenix Contact  
Technical modifications reserved;