

## **Excellent Integrated System Limited**

Stocking Distributor

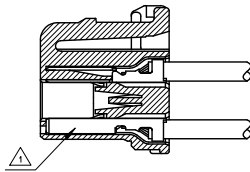
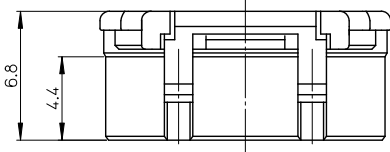
Click to view price, real time Inventory, Delivery & Lifecycle Information:

[Molex Connector Corporation](#)  
[5031103000](#)

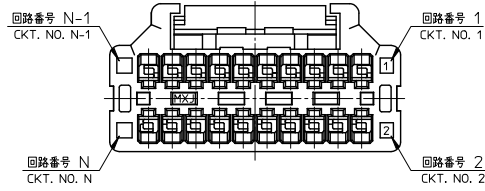
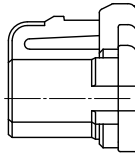
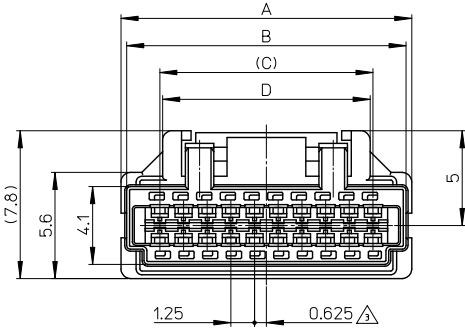
For any questions, you can email us directly:

[sales@integrated-circuit.com](mailto:sales@integrated-circuit.com)

10 9 8 7 6 5 4 3 2 1

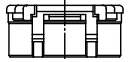


ターミナル装着図  
TERMINAL ASSEMBLY DRAWING

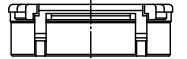


NOTES

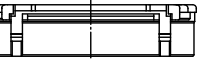
- △ 適合ターミナル: 501930-\*\*\*\*  
APPLICABLE TERMINAL: 501930-\*\*\*\*
- 2. 嵌合相手: 501931-\*\*\*\*, 502046-\*\*\*\*  
MATE WITH: 501931-\*\*\*\*, 502046-\*\*\*\*
- △ 極数/2=偶数に適用。  
APPLY FOR CKT. SIZE / 2 = EVEN.
- 4. アプリケーション仕様書 (コネクタ取扱説明書)  
AS-503110-001, AS-503110-002  
APPLICATION SPECIFICATIONS (CONNECTOR MANUAL)  
AS-503110-001, AS-503110-002
- 5. 製品仕様書: PS-501931-002  
Product specification: PS-501931-002
- 6. ELV 及び RoHS 適合品  
ELV AND RoHS COMPLIANT



20ckt.



30ckt.

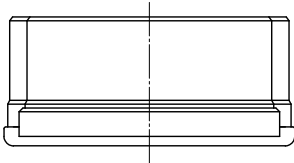


40ckt.

極数の種類 (正面図)

KIND OF CKT. NO. (FRONT VIEW)

23.45	23.75	27.25	27.85	503110-4000	40
17.2	17.5	21	21.6	503110-3000	30
10.95	11.25	14.75	15.35	503110-2000	20
				PLASTIC BAG	極数
				オーダー番号ORDER No.	CIRCUITS



REVISED EC NO. J2012-0332 DRAWN BY CHIKIDAKAWA APPR. Y. ITO REV	GENERAL TOLERANCES (UNLESS SPECIFIED)		DIMENSION STYLE MM ONLY		SCALE 5:1	DESIGN UNITS METRIC	THIRD ANGLE PROJECTION
	10 UNDER	± 0.2	DRAWN BY N. NISHI	DATE 2007/11/16	TITLE 1.25 W/B CONN.DUAL PLUG HOUSING MOLEX INCORPORATED DOCUMENT NO. SD-503110-001 SHEET NO. 1 OF 1		
	10 OVER 30 UNDER	± 0.25	CHECKED BY K. ASAKAWA	DATE 2007/11/16			
	30 OVER	± 0.3	APPROVED BY Y. ITO	DATE 2007/11/16			
ANGULAR	± 3 °	MATERIAL NO. SEE TABLE					
DRAFT WHERE APPLICABLE MUST REMAIN WITHIN DIMENSIONS		THIS DRAWING CONTAINS INFORMATION THAT IS PROPRIETARY TO MOLEX INCORPORATED AND SHOULD NOT BE USED WITHOUT WRITTEN PERMISSION					

部品 PART	材質 MATERIAL
ハウジング HOUSING	ポリエステル(PBT) UL94V-0 色:白 POLYESTER(PBT) UL94V-0 COLOR:WHITE