

## Excellent Integrated System Limited

Stocking Distributor

Click to view price, real time Inventory, Delivery & Lifecycle Information:

[Hammond Manufacturing](#)  
[CN4SB103](#)

For any questions, you can email us directly:

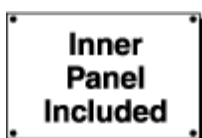
[sales@integrated-circuit.com](mailto:sales@integrated-circuit.com)



*Quality Products. Service Excellence.*

## **Type 4/3R Mild Steel Splitter Box** *CN4SB Series*

**Hinge Door with Quarter Turn**



### **Application**

- The splitter boxes are designed for distribution of up to 600 A (max) service using either 3 or 4 wires.

### **Standards**

- CSA Type 3R, 12, 4
- Complies with
  - IEC 60529, IP66

### **Construction**

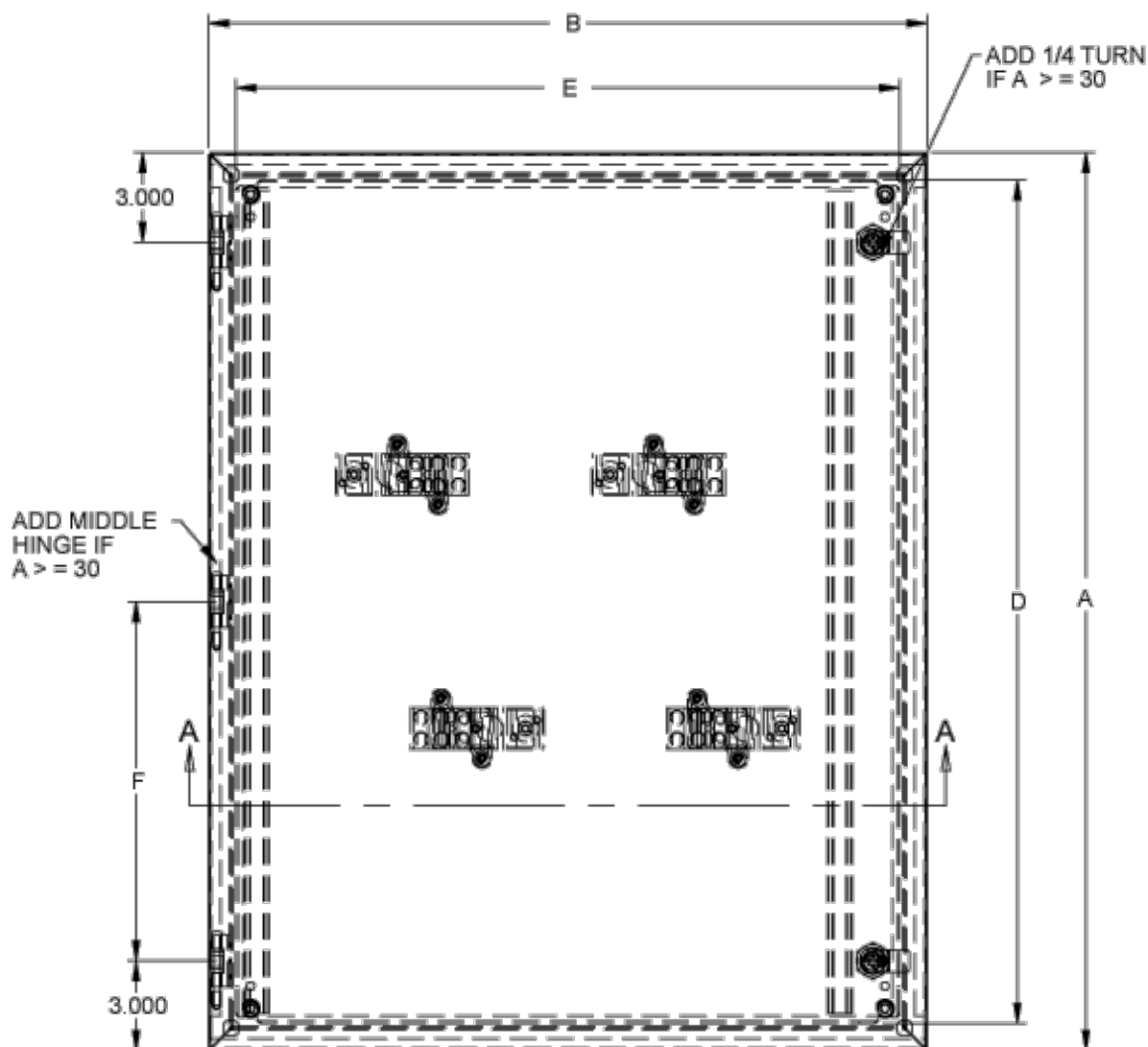
- Formed 14 and 16 gauge steel.
- Factory installed splitter blocks.
- Smooth, continuously welded seams ground smooth.
- Door stiffeners are provided where required for increased strength and rigidity - designed to also permit additional mounting options.
- Formed lip on enclosure to exclude flowing liquids and contaminants.
- Door latches feature the added safety of quarter turn slot requiring use of tool for opening.
- Doors may be easily removed for modifications and are interchangeable.
- Seamless poured-in place gasket.
- Collar studs provided for mounting inner panel.
- Includes hardware kit with panel mounting nuts and sealing washers for wall mounting holes.
- Hinges are constructed from 304 stainless steel.
- Hinge pins are stainless steel.
- Inner panel is included.

### **Finish**

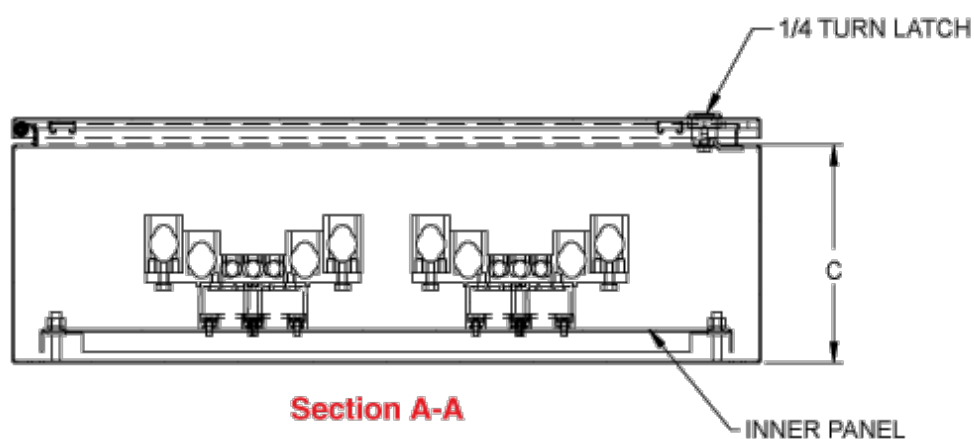
- Cover and enclosure are finished in recoatable smooth ANSI 61 gray powder coating.
- Inner panel is finished in white powder coating.

### **Accessories**

- Quarter Turn Inserts and Keys
- Rear Hole Plugs
- Quarter Turn Assemblies
- Padlock Adaptor
- Grounding Kits
- Mounting Foot Kit
- Replacement Hinge Pins
- Touch-Up Spray Paint
- Splitter Blocks



**Front View**



**Section A-A**

Part Number		Door/Body Gauge	Optional Grounding Kit	CU/AL Amps	Overall Dimensions						# of Latches	# of Hinges
3 Wire	4 Wire				A	B	C	D	E	F		
CN4SB73	CN4SB74	16	CGK125	70/70	12.00	10.00	5.00	10.17	8.17	N/A	1	2
CN4SB103	CN4SB104	16	CGK125	125/120	15.00	10.00	5.00	13.17	8.17	N/A	1	2
CN4SB203	CN4SB204	16	CGK225	225/225	18.00	12.00	5.00	16.17	10.17	N/A	1	2
CN4SB403	CN4SB404	16	CGK400	400/340	24.00	17.00	6.00	22.17	15.17	N/A	1	2



## Distributor of Hammond Manufacturing: Excellent Integrated System Limited

Datasheet of CN4SB103 - BOX STEEL GRAY 15"L X 10"W

Contact us: [sales@integrated-circuit.com](mailto:sales@integrated-circuit.com) Website: [www.integrated-circuit.com](http://www.integrated-circuit.com)

Part Number		Door/Body Gauge	Optional Grounding Kit	CU/AL Amps	Overall Dimensions						# of	
3 Wire	4 Wire				A	B	C	D	E	F	Latches	Hinges
CN4SB603*	CN4SB604*	14	CGK600	600/574	30.00	24.00	7.00	28.17	22.17	12.00	2	3

\* 14 gauge steel

*Data subject to change without notice*

© 2016. Hammond Manufacturing Ltd. All rights reserved.