

Excellent Integrated System Limited

Stocking Distributor

Click to view price, real time Inventory, Delivery & Lifecycle Information:

[Hammond Manufacturing](#)
[R130-124-000](#)

For any questions, you can email us directly:

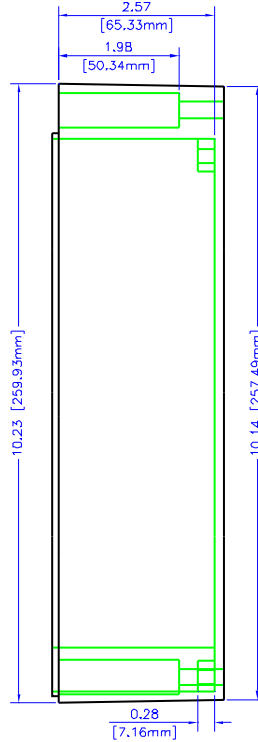
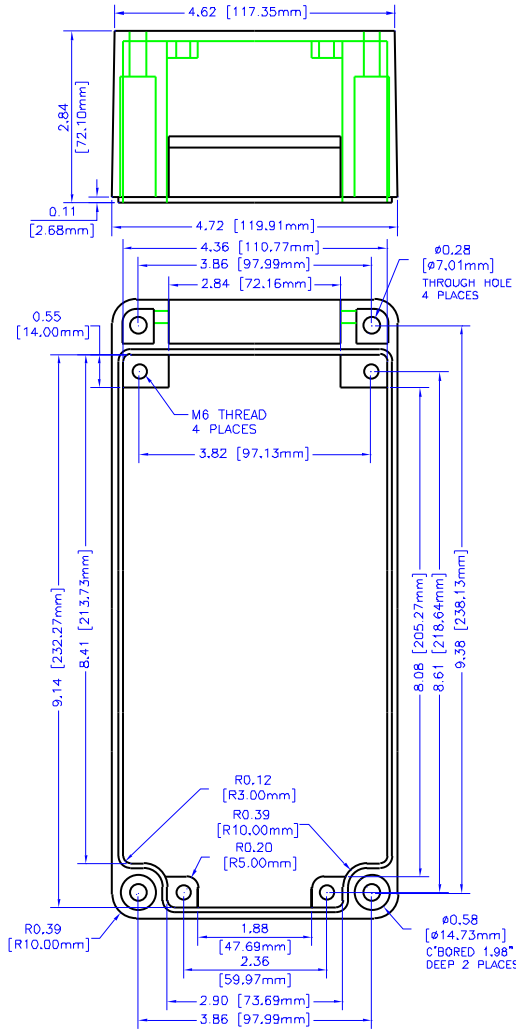
sales@integrated-circuit.com

REV	DESCRIPTION	DATE

NOTES

MATERIAL TWO PIECE MOLDED FIBERGLASS REINFORCED POLYESTER CONSTRUCTION. COMES WITH HINGED COVER WINDOW. RECESSED NEOPRENE GASKET WITH TONGUE AND GROVE CONSTRUCTION. THREADED STAINLESS STEEL INSERTS PROVIDED FOR INTERNAL MOUNTING.

COLORS LIGHT GRAY (RAL 7032)



BOX VIEW

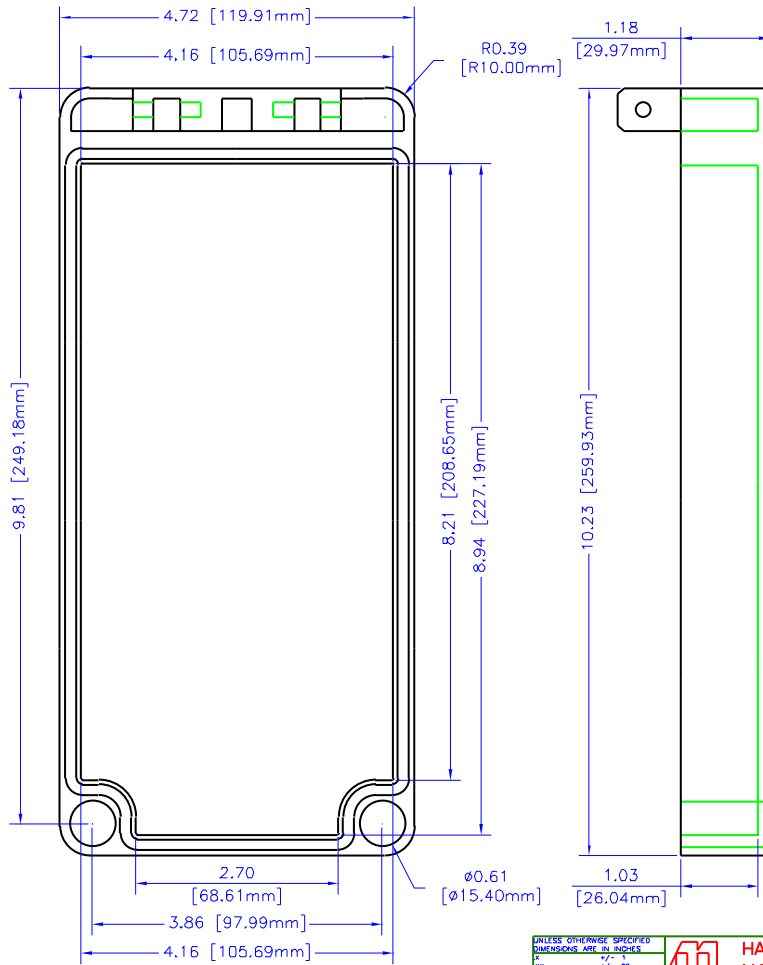
UNLESS OTHERWISE SPECIFIED
DIMENSIONS ARE IN INCHES
FRACTIONS 1/16 1/8 1/4 3/8 1/2 5/8 3/4 7/8 1
DECIMALS 0.0005 0.001 0.002 0.005 0.010 0.015 0.030 0.060 0.125
ANGLES 15 30 45 60 75 90 105 120 135 150 165 180
DIMENSIONS UNLESS OTHERWISE SPECIFIED
ARE IN INCHES. IF IN MILLIMETERS, DIMENSIONS SHALL BE TO NEAREST 0.1MM.
DIMENSIONS ARE NOT TO BE USED TO
REPRODUCE THIS DRAWING WITHOUT THE
PERMISSION FROM HAMMOND MANUFACTURING



**HAMMOND
MANUFACTURING**

WEB: WWW.HAMMONDMFG.COM

TITLE	
HAMMOND R130 SERIES POLYESTER ENCLOSURE	
DRAWN BY	MJM
DATE	12/08/01
SCALE	1 OF 2
PART NUMBER	R130-124-000



LID VIEW

UNLESS OTHERWISE SPECIFIED
 DIMENSIONS ARE IN INCHES
 FIN +/- .02
 HX +/- .02
 FXX +/- .015
 SURF +/- .005
 HOLES +/- .S DEG



**HAMMOND
 MANUFACTURING**

WEB: WWW.HAMMONDMFG.COM

TITLE		HAMMOND R130 SERIES POLYESTER ENCLOSURE	
DESIGN BY	MJM	DATE	12/08/01
SCALE		PAGE	2 OF 2
PART NUMBER		R130-124-000	