

Excellent Integrated System Limited

Stocking Distributor

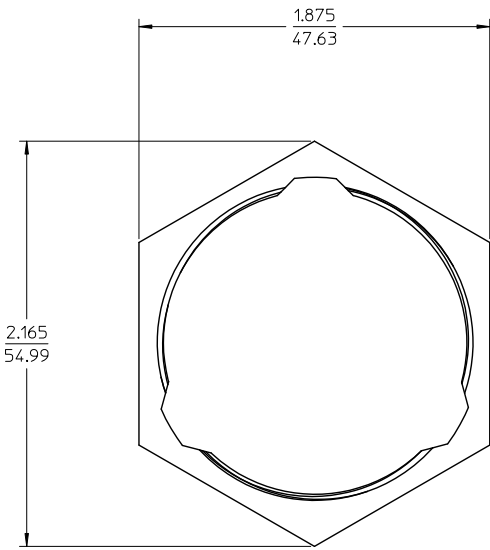
Click to view price, real time Inventory, Delivery & Lifecycle Information:

[Molex Connector Corporation](#)
[0845060012](#)

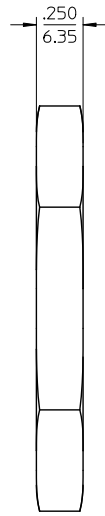
For any questions, you can email us directly:

sales@integrated-circuit.com

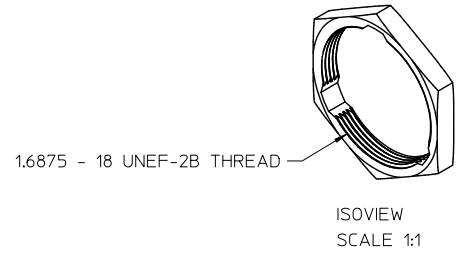
10 9 8 7 6 5 4 3 2 1



SCALE 2:1



SCALE 2:1



NOTE(S):

1. MATERIAL: POLYESTER (PBT)
COLOR: BLACK
UL FLAMMABILITY RATING: UL94 V-0
2. USE WITH MOLEX XRC RECEPTACLE CONNECTORS SERIES 84506 AND 84511.
3. RECOMMENDED TORQUE: 65-75 IN-LB (7.3-8.5 N-M)
4. MATERIAL IS ROHS COMPLIANT.

ADD TORQUE EC NO: IFC2013-0642 DRAWN BY: 2012/10/30 CHKD BY: 2013/02/15 APPR'D BY: 2013/02/19	QUALITY SYMBOLS	GENERAL TOLERANCES (UNLESS SPECIFIED)		DIMENSION STYLE		SCALE	DESIGN UNITS	THIRD ANGLE PROJECTION	
	▽=0	mm	INCH	IN/MM		1:1	INCH	☉	
	▽=0	4 PLACES ±---	±---	DRAWN BY: WLEUNG		DATE: 2008/12/16	TITLE: PANEL HEX NUT, PIN OR SOCKET RECEPTACLE 24 SHELL		
	▽=0	3 PLACES ±---	±.015	CHECKED BY: WLEUNG		DATE: 2008/12/16	molex		
REV	DESCRIPTION	1 PLACE ±---	±---	APPROVED BY: RDEROSS		DATE: 2008/12/16	DOCUMENT NO. SD-84506-012		SHEET NO. 1 OF 1
		0 PLACE ±---	±---	MATERIAL NO. 845060012		THIS DRAWING CONTAINS INFORMATION THAT IS PROPRIETARY TO MOLEX INCORPORATED AND SHOULD NOT BE USED WITHOUT WRITTEN PERMISSION			
		ANGULAR ± 2 °							
		DRAFT WHERE APPLICABLE MUST REMAIN WITHIN DIMENSIONS							

9 8 7 6 5 4 3 2 1