



**Distributor of On-Shore Technology, Inc.: Excellent Integrated System Limited**  
Datasheet of OSTYK44A02030 - Connector Barrier Block Strip 2 Circuit 0.374" (9.50mm)

Contact us: [sales@integrated-circuit.com](mailto:sales@integrated-circuit.com) Website: [www.integrated-circuit.com](http://www.integrated-circuit.com)

---

## **Excellent Integrated System Limited**

Stocking Distributor

Click to view price, real time Inventory, Delivery & Lifecycle Information:

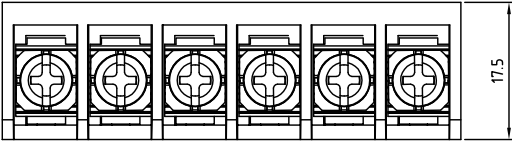
[On-Shore Technology, Inc.](#)  
[OSTYK44A02030](#)

For any questions, you can email us directly:

[sales@integrated-circuit.com](mailto:sales@integrated-circuit.com)

SIGN	DATE	DESCRIPTION	APPROVER

THIS IS CAD DRAWING, DO NOT REVISE MANUALLY!!!



**SPECIFICATIONS**

RATED VOLTAGE & CURRENT: 300 V, 25 A  
 WITHSTANDING VOLTAGE: AC 2000 V/Min  
 INSULATION RESISTANCE: 1000 MΩ OR MORE AT DC 500 V  
 TEMPERATURE RANGE: -40 °C ~ 105 °C  
 SCREW TORQUE VALUE: 10.54 Lb-In.  
 WIRE RANGE: 22 - 14 AWG  
 1) MOLDED PARTS: THERMOPLASTIC, UL 94 V-0 BLACK  
 2) TERMINAL: BRASS, 0.8t, Tin PLATED  
 3) TERMINAL SCREWS: STEEL, Ni PLATED, M3.5  
 APPROVAL: (S) PENDING

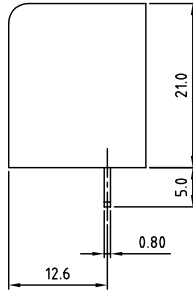
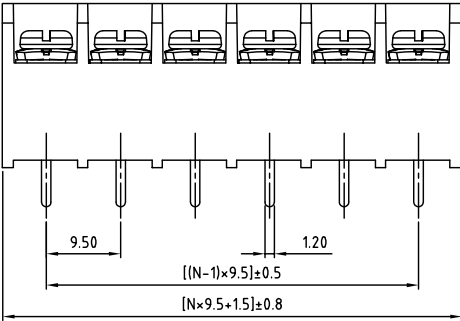
RoHS Compliant

PART NUMBER:

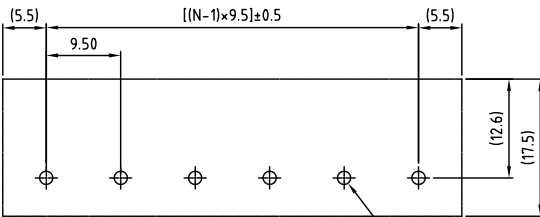
**OSTYK44AXX030**

NO. OF POLES

- 02: 2 POLES
- 03: 3 POLES
- 04: 4 POLES
- ⋮
- 30: 30 POLES



N=Number of poles



P.C.B Layout

THESE DRAWINGS AND SPECIFICATIONS ARE THE PROPERTY OF ON-SHORE TECHNOLOGY, INC. AND SHALL NOT BE REPRODUCED, COPIED OR USED IN ANY MANNER WITHOUT THE PRIOR WRITTEN CONSENT OF ON-SHORE TECHNOLOGY, INC.

<b>OST</b>		<b>ON-SHORE TECHNOLOGY, INC.</b>				
TITLE	OSTYK-44A Series					
PART NO.	OSTYK44AXX030	DWG NO.	OSTYK44AXX030.DWG			
APPROVED	CHECKED	DESIGNED	DRAWN	CUST NO.	Tolerance	
Shi Jun 2007.07.18	Seamus 2007.07.18	LUCY 2007.7.18	LUCY 2007.7.18		X: ±0.50 X.X ±0.30 X.XX ±0.10 X* ±1*	
				UNIT: mm		
				SCALE: NONE		
SHEET: 01/01				REV: B		