



Distributor of On-Shore Technology, Inc.: Excellent Integrated System Limited
Datasheet of OSTYK50502130 - Connector Barrier Block Strip 2 Circuit 0.374" (9.50mm)

Contact us: sales@integrated-circuit.com Website: www.integrated-circuit.com

Excellent Integrated System Limited

Stocking Distributor

Click to view price, real time Inventory, Delivery & Lifecycle Information:

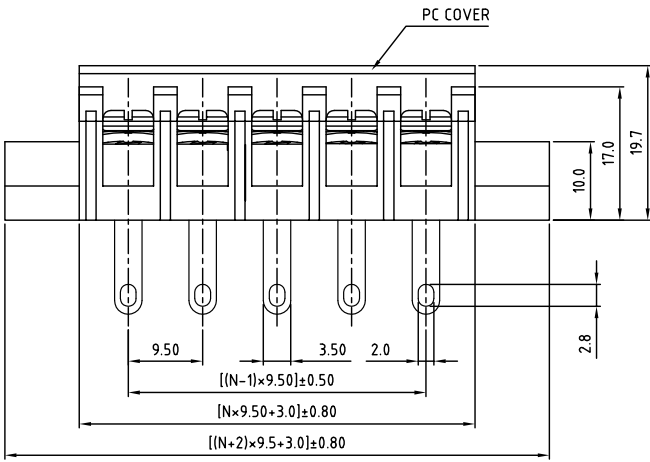
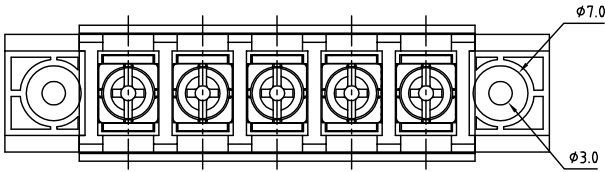
[On-Shore Technology, Inc.](#)
[OSTYK50502130](#)

For any questions, you can email us directly:

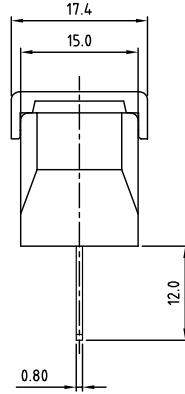
sales@integrated-circuit.com

SIGN	DATE	DESCRIPTION	APPROVER

THIS IS CAD DRAWING, DO NOT REVISE MANUALLY!!!



N=Number of poles



SPECIFICATIONS

- VOLTAGE & CURRENT: 300 V, 20 A
 WITHSTANDING VOLTAGE: AC 2000 V/Min
 INSULATION RESISTANCE: 1000 MΩ OR MORE AT DC 500 V
 TEMPERATURE RANGE: -40 °C ~ +105 °C
 SCREW TORQUE VALUE: 12 Lb-In.
 WIRE RANGE: 22 - 12AWG
 1) MOLDED PARTS: THERMOPLASTIC, UL 94 V-0 BLACK
 2) TERMINAL: BRASS, 0.8t, Tin PLATED
 3) TERMINAL SCREWS: STEEL, Ni PLATED, M3.5
 4) COVER MATERIAL: PC
 APPROVAL: us

RoHS Compliant

PART NUMBER: **OSTYK505XX130**

NO. OF POLES
 02: 2 POLES
 03: 3 POLES
 04: 4 POLES

30: 30 POLES

THESE DRAWINGS AND SPECIFICATIONS ARE THE PROPERTY OF ON-SHORE TECHNOLOGY, INC. AND SHALL NOT BE REPRODUCED, COPIED OR USED IN ANY MANNER WITHOUT THE PRIOR WRITTEN CONSENT OF ON-SHORE TECHNOLOGY, INC.

OST ON-SHORE TECHNOLOGY, INC.	
TITLE	OSTYK-505 W/Flange&With Cover Series
PART NO.	OSTYK505XX130
DWG NO.	OSTYK505XX130.DWG
APPROVED	CHECKED DESIGNED DRAWN CUST NO.
Shi Jun 2007.07.18	Seamus 2007.07.18 LUCY 2007.7.18 LUCY 2007.7.18
UNIT: mm SCALE: NONE SHEET: 01/01 REV.: B	
Tolerance X: ±0.50 X.X ±0.30 X.XX ±0.10 X* ±1*	